

Measuring the CO2 footprint of European Households: A comprehensive approach



THE CARBON FOOTPRINT OF A HOUSEHOLD

includes the **combustion of heating** and the **use of private car**, as well as the **emissions generated** by **producing all the goods and services it consumes**.

HOUSEHOLDS TOTAL CO2 FOOTPRINT: DISAGGREGATION BETWEEN DIRECT AND INDIRECT EMISSIONS. AVERAGE FOR THE ANALYZED COUNTRIES, 2018.

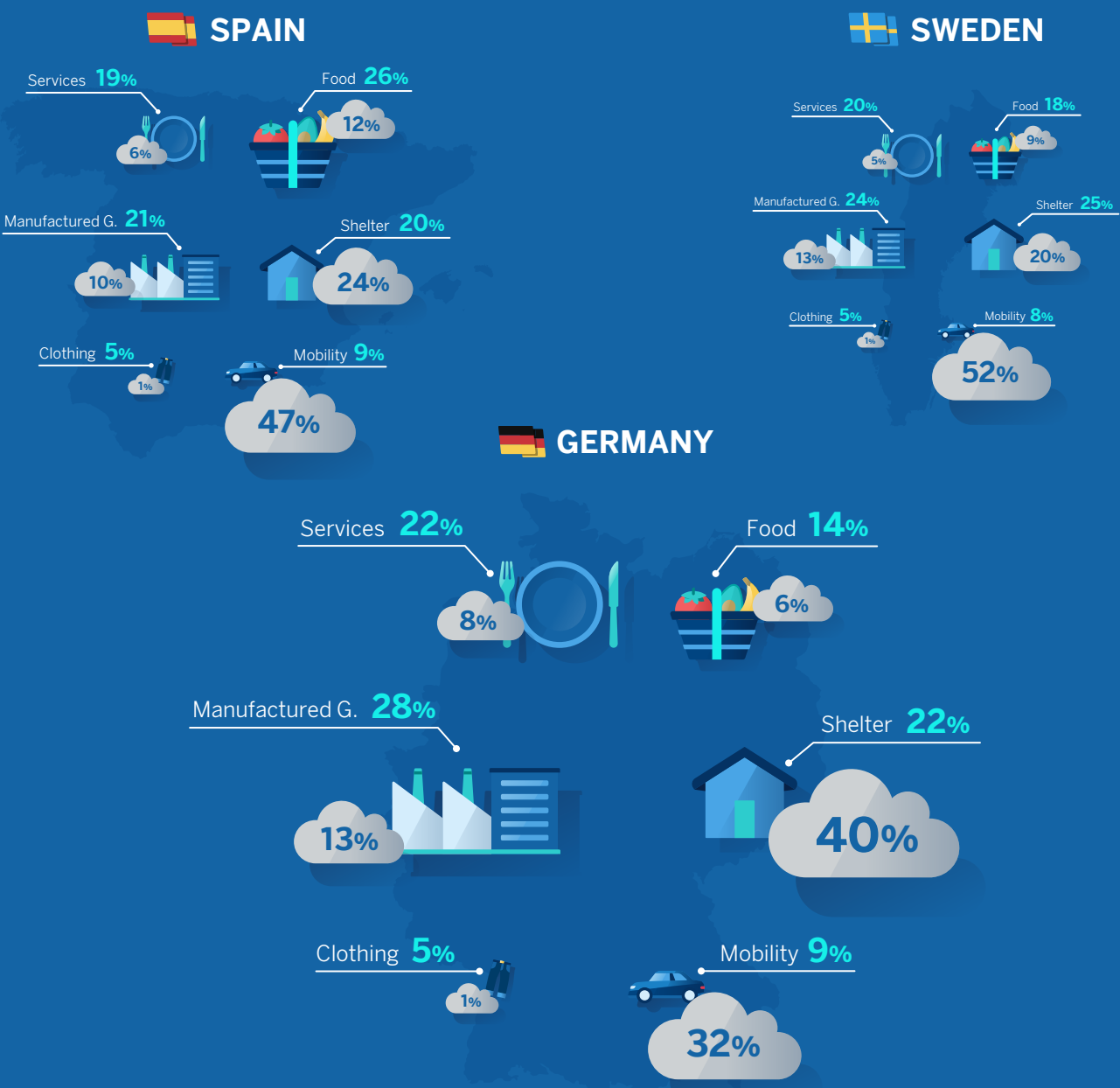


THE CO2 FOOTPRINT OF EUROPEAN HOUSEHOLDS

is **diverse in size and structure**, as a function of their consumption, determined by their **income level and lifestyle** but...

...also by the **greater or lesser intensity of emissions** of the sectors that **satisfy the demand for the goods and services they consumed**.

HOUSEHOLDS CO2 FOOTPRINT (CLOUDS) AND CONSUMPTION BASKET (FIGURES) BY COICOP CATEGORY. %, 2018. RELATIVE SIZE ACCORDING TO THE CO2 FOOTPRINT PER CAPITA



Source: BBVA Research.



Household emission reduction policies must combine nudges differentiated by **income levels and consumption preferences** but...

...also measures that **favor the reduction of emissions** generated by **the productive sectors** and, in particular, by **the energy sector**.

