

U.S.

Weekly Watch

September 27, 2010

Highlights

Economic Analysis

Hakan Danış

hakan.danis@bbvacompass.com

Marcial Nava

marcial.nava@bbvacompass.com

Ignacio San Martin

Ignacio.SanMartin@bbvacompass.com

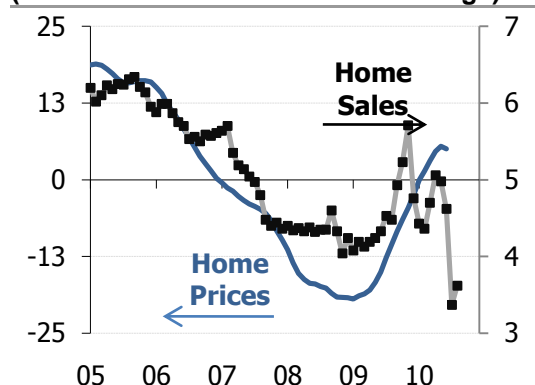
Housing Markets

Sales of existing homes rose in August to a 4.13 million annual pace, a 7.8% increase from July. Housing demand remains low after the fiscal stimulus. In addition, tight mortgage credit standards and weak employment conditions are also limiting the pace of the recovery. However, improved affordability ratios, record-low mortgage rates and low prices, will bring back buyers to the market, providing some support to existing home prices as they are clearly driven by demand. As a result of weak demand, home builders' confidence is cooling down. However, inventories of new homes are at historical low levels, which provide a short term incentive for builders to increase supply. In fact, in August, housing starts were 598 thousand, implying a 10.5% monthly gain.

FOMC Meeting (Sept. 21)

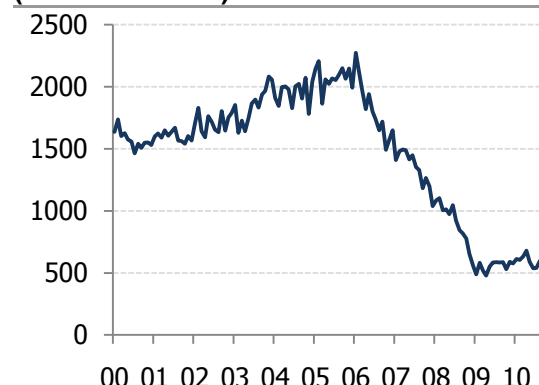
The FOMC members gathered last week for their scheduled meeting. Although there were speculations about whether the Fed would announce a second round of quantitative easing and/or change its policy on interest paid on excess reserves, the FOMC left monetary policy unchanged as we expected. The statement indicated that the Fed recognized slower growth and higher deflationary risks. We expect members to revise down their forecasts which will be released on the next meeting in November 2-3. In addition, members became more concerned on deflationary risks and think that current inflation levels are not "consistent, over the longer run, with its mandate to promote maximum employment and price stability." The statement, in general, aimed to assure market participants that FOMC is considering policy options including a second round of quantitative easing (QE2), to avoid deflation but delayed any potential decision on QE2 until next two-day meeting so that members can have more information on the pace of economic recovery and inflation trends. We believe that while the probability of QE2 has increased, future actions depend on incoming economic data until next FOMC meeting. In the meantime, speeches and the minutes will provide more details on the course of monetary policy in coming months.

Graph 1
Existing Home Sales and Prices
(Million Units and 12-month % change)



Source: S&P and NAR

Graph 2
Housing Starts
(Thousand units)



Source: Census Bureau

Week Ahead

Consumer Confidence (September, Tuesday 10:00 ET)

Forecast: 53.5	Consensus: 52.3	Previous: 53.5
-----------------------	------------------------	-----------------------

Consumer confidence has been subdued since the start of the financial crisis. The index decreased from 111.2 in February 2007 to its historical low of 25.3 in February 2009. The index is currently at 53.5 which is still significantly lower than its historical average due to high unemployment, weak labor market and high uncertainty in business conditions. We expect consumer confidence to remain flat in September.

Gross Domestic Product (2Q10 Final, Thursday 08:30 ET)

Forecast: 1.6%	Consensus: 1.6%	Previous: 1.6%
-----------------------	------------------------	-----------------------

Bureau of Economic Analysis (BEA) will release its final estimate of GDP for 2Q10. BEA had estimated 1.6% annualized growth for 2Q10 and we expect no further revision. Based on the latest data, in 2Q10 PCE increased by 2.0% which is the highest growth rate since 1Q07. However, we keep our baseline scenario of low PCE growth due to ongoing household deleveraging process, increased uncertainty in the economy and high unemployment rates. The market will be waiting for the BEA's preliminary estimate for 3Q10 which will be released on October 29.

Personal Income and Outlays (August, Friday 08:30 ET)

Forecast: 0.3%, 0.3%	Consensus: 0.3%, 0.3%	Previous: 0.2%, 0.4%
-----------------------------	------------------------------	-----------------------------

In July, personal income increased by 0.2% while personal consumption expenditures (PCE) jumped 0.4%. Even after removing price level changes PCE increased by 0.2% compared to a 0.1% increase in the previous month. We expect that both nominal personal income and spending will grow 0.3% in August and personal saving, as a percentage of disposable personal income, will remain around 5.9%.

ISM Manufacturing (September, Friday 10:00 ET)

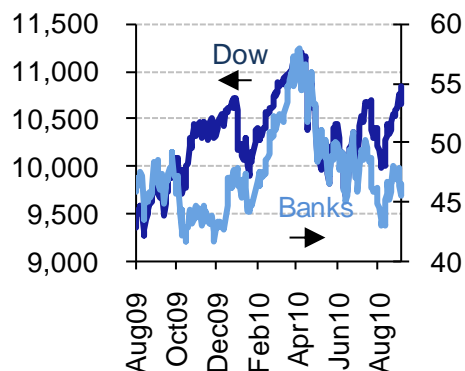
Forecast: 55.0	Consensus: 54.5	Previous: 56.3
-----------------------	------------------------	-----------------------

The Institute of Supply Management Purchasing Managers' Index (ISM PMI) is expected to remain above 50 in September. The index increased 0.8 point in August after dropping three consecutive months. The market was expecting a drop due to disappointing results of regional Fed manufacturing surveys. The index has been above 50 since August 2009 indicating an expansion in economic activity. Nevertheless, we expect the index will decline in September given the fact that regional Fed surveys continue to indicate a slowdown in manufacturing activity and moderate economic recovery.

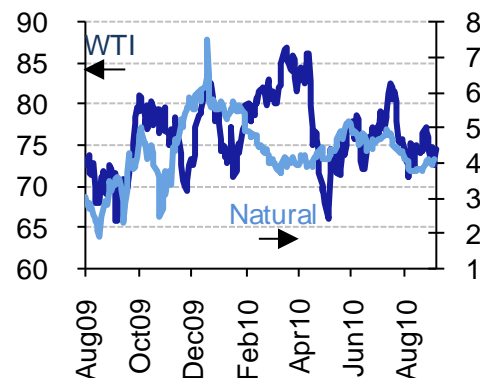
Market Impact

Another busy week is waiting for the markets. BEA's final estimate of GDP is the most important release of the week and we expect no significant revision. However, any significant downward revision to GDP data would increase doubts over sustainability of economic recovery and incite double-dip fears. On the other hand, better than expected data in ISM manufacturing index would give positive signals to the market and help dispel some of the pessimism in the market.

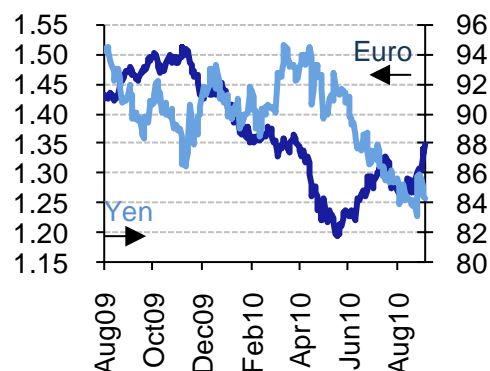
Financial Markets

Graph 3
Stocks (Index, KBW)

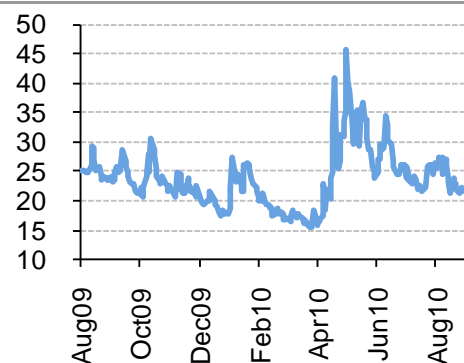
Source: Bloomberg & BBVA Research

Graph 4
Commodities (Dpb & DpMMBtu)

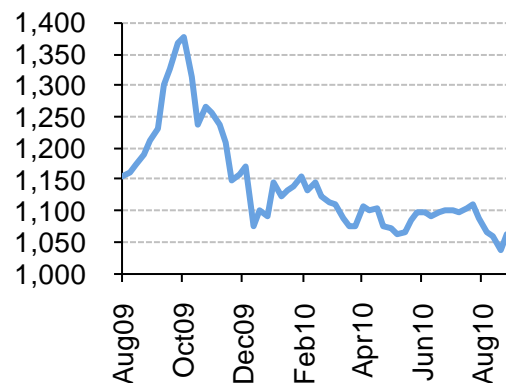
Source: Bloomberg & BBVA Research

Graph 5
Currencies (Dpe & Ypd)

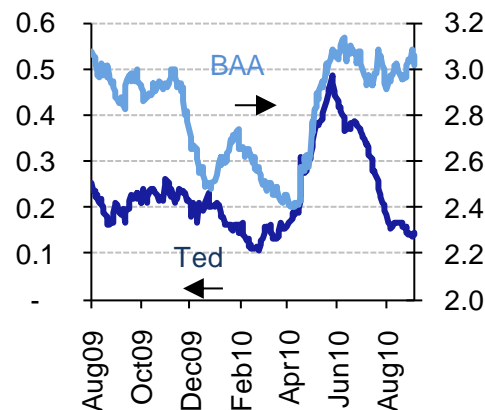
Source: Bloomberg & BBVA Research

Graph 6
Volatility (Vix, Index)

Source: Bloomberg & BBVA Research

Graph 7
Commercial Paper Issuance (US\$Bn)

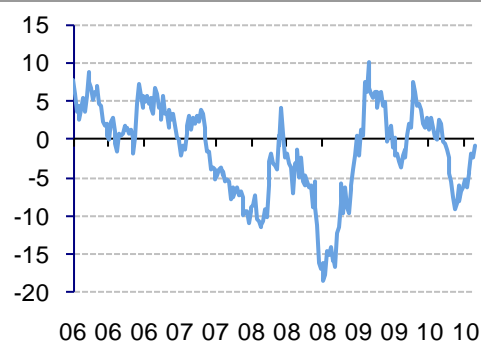
Source: Bloomberg & BBVA Research

Graph 8
TED & BAA Spreads (%)

Source: Bloomberg & BBVA Research

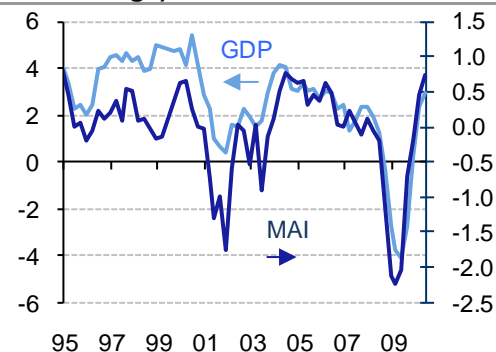
Economic Trends

Graph 9
**BBVA US Weekly Activity Index
(3 month % change)**



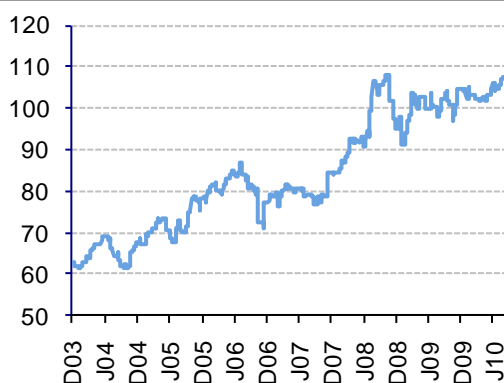
Source: BBVA Research

Graph 10
**BBVA US Monthly Activity Index & Real
Gross Domestic Product
(4Q % change)**



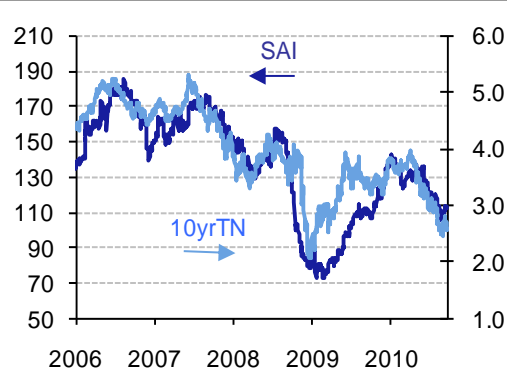
Source: BBVA Research & BEA

Graph 11
**BBVA US Surprise Inflation Index
(Index 2009=100)**



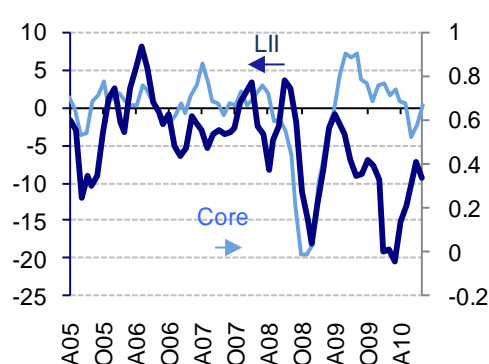
Source: BBVA Research

Graph 12
**BBVA US Surprise Activity Index & 10-yr
Treasury (Index 2009=100 & %)**



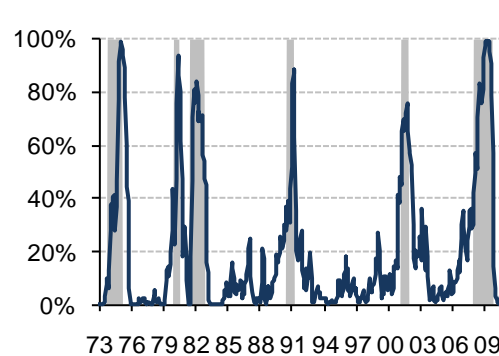
Source: Bloomberg & BBVA Research

Graph 13
**BBVA US Leading Inflation Index & Core
Inflation (Qoq % change)**



Source: BLS & BBVA Research

Graph 14
**BBVA US Recession Probability Model
(Recession episodes in shaded areas, %)**



Source: BBVA Research

Yield Curve and Interest Rates

Table 1

Key Interest Rates, %

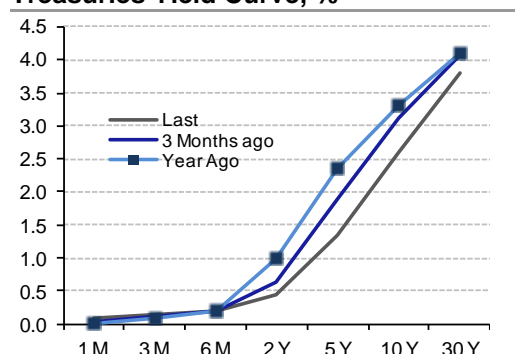
	Last	Week ago	4-Weeks ago	Year ago
Prime Rate	3.25	3.25	3.25	3.25
Credit Card (variable)	13.58	13.58	13.44	11.41
New Auto (36-months)	5.91	5.90	6.08	7.21
Heloc Loan 30K	5.52	5.52	5.51	5.86
30-year Fixed Mortgage *	4.37	4.37	4.36	5.04
Money Market	0.69	0.98	0.73	1.10
2-year CD	1.40	1.40	1.45	1.94
5-year CD	2.29	2.33	2.36	2.68

* Freddie Mac National Mortgage Homeowner Commitment 30 Year US

Source: Bloomberg and BBVA Research

Graph 15

Treasuries Yield Curve, %



Source: Bloomberg

Quote of the Week

Chicago Federal Reserve Bank President Charles Evans
September 23, 2010
International Banking Conference
Chicago, IL

"As we have seen during the recent global crisis, the interconnectedness of financial markets goes beyond our domestic borders.... It is obvious that we need to do a better job of identifying cross-border linkages and their associated risks."

Economic Calendar

Date	Event	Period	Forecast	Survey	Previous
28-Sep	S&P/CS 20 City MoM% SA	JUL	0.3%	-0.1%	0.3%
28-Sep	S&P/CS Composite-20 YoY	JUL	4.2%	3.1%	4.2%
28-Sep	Consumer Confidence	SEP	53.5	52.3	53.5
30-Sep	GDP QoQ (Annualized)	2Q T	1.6%	1.6%	1.6%
30-Sep	Personal Consumption	2Q T	2.0%	2.0%	2.0%
30-Sep	GDP Price Index	2Q T	1.9%	1.9%	1.9%
30-Sep	Core PCE QoQ	2Q T	1.1%	1.1%	1.1%
30-Sep	Initial Jobless Claims	25-Sep	463K	460K	465K
30-Sep	Continuing Claims	18-Sep	4460K	4473K	4489K
1-Oct	Personal Income	AUG	0.3%	0.3%	0.2%
1-Oct	Personal Spending	AUG	0.3%	0.3%	0.4%
1-Oct	PCE Deflator (YoY)	AUG	1.4%	1.5%	1.5%
1-Oct	PCE Core (MoM)	AUG	0.1%	0.1%	0.1%
1-Oct	PCE Core (YoY)	AUG	1.3%	1.4%	1.4%
1-Oct	U. of Michigan Confidence	SEP F	68.0	67.0	66.6
1-Oct	ISM Manufacturing	SEP	55.0	54.5	56.3
1-Oct	ISM Prices Paid	SEP	58.8	59.3	61.5
1-Oct	Construction Spending MoM	AUG	0.0%	-0.4%	-1.0%
1-Oct	Domestic Vehicle Sales	SEP	8.71M	8.60M	8.66M
1-Oct	Total Vehicle Sales	SEP	11.42M	11.50M	11.46M

Chief Economist for US and Mexico

Jorge Sicilia

J.Sicilia@bbva.bancomer.com

Chief Economist for US

Nathaniel Karp

Nathaniel.karp@bbvacompass.com

Ignacio San Martin

Ignacio.SanMartin@bbvacompass.com

Jeffrey Owen Herzog

Jeff.Herzog@bbvacompass.com

Marcial Nava

Marcial.Nava@bbvacompass.com

Hakan Danış

Hakan.Danis@bbvacompass.com

Jason Frederick

Jason.Frederick@bbvacompass.com

Contact details

BBVA Research

5 Riverway Drive

Houston, Texas 77056

BBVA Research reports are available in English and Spanish

DISCLAIMER

This document and the information, opinions, estimates and recommendations expressed herein, have been prepared by Banco Bilbao Vizcaya Argentaria, S.A. (hereinafter called "BBVA") to provide its customers with general information regarding the date of issue of the report and are subject to changes without prior notice. BBVA is not liable for giving notice of such changes or for updating the contents hereof.

This document and its contents do not constitute an offer, invitation or solicitation to purchase or subscribe to any securities or other instruments, or to undertake or divest investments. Neither shall this document nor its contents form the basis of any contract, commitment or decision of any kind.

Investors who have access to this document should be aware that the securities, instruments or investments to which it refers may not be appropriate for them due to their specific investment goals, financial positions or risk profiles, as these have not been taken into account to prepare this report. Therefore, investors should make their own investment decisions considering the said circumstances and obtaining such specialized advice as may be necessary. The contents of this document is based upon information available to the public that has been obtained from sources considered to be reliable. However, such information has not been independently verified by BBVA and therefore no warranty, either express or implicit, is given regarding its accuracy, integrity or correctness. BBVA accepts no liability of any type for any direct or indirect losses arising from the use of the document or its contents. Investors should note that the past performance of securities or instruments or the historical results of investments do not guarantee future performance.

The market prices of securities or instruments or the results of investments could fluctuate against the interests of investors. Investors should be aware that they could even face a loss of their investment. Transactions in futures, options and securities or high-yield securities can involve high risks and are not appropriate for every investor. Indeed, in the case of some investments, the potential losses may exceed the amount of initial investment and, in such circumstances, investors may be required to pay more money to support those losses. Thus, before undertaking any transaction with these instruments, investors should be aware of their operation, as well as the rights, liabilities and risks implied by the same and the underlying stocks. Investors should also be aware that secondary markets for the said instruments may be limited or even not exist.

BBVA or any of its affiliates, as well as their respective executives and employees, may have a position in any of the securities or instruments referred to, directly or indirectly, in this document, or in any other related thereto; they may trade for their own account or for third-party account in those securities, provide consulting or other services to the issuer of the aforementioned securities or instruments or to companies related thereto or to their shareholders, executives or employees, or may have interests or perform transactions in those securities or instruments or related investments before or after the publication of this report, to the extent permitted by the applicable law.

BBVA or any of its affiliates' salespeople, traders, and other professionals may provide oral or written market commentary or trading strategies to its clients that reflect opinions that are contrary to the opinions expressed herein. Furthermore, BBVA or any of its affiliates' proprietary trading and investing businesses may make investment decisions that are inconsistent with the recommendations expressed herein. No part of this document may be (i) copied, photocopied or duplicated by any other form or means (ii) redistributed or (iii) quoted, without the prior written consent of BBVA. No part of this report may be copied, conveyed, distributed or furnished to any person or entity in any country (or persons or entities in the same) in which its distribution is prohibited by law. Failure to comply with these restrictions may breach the laws of the relevant jurisdiction.

This document is provided in the United Kingdom solely to those persons to whom it may be addressed according to the Financial Services and Markets Act 2000 (Financial Promotion) Order 2001 and it is not to be directly or indirectly delivered to or distributed among any other type of persons or entities. In particular, this document is only aimed at and can be delivered to the following persons or entities (i) those outside the United Kingdom (ii) those with expertise regarding investments as mentioned under Section 19(5) of Order 2001, (iii) high net worth entities and any other person or entity under Section 49(1) of Order 2001 to whom the contents hereof can be legally revealed.

The remuneration system concerning the analyst/s author/s of this report is based on multiple criteria, including the revenues obtained by BBVA and, indirectly, the results of BBVA Group in the fiscal year, which, in turn, include the results generated by the investment banking business; nevertheless, they do not receive any remuneration based on revenues from any specific transaction in investment banking.

BBVA and the rest of entities in the BBVA Group which are not members of the New York Stock Exchange or the National Association of Securities Dealers, Inc., are not subject to the rules of disclosure affecting such members.

"BBVA is subject to the BBVA Group Code of Conduct for Security Market Operations which, among other regulations, includes rules to prevent and avoid conflicts of interests with the ratings given, including information barriers. The BBVA Group Code of Conduct for Security Market Operations is available for reference at the following web site: www.bbva.com / Corporate Governance".