

Mexico

Weekly Watch

October 1, 2010

The week to come

Economic Analysis

Julián Cubero

juan.cubero@bbva.bancomer.com

Javier Amador

javier.amador@bbva.bancomer.com

Market Analysis

Octavio Gutiérrez

o.gutierrez3@bbva.bancomer.com

Mexico, a glimpse at the third quarter

Next week we will be wrapping up the quarter for relevant indicators, such as formal employment, manufacturing expectations and inflation. In terms of employment, sustained month-to-month growth near 0.3% has been observed, slightly below that of the first half of the year, a support for the performance of domestic spending (or, rather, the support in the face of braking of the stagnation of work revenue). As regards the indications given by the IMEF, the strong performance of the most recent export data could lead to a surprising change in an overall scenario of deceleration of activity. Thus, in 3Q10, GDP will significantly slow in annual terms and fall slightly in the quarterly rate. And, regarding inflation in September, it will confirm that the lowest rate of the year (3.7%) was registered in 3Q10, with a forecasted limited increase (4.2%) in 4Q10.

The varying approaches of the central banks are weighing on their currencies...

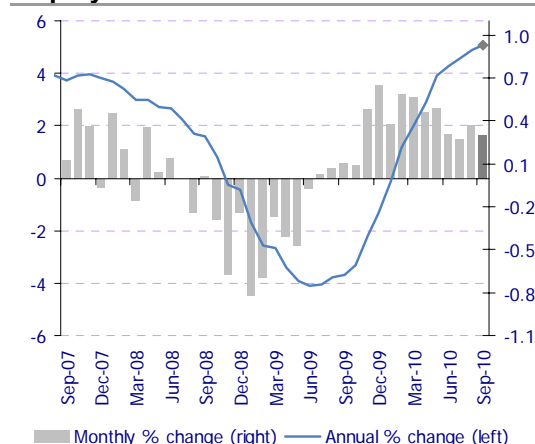
The Fed and the Bank of England appear to be more willing to relaunch their “quantitative easing” policy (QE2), while the ECB is underway in a gradual process of eliminating exceptional measures. In this context, the effective euro exchange rate has gone back to April 2010 levels. Could this be the ECB's comfort level? Regarding the cycle, we have not observed any solid reason for a change in the bias of the monetary policy. Economic data from the euro zone suggested that the recovery is maintained in Q3, though it is far from the impressive quarterly GDP growth seen in the previous quarter. Furthermore, data released in the US this week has been somewhat disappointing: consumer confidence fell significantly in September; ISM manufacturing dropped from 56.3 to 54.4 in the same month. All eyes will be on the employment data next week.

...such that speculation over the monetary measures in the US implied a slight increase in the appetite for assets in Mexico

As speculation over US monetary actions continues, we expect the peso to keep fluctuating between 12.5 and 12.65 ppd. We should point out the weekly increase in the long positions in pesos in CME, the greatest since October 2009, as well as the slight increase in volatility. As for long-term bonds, the situation caused a continuation of the rally for 10-year terms. Over the coming days we expect to see a scenario with lateral movements in these bonds. For equity, we expect that the start of the reporting period will function as an element of support.

Chart 1

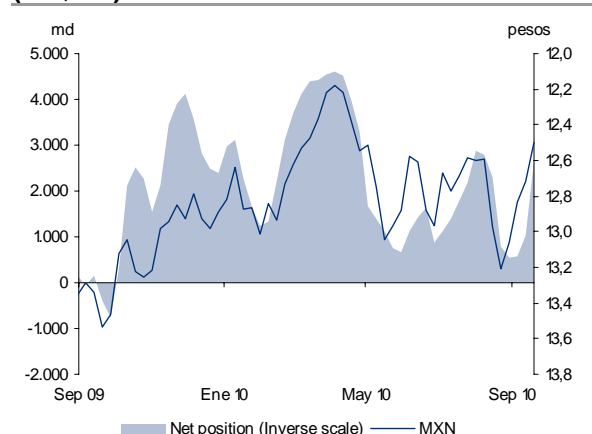
Mexico, formal private-sector employment



Source: BBVA Research and INEGI

Chart 2

MXN: Long Non-Trading Positions in CME (US\$mn)



Source: BBVA Research with Bloomberg data

Economic Analysis

Calendar: Indicators

September Inflation

Thursday, October 7: 0.53% mom (3.7% yoy) Consensus: 0.59% mom Previous: 0.22% mom (3.68% yoy)

For September, we expect a slight increase in overall inflation, after a lower-than-expected first two weeks. Core inflation will rise 0.37% mom, the equivalent of 3.61% yoy. This good performance of core inflation is primarily due to the weakness of internal demand and exchange stability, and the favorable performance of prices for education and food is the cornerstone of the component's slowdown in September. While the favorable performance we expect for inflation is not free of risks, like a potential reversal of the favorable cycle of agricultural products and, possible supply shocks under the other services heading resulting from the situation of Mexico's aeronautical industry, the risk balance is equilibrated. Therefore, we maintain our prediction for the year to close around 4.6%.

The dynamics of foreign demand contribute by supporting employment and the manufacturing IMEF indicator in September

Employment: throughout the week: 0.3% mom (5.1% yoy), Consensus: N/A. mom Previous: 0.4% mom (4.9% yoy)

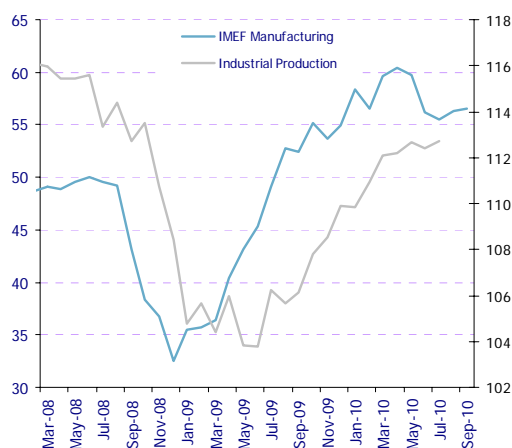
IMEF: Monday, October 4: 56.6 pts Consensus: NA Previous: 56.3 pts

Formal private-sector employment will continue to slow towards the halfway point of the third quarter. Specifically, we estimate a monthly variation of around 0.3% (5.1% yoy), the equivalent of nearly 536 thousand formal jobs more than in the last month of 2009. Though employment attached to the IMSS is recovering consistently, the other component of the wage bill, the primary determining factor of private consumption and, with that, domestic demand, are maintained at low levels and even negative rates of yearly change.

The IMEF indicator will continue well over 50 points but with a trend towards moderation. This is accompanied by the industrial dynamic and is closely linked to the export sector. Keep in mind that manufacturing exports have maintained their growth of nearly 25% yoy in the last quarter and enjoy a strong dynamic in monthly terms as well. We calculate that the IMEF indicator will be situated at 56.6 points, which will imply a half-point increase as compared to the previous report.

Chart 3

IMEF Manufacturing index and industrial production (2003 index=100 and pts)



Source: BBVA Research with IMEF and INEGI data

Market Analysis

Macro Latam Strategy
Chief Strategist
Octavio Gutiérrez Engemann
o.gutierrez3@bbva.bancomer.com
+5255 5621 9245

LatAm FX
Chief Strategist
Moisés Junca, CFA, CMT
moises.junca@bbva.bancomer.com
+5255 5621 9380

Claudia Ceja
claudia.ceja@bbva.bancomer.com
+5255 5621 9715

Fixed Income Analysis, Mexico
Chief Strategist
Ociel Hernández
o.hernandez@bbva.bancomer.com
+5255 5621 9616

Fixed Income Analysis
Liliana Solís
liliana.solis@bbva.bancomer.com
+5255 5621 9877

Technical Analysis
Alejandro Fuentes
a.fuentes@bbva.bancomer.com
+52 55 5621 9975

Markets

Possible “quantitative easing” of the Fed of the US implies that the peso fluctuates between 12.5 and 12.65 ppd. The greatest weekly increase since October 2009 was recorded in the long speculative peso position in Chicago

In the event the central banks of the US and UK relaunch their “quantitative easing” policy, the peso remained within a 12.50-12.65 range, which we expect to continue in the short term. There are two positioning elements that justify this: First, September 28 data shows a 157% increase in the long speculative peso position in Chicago, the greatest weekly increase since mid October 2009. Thus, the position is again at the levels reached in mid August (US\$2.6mm), and though it is far from the maximums reached in April (US\$4.6mm) the movement appeared with a displacement of the peso to the 12.20 zone. Second, the implied volatility registered a weekly increase of 0.2 vegas (the weekly increase of the VIX was 3.6%), but is still below the average for the last 6 months (11.1% vs. 14.3%).

Profit-taking in the international debt curves correct the rally recorded throughout the week.

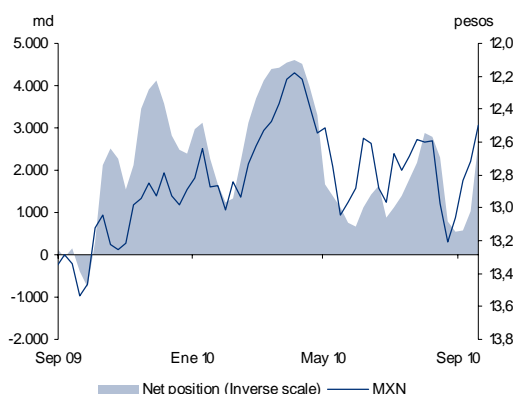
On Friday, the flattening of the curve recorded in the week reversed almost completely. They increased by 10 and 12 bp in 10 and 20 years, respectively. This adverse adjustment in the volatility of the Bonds gave rise to a greater appetite for long positions on the curve *Swap*. In general, the international debt markets resented the profit-taking driven by the publication of positive economic data in Asia, and a decreased appetite by *Treasuries* on behalf of investors in this region, who have, until now, lead the *bullish* aspect of the curves. The context of the level and slope of the domestic curve has not changed; we expect the curve to continue to register lateral movements with a resistance at levels of 6.3% for the 10-year and support at 6.0%.

Capital market in Mexico with better performance than in developed countries, but with greater weakness in Latam. Results season in Mexico as support

The region has continued to differentiate itself positively among the global stock exchanges; though Mexico has exceeded the indices of developed countries, its performance has been weak in the region. As regards the weeks to come, and having concluded the quarter, the focus will be on the results period. We expect the reports to be a support element; nevertheless, we expect modest results in year-on-year terms for the third quarter due to its elevated basis for comparison. For Mexico, we expect the growth rates of 5.4% in sales, 7.0% in EBTIDA and 7.3% in net profit; while for the US, the consensus expects 9.15% in sales and 23.3% in EPS, with ALCOA being the most relevant report on Thursday of this week.

Chart 4

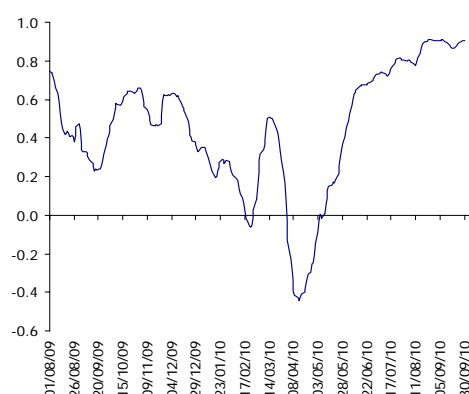
MXN: Long Non-Trading Positions in CME (US\$mn)



Source: BBVA Research with Bloomberg data

Chart 5

Rolling correlation between Mexican and US 10-year Bonds (mp 2 months)



Source: BBVA Research with Bloomberg data

Technical Analysis

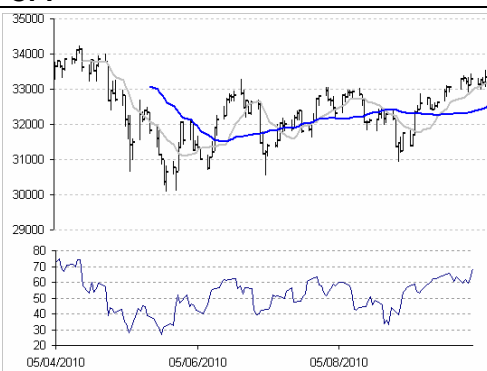
Market Analysis Equity

Technical Analysis

Alejandro Fuentes Pérez (*)
a.fuentes@bbva.bancomer.com
5255 5621 9705

(*) Author(s) of the report

CPI

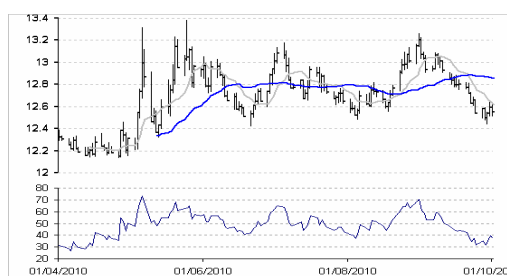


Source: BBVA Bancomer, Bloomberg

CPI: The CPI closes the week with a significant upward movement that breaks the lateral formation of the previous sessions and that keeps our perspective for a return to the 34,000/34,200pts zone current. The 33,400 pts level is once again a short-term support.

Previous record: After this break, the next objective short-term level is at the 34,000/34,200 pts zone, a positive prospect maintained as long as it continues to operate above the aforementioned support.

MXN

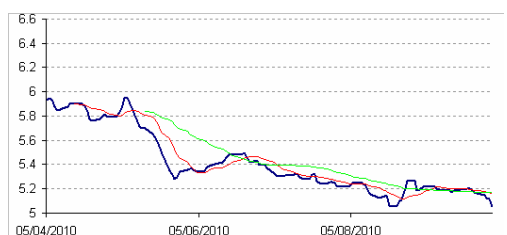


Source: BBVA Bancomer, Bloomberg

MXN: Respect for the P\$12.50 support level during the week, attempting a rebound. This has not had the forces needed to be placed above the moving 10-day average, which maintains the latent risk of breaking P\$12.50 in search of the following steps in P\$12.37 and \$12.20.

Previous record: The next support is at P\$12.50, where the most recent rebound occurred.

3-YEAR M BOND

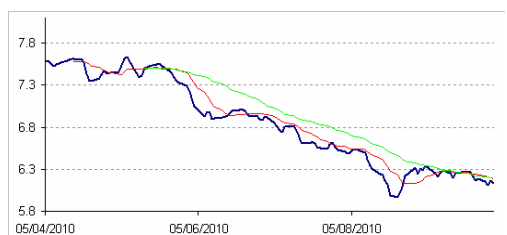


Source: BBVA Bancomer, Bloomberg

3-YEAR M BOND: (yield): The downward trend is resumed, with a return to the 5.10 zone. The failed attempt to upturn the 10- and 30-day moving averages maintain the negative trend in the short term.

Previous record: There is still a chance of returning to 5.10.

10-YEAR M BOND



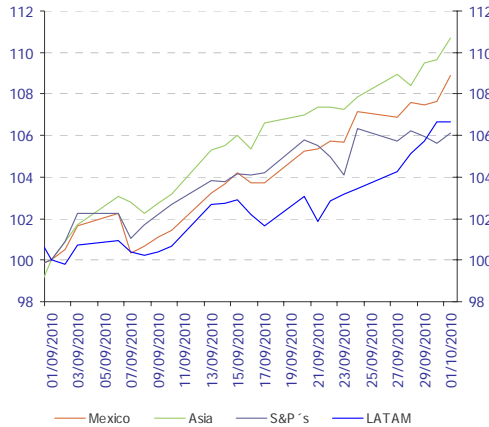
Source: BBVA Bancomer, Bloomberg
Source: BBVA Research with Bloomberg data

10-YEAR M BOND (performance): It remains below the 10-day and 30-day moving averages, which keeps the negative trend and risk of returning to the 6.0 zone current.

Previous record: 10 YEAR M BOND: (performance): Continues to be below rolling averages of 10 and 30 days, with a possibility of returning to 6.0.

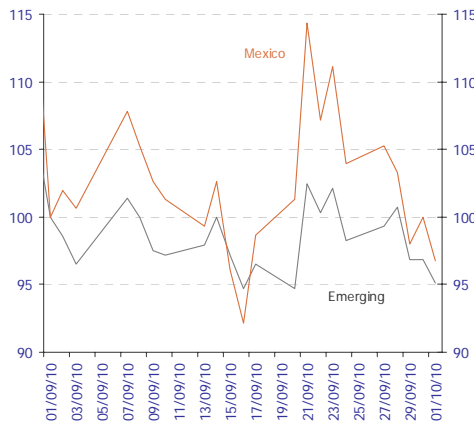
Markets

Chart 6
Stock Market: MSCI indexes (September 1, 2010 index = 100)



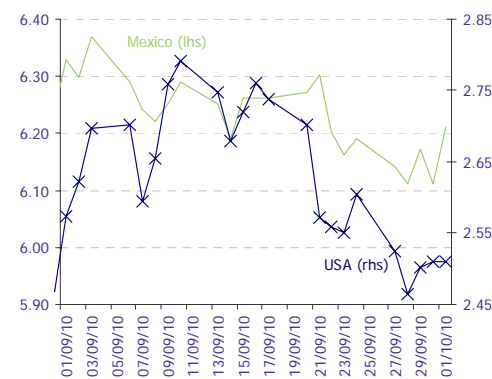
Source: Bloomberg and BBVA Research

Chart 8
Risk: EMBI+ (September 1, 2010 index = 100)



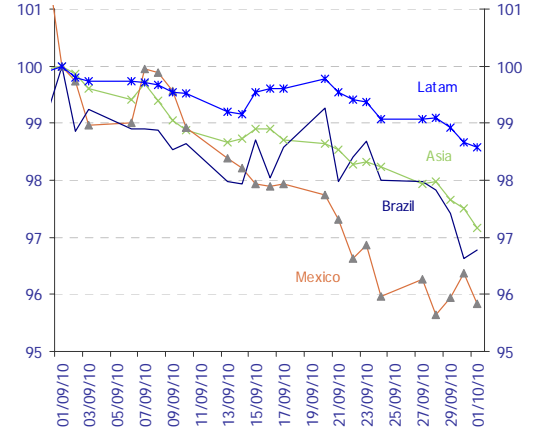
Source: Bloomberg and BBVA Research.

Chart 10
10-year interest rates*, last month



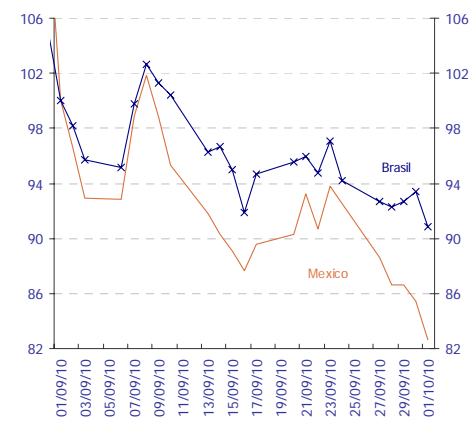
Source: Bloomberg and BBVA Research

Chart 7
Foreign exchange: dollar exchange rates (September 1, 2010 index = 100)



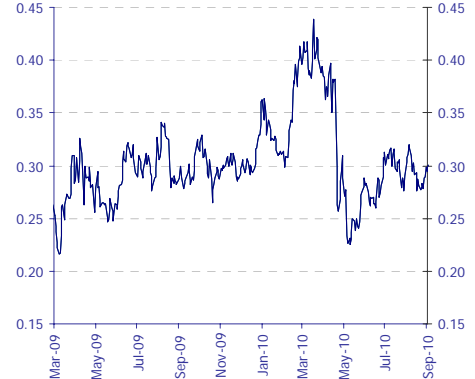
Source: Bloomberg and BBVA Research Note: LatAm includes Argentina, Brazil, Chile, Colombia and Peru. Asia includes the Philippines, South Korea, Taiwan, Singapore, Indonesia and Thailand. Non-weighted averages.

Chart 9
Risk: 5-year CDS (September 1, 2010 index = 100)



Source: Bloomberg and BBVA Research.

Chart 11
Mexico carry-trade index (%)



Source: Bloomberg and BBVA Research

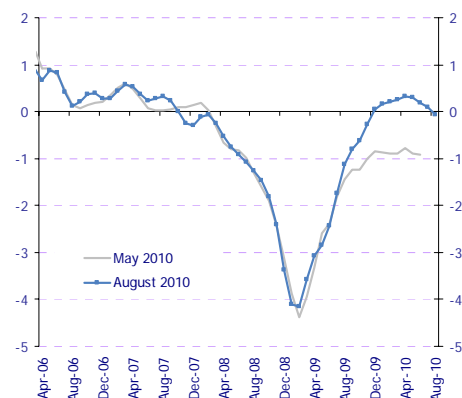
The positive differentiation of the peso with respect to other emerging currencies intensifies.

The Mexico country risk drops more than other emerging countries.

The rally continues in the long part of the curve with a rebound at the closing of the week.

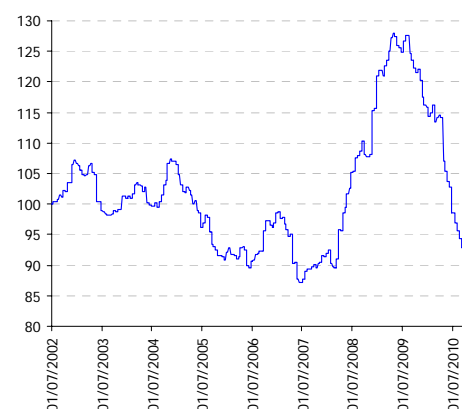
Economic activity, inflation, monetary conditions

Chart 12
**Economic Cycle Indicator
(standardized)**



Source: BBVA Research with data from INEGI, AMIA and BEA. The weighted sum of 21 different indicators of economic activity, spending and expectations based on trend series.

Chart 14
**Index of Inflationary Surprises
(July 2002=100)**



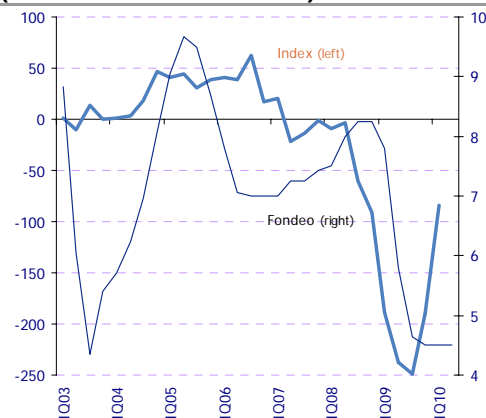
Source: BBVA Research, with data from Banxico on the monthly surveys of expectations of specialists in the private-sector economy.

Chart 16
Index of monetary conditions



Source: BBVA Research

Chart 13
**Indicator of inflationary demand pressures and bank lending rates
(standardized index & %)**



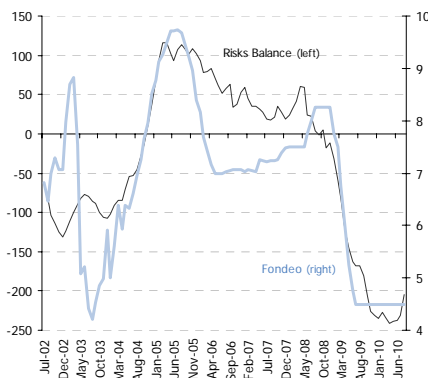
Source: BBVA Research and Banxico

Chart 15
**Index of Economic Activity Surprises
(2002=100)**



Source: BBVA Research with Bloomberg data. Difference between the registered data and the Bloomberg consensus for seven variables of economic activity in Mexico. Standardized index. Rises (falls): positive (negative) surprises.

Chart 17
Balance of Inflationary Risks* and Lending Rates (standardized and %; monthly averages)



Source: BBVA Research. * Standardized and weighted index (between inflation and economic growth); it uses economic indicators of economic activity and inflation. A rise in the IBR points to a greater weight of inflationary risks compared to growth and thus a greater possibility of monetary restriction.

The Mexican economy is in better shape than a few months ago, but the monthly rate of recovery appears to be slowing.

Compared with the consensus, inflationary surprises are still downward

Monetary conditions are accommodative. No rush to raise monetary rates; no need to lower them

IMPORTANT DISCLOSURES**Analyst Certification**

I, **Moisés Junca, Claudia Ceja, Ociel Hernández, Liliana Solís, Alejandro Fuentes, Rodrigo Ortega y Octavio Gutiérrez Engemann**, hereby certify that the views expressed in this research report accurately reflect my personal views about the mentioned corporation(s) and its (their) securities. I also certify that I have not been, am not, and will not be receiving direct or indirect compensation in exchange for any specific recommendation in this report.

Rating, target price and price history information for the companies that are the subject of this report are available at www.bancomer.com

Receipt of Compensation / Provision of Services current as of 9/13/10

Management or Co- Management of Public Offering. Within the past twelve months, BBVA Bancomer, S.A., Institución de Banca Múltiple, Grupo Financiero BBVA Bancomer ("BBVA Bancomer"), and/or its affiliates, have participated as manager or co-manager in public offerings, and received compensation for these services, of the company(ies), which is(are) the subject of this report: **Actinver, Banco Interacciones, Banco Inbursa, BNP, Bimbo, Cemex, Comisión Federal de Electricidad, Corporación Interamericana de Inversiones, Chedraui, Daimler, Embotelladoras Arca, El Puerto de Liverpool, Ferrocarril Mexicano, Fonacot, GE Capital Bank, GMAC, Hipotecaria su Casita, Maxcom, Megacable, Nemak, NRF(Nissan), Paccar, Pemex, Posadas, Prudential Fiancial, Ruba, Telmex Internacional, Toyota, Urbi, VWLease.**

Investment Banking Compensation. Within the past twelve months, BBVA Bancomer, and/or its affiliates, have received compensation for investment banking, common representation and credit related services from the Company/ies, which is(are) the subject of this report: **Acciona, Aeromexico, Agropecuaria Santa Genoveva, Alsea, América Móvil, Avicola Pilgrim's Pride de Mexico, Axtel, Bancomext, Banco de Credito e Inversiones, Banorte, Cemex, Cencosud, CIE, Cintra, Colbun, Comercial Mexicana, Comisión Federal de Electricidad, Concesionaria Mexiquense, Consorcio Comex, Controladora de Farmacias, Copamex, Coppel, Corporacion Geo, Corporativo Arca, Corporación Moctezuma, Credito Inmobiliario, Daimler Chrysler de México, Dine, El puerto de Liverpool, El palacio de Hierro, Empresas Cablevisión, Endesa (Chile), Facileasing, Factoring Corporativo, Farmacias Benavides, FCC, Femsa, Ferrosur, Fomento de Infraestructura Turistica Cancun, GEO, Gruma, Grupo Alfa, Grupo Ara, Grupo Brescia, Grupo Bimbo, Grupo Carso, Grupo Casa Saba, Grupo Cementos de Chihuahua (GCC), GAP, Grupo Comercial Chedraui, Grupo Collado, Grupo Comercial Gomo, Grupo Dermat, Grupo Elektra, Grupo Famsa, Grupo Femsa, Grupo Financiero Inbursa, Grupo R, Grupo Scotiabank, Grupo Herdez, Grupo ICA, Grupo La Moderna, GMAC, Grupo Maseca, Grupo México, Grupo Posadas, Grupo R, Grupo Sanborns, Grupo TMM, Grupo Videomax, Grupo Xignux, Hilasal Mexicana, Homex, HSBC, Holcim (Apasco), Hylsamex, Imsa/Tarida/Ternium, Industrias Bachoco, Hipotecaria Casa Mexicana, Hipotecaria su Casita, Industrias Aluprint, Industrias CH, Industrias Peñoles, Inmobiliaria Ruba, Interceramic, Kansas City Southern de México, Kaupthing Bank, Kimberly Clark Mexico, Lamosa, Liverpool, Mabe, Manufacturas Kaltex, Medica Sur, Megacable, Mexichem, Molytmet, Municipio de Aguascalientes, Nadro, Nafin, NRF Mexico, Nemak, OHL, Paccar, Pasa, Pemex, Petrotemex, Pimsa, Plavicom, Prolec GE, Ruba, Sare, Sears, Sigma, Simec, Scotia Bank Inverlat, Techint, Telefónica CTC, Telefónica Móviles, Telint, Tenaris, Toyota, Urbi, Value, Volcan Cia Minera, VWLease.**

Expected Investment Banking and services Compensation. In the next three months, BBVA Bancomer, and/or any of its affiliates, expects to receive or intends to seek compensation for investment banking, common representation and credit related services from the company (ies) discussed in this report.

BBVA Bancomer acts as market maker/specialist in: **MexDer Contrato de Futuros (Dólar de Estados Unidos de América (DEUA), TIIE de 28 días (TE28), Swap de TIIE, CETES de 91 días (CE91)), Bonos M, Bonos M3, Bonos M10, Índice de Precios y Cotizaciones de la BMV (IPC), Contrato de Opciones (IPC, Acciones América Móvil, Cemex, CPO, Femsa UBD, Gcarso A1, Telmex L).**

BBVA acts as market maker/specialist in Latibex: **Alfa, AMX, Corporación Geo, Grupo Modelo, ICA, Sare, Telmex.**

BBVA Bancomer, is recognized by Mexico's Finance Ministry as a market improver and acts as a market maker/specialists in MEXDER, Mercado Mexicano de Derivados.

Ownership Positions

BBVA Bancomer, and/or its affiliates holds, directly or indirectly, at least 1 % of the equity capital of the following company/ies whose shares are open to negotiation in organized markets and which is(are) the subject of this report: **BOLSA, CEMEX VENEZUELA, GAP, GRUPO SIMEC, GRUPO VIDEOVISA, PASA.**

BBVA Bancomer, and/or its affiliates hold(s), directly or indirectly; as of the end of the last quarter, at least a 10 % of it's investment portfolio, or 10% of the amount issued, of the securities or underlying investments issued by the companies which is(are) the subject of this report: **AXTEL**.

Other Disclosures

To the best of BBVA Bancomer's knowledge, a Member of it's Board, it's CEO or Senior Manager holding a direct reporting position to BBVA Bancomer's CEO holds a similar position in any of the following company/ies which is(are) the subject of this report: **Alfa, Alsea, Amx, Asur, Bimbo, CMR, Dine, Femsa, GAP, Gmodelo, Grupo financiero Inbursa, Grupo Carso, Grupo Posadas, Hogar, Invex, Kof, Kuo, Liverpool, Maseca, Oma, Peñoles, Sanborns Hermanos, Sears Roebuck, Telecom, Telefónica Móviles México, Telmex, Tenaris, Tlevisa, Urbi, Vitro.**

Additional Information and Disclaimer

Ratings and Price Targets

As of June 30, 2010, for the whole universe of companies which BBVA Bancomer, has under coverage there are **50%** Buy ratings (including "Buy" and "Outperform"), **4%** Neutral ratings and **46%** Sell ratings (including "Sell" and "Underperform"). BBVA Bancomer or any of its affiliates has rendered Investment Banking services or participated as manager and/or co-manager in public offerings in **45%** of the Buy ratings, **11%** of the Neutral ratings and in **44%** of the Sell ratings.

Ratings are set on a six-month or year-end basis against the relevant benchmark. BBVA Bancomer issues three equity recommendations: **Outperform:** Upside potential of more than 5% vs. the market. **Neutral:** Stock is expected to perform in line with the market (+/-5%). **Underperform:** Expected downside of at least 5% vs. the market:

Recommendations reflect the stock's expected performance vs the market, within a specified period. This performance may be explained by the fundamental stock valuation method and other factors. The fundamental stock valuation method used by BBVA Bancomer S.A., is based on a combination of one or more generally accepted financial analysis methodologies, which may include, multiples, discounted cash flows, sum of parts or any other methodology that applies to the particular case. Notwithstanding other factors include newsflows, benefit timing, M & A's and market's appetite in a given sector. These factors can lead to a recommendation contrary to that indicated by the simple fundamental valuation results and its comparison with direct quotations.

This document and the information, opinions, estimates and recommendations expressed herein, have been prepared by BBVA Global Markets Research an affiliate of Banco Bilbao Vizcaya Argentaria, S.A. (BBVA) and/or BBVA Bancomer, to provide their or its customers with general information as of the date of the report and are subject to changes without prior notice. BBVA Bancomer is not liable for giving notice of such changes or for updating the contents hereof. This document and its contents do not constitute an offer, invitation or solicitation to purchase or subscribe to any securities or other instruments, or to undertake or divest investments. Neither shall this document nor its contents form the basis of any contract, commitment or decision of any kind. For more information please contact the persons included in the directory of this document.

The determination of a price target does not imply any warranty that it will be attained. For a discussion of the risks associated with the attainment of price targets, which depend on intrinsic and extrinsic factors that affect both the performance and trends prevailing in the market on which the recommended securities is traded and/or offered, please refer to our recently published documents, which are available via e-mail, contact our analysts or visit our internet site www.bancomer.com.

Investors who have access to this document should be aware that the securities, instruments or investments to which it refers may not be appropriate for them due to their specific investment goal, financial position or risk profile, for these have not been taken into account in the preparation of this report. Therefore, investors should make their own investment decisions considering the said circumstances and obtaining such specialized advice as may be necessary.

The contents of this document are based upon information available to the public that has been obtained from sources considered to be reliable. However, such information has not been independently verified by BBVA Bancomer, and therefore no warranty, either express or implicit, is given regarding its accuracy, integrity or correctness. BBVA Bancomer, accepts no liability of any type for any direct or indirect losses arising from the use of the document or its contents.

Investors should note that the past performance of securities or instruments or the historical results of investments do not guarantee future performance. The market prices of securities or instruments or the results of investments could fluctuate against the interests of investors. Investors should be aware that they could even face a loss of their investment.

Transactions in futures, options or high-yield securities can involve high risk and are not appropriate for every investor. Indeed, in the case of some investments, the potential losses may exceed the amount of the initial investment; in such circumstance, investors may be required to pay more money to support those losses. Thus, before undertaking any transaction with these instruments, investors should be aware of their characteristics, as well as the rights, liabilities and risks associated with these securities and their underlying investments. Investors should also be aware that secondary markets for the said instruments may be limited or may not exist.

BBVA Bancomer, or any of its affiliates, as well as their respective executives and employees, may have a position in any of the securities or instruments referred to, directly or indirectly, in this document, or in any other related thereto; they may trade for their own account or for third-party account in those securities, provide consulting or other services to the issuer of the aforementioned securities or instruments or to companies related thereto or to their shareholders, executives or employees, or may have interests or perform transactions in those securities or instruments or related investments before or after the publication of this report, to the extent permitted by the applicable law.

BBVA Bancomer or any of its affiliates' salespeople, traders, and other professionals may provide oral or written market commentary or trading strategies to its clients that reflect opinions that are contrary to the opinions expressed herein. Furthermore, BBVA Bancomer or any of its affiliates' proprietary trading and investment businesses may make investment decisions that are inconsistent with the recommendations expressed herein.

No part of this document may be (i) copied, photocopied or duplicated by any other form or means (ii); redistributed or forwarded; or (iii) quoted, without the prior written consent of BBVA Bancomer. No part of this report may be copied, conveyed, distributed or furnished to any person or entity in any country (or persons or entities in the same) in which its distribution is prohibited by law. Failure to comply with these restrictions may breach the laws of the relevant jurisdiction.

This document is provided in the United Kingdom solely to those persons to whom it may be addressed according to the Financial Services and Markets Act 2000 (Financial Promotion) Order 2001 and it is not to be directly or indirectly delivered to or distributed among any other type of persons or entities. In particular, this document is only aimed at and can be delivered to the following persons or entities (i) those outside the United Kingdom (ii) those with expertise regarding investments as mentioned under Section 19(5) of Order 2001, (iii) high net-worth entities; and (iv) any other person or entity under Section 49(1) of Order 2001 to whom the contents hereof can be legally revealed.

The remuneration system concerning the analyst/s author/s of this report is based on multiple criteria, including the results obtained by BBVA Bancomer and by BBVA Group in the fiscal year, which, in turn, include the results generated by the investment banking business, common representation or credit related services; nevertheless, they do not receive any remuneration based on revenues from the mentioned areas or a specific transaction in investment banking, common representation or credit related services.

The information contained in this document should be taken only a general guide on matters that may be of interest. The application and impact of the laws may vary substantially depending on specific circumstances. Changes in regulations and the risks inherent in electronic communication may cause delays, omissions, or inaccuracy in the information contained in this site. Accordingly, the information contained in the site is supplied on the understanding that the authors and editors do not hereby intend to supply any form of consulting, legal, accounting or other advice. As such, it should not be considered a substitute for the direct advice provided by accounting and fiscal advisors or other competent consultants.

All images and texts and texts are the property of BBVA Bancomer and may not be downloaded from the Internet, distributed, stored, re-used, re-transmitted, modified or used in any way, except as specified in this document, without the express written consent of BBVA Bancomer. BBVA Bancomer reserves all intellectual property rights to the fullest extent of the law. None of the information contained herein may be interpreted as a concession by implication, exclusion or any other means, of any patent or brand of BBVA Bancomer or of any third party. Nothing established herein should be interpreted as a concession of any license or right under any BBVA Bancomer copyright.

BBVA Bancomer, as well as its executives and employees have adopted the Código de Conducta de Grupo Financiero BBVA Bancomer, which is available in our internet site www.bancomer.com.

BBVA Bancomer is regulated by the Comisión Nacional Bancaria y de Valores.

BBVA Bancomer as well as other entities in the BBVA Group that are not members of the FINRA (Financial Industry Regulatory Authority), are not subject to the rules of disclosure affecting such members.

This material is being distributed into the United States in reliance on an exemption from broker-dealer registration under Rule 15a-6 of the Rules under the Securities Exchange Act of 1934. Any trades in the securities discussed in this report must be effected through a U.S. registered broker/dealer as we are not authorized to accept any order to effect trades in any security discussed in this report within the U.S.