

Mexico

# Weekly Watch

October 15, 2010

## Next week

### Economic Analysis

**Julian Cubero**  
 juan.cubero@bbva.bancomer.com

### Market Analysis

**Octavio Gutierrez Engelmann**  
 o.gutierrez3@bbva.bancomer.com

### We do not expect any change in Banxico's funding rate until summer 2012

Today, Friday, Mexico's central bank noted the situation of abundant global liquidity flowing to emerging economies –including Mexico- in search of returns. The Bank's description of this is a first step –once additional relaxation in US monetary policy takes place- towards including this in the balance of risks for economic activity and inflation; this is particularly relevant in terms of the additional weakness of the dollar and the relative appreciation of the peso in the context of capital flowing into the country. Here at BBVA Research we already regard this situation of extremely lax monetary policy in the USA over a lengthy period to be the central case; as a result, we believe that in a domestic context for economic activity with no significant demand pressures and core inflation at historically low levels, Banxico will not change its monetary policy until an increase in summer 2012. However, if capital inflows and the appreciation of the Mexican currency intensify in 2011, Banxico may decide to reduce its base rate.

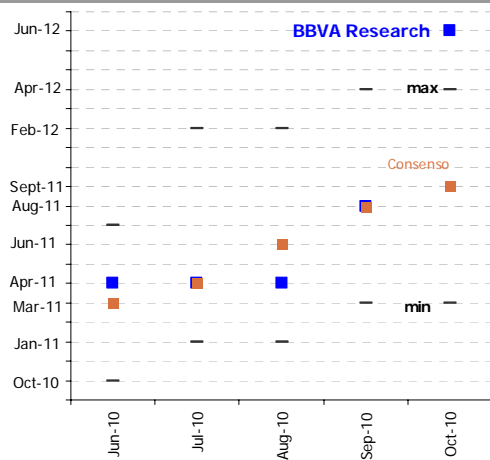
### Global exchange and interest rates – no changes in the short term

Monetary policy is driving exchange rate performance globally: the Fed is going to increase liquidity; the ECB does not seem to be given to additional relaxation through quantitative easing; and emerging economies are in a situation where they might have to adapt their interest rates and intervene to limit the rapid rises in their currencies. This outlook is not going to change before the G20 meeting in November.

### The likelihood of high levels of liquidity resulting from quantitative easing in the USA is continuing to drive the performance of the peso, and demand from foreigners is setting the trend on the short stretch of the curve

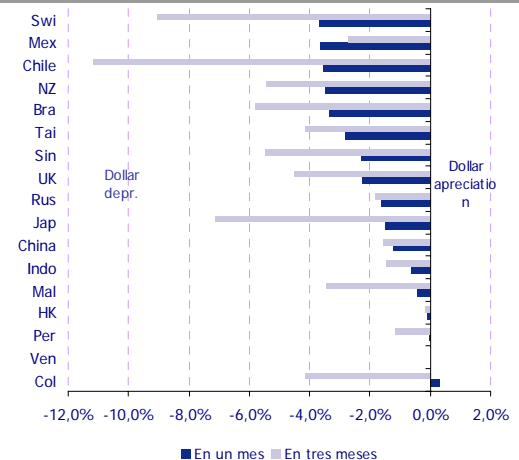
Poor US economic figures at the end of the week reversed gains for the peso after the minutes were released. The upwards trend continues and we expect the currency to fluctuate in the range 12.30-12.45 in the short-term. Demand from foreigners is still determining the trend on the short stretch of the curve (1d to 1y), taking advantage of the arbitrage opportunity in the forward MXN market.

Chart 1  
**The outlook for an increase in the funding rate based on a survey of analysts**



Source: BBVA Research and Banamex survey

Chart 2  
**Exchange Rate vs USD, percentage change (%)**



Source: Bloomberg & BBVA Research

Economic Analysis

Calendar: Indicators

Cecilia Posadas  
c.posadas@bbva.bancomer.com

Pedro Uriz Borrás  
pedro.uriz2@bbva.bancomer.com

Inflation for the first two weeks in October

Friday, October 22: 0.46% mom (3.87% yoy) Consensus: 0.38% mom Previous: 0.40% mom (6.1% yoy)

On Thursday, inflation figures for the first two weeks of October will be released: we forecast that inflation will experience its first significant increase in annual terms, increasing from 3.65% yoy in the first two weeks of September to around 3.9%. This increase is mainly due to pressures from non-core components affected by the start of winter electricity prices and significant pressure from agricultural markets, which are seasonally consistent but which may also reflect the adverse effects on agriculture of the heavy rains in some states in September. Core inflation will remain under control in the absence of exchange rate pressures and lower than expected demand; as a result of these factors, we forecast that it will increase by 0.24% in the quarter, reaching an annual level of 3.62%. Whilst we forecast that there will be an increase in inflation in 4Q10, this is consistent with our inflation forecast of around 4.6% yoy at the end of 2010.

August retail sales and unemployment in September

Sales: Wednesday, October 20: 0.42% mom (2.5% yoy) Consensus: N.A. Previous: 0.0% mom (1.1% yoy)

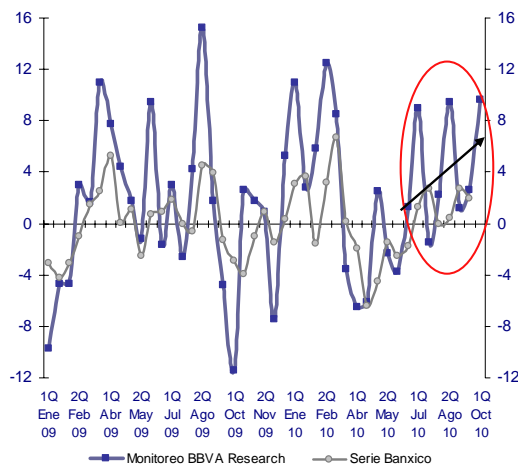
Unemployment: Friday, October 22: 5.1% Consensus: N.A. Previous: 5.2%

We expect to see a slight increase on previous figures -which were static- in the retail sales reported on Wednesday, with sales in August having increased by around 2.5%. It should be noted that retail sales indicators -such as consumer confidence and sub-indices of this such as the ability to acquire durable goods- are still below their pre-crisis maximums, even though they have risen slightly.

September's unemployment rate will remain relatively high, at around 5.1% in seasonally adjusted terms. This unemployment rate is equivalent to around 2.5 million people. The persistence of high unemployment rates may be related to job creation being concentrated in sectors such as manufacturing which are capital intensive.

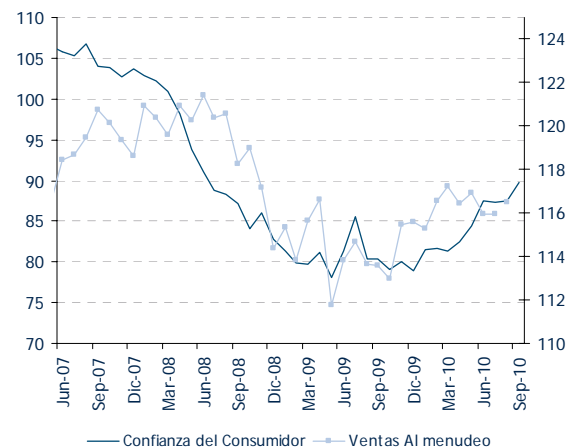
Both of these indicators are continuing to reflect the limited growth in domestic demand and the slowdown in growth in foreign demand.

Chart 3  
BBVA Research monitoring of agricultural prices and the Banxico agricultural prices index (% fortnightly change)



Source: BBVA Research with Banxico and SE data

Chart 4  
Consumer confidence and retail sales (Index 2003=100)



Source: BBVA Research and INEGI

Market Analysis

**Macro Latam Strategy**  
Chief Strategist  
**Octavio Gutiérrez Engelmann**  
o.gutierrez3@bbva.bancomer.com  
+5255 5621 9245

**FX Latam**  
Chief Strategist  
**Moises Junca, CFA, CMT**  
moises.junca@bbva.bancomer.com  
+5255 5621 1930

**Claudia Ceja**  
claudia.ceja@bbva.bancomer.com  
+5255 5621 9715

**Fixed Income Analysis Mexico**  
Chief Strategist  
**Ociel Hernández**  
o.hernandez@bbva.bancomer.com  
+5255 5621 9616

**Liliana Solís**  
liliana.solis@bbva.bancomer.com  
+5255 5621 9877

**Credit LatAm/México**  
Chief Analyst  
**Edgar Cruz**  
edgar.cruz@bbva.bancomer.com  
+52 55 5621 9774

**Technical Analysis**  
**Alejandro Fuentes**  
a.fuentes@bbva.bancomer.com  
+52 55 5621 9975

Markets

**The monetary outlook in the USA continues to affect the performance of the peso, and poor US economic activity figures will temper gains in the currency**

Whilst the main determining factor for the peso continues to be related to expectations of QE2 by the Fed, a number of nuances are arising. Worse than expected US figures at the end of the week (e.g. employment insurance and inflation) resulted in profit taking causing a return to a zone around 12.45, having reached lows of 12.32 on previous days. However, the currency remains below 12.50, and therefore the peso continues to be on an upwards trend.

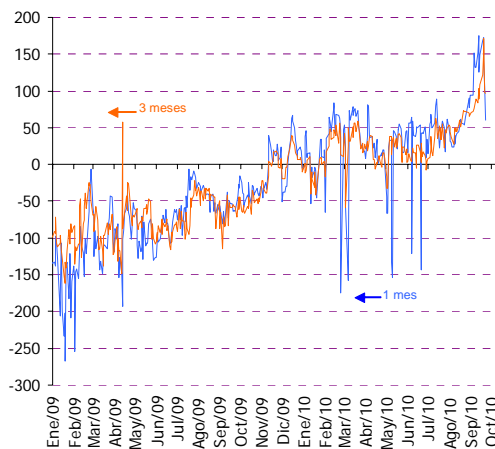
Three factors are particularly important in terms of positioning: firstly, the weekly increase in 1M implicit volatility of 0.50 vegas; secondly, during the week the remaining US\$100 million of Banxico options were exercised; and thirdly, the long speculative position in the MXN on the CME remained practically unchanged at US\$3.4 bn (up just US\$38 million, a weekly increase of 1.1%). As a result of these factors, we expect the currency to fluctuate in the range 12.30-12.45 in the short term.

**Demand from foreigners is setting the trend on the short stretch of the curve, and the expected monetary intervention will have an effect on the flattening of the medium-short stretch**

Demand from foreigners is continuing to set the trend on the short stretch of the curve (one day to one year), taking advantage of arbitrage opportunities in the forward MXN market (implicit domestic rates in forward markets lower than short-term local rates). These strategies have been accelerated by increasing expectations of the implementation of larger global monetary stimuli and, as a result, strengthening of the peso. During the week, the scale of the arbitrage reduced as a result of the increased demand for forwards and profit taking on the peso.

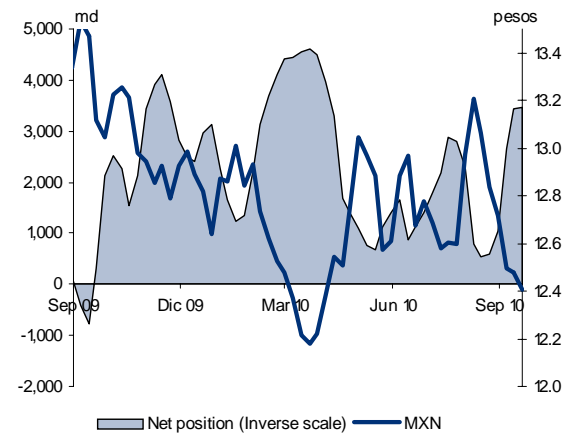
The debt curve is resisting a context of increased elevation of the curve; however, there was a slight increase in the slope during the week. We consider that the expected US monetary action in the context of a slowdown will once again have an effect on the flattening trend of the curve, particularly in the medium and short-stretches.

Chart 5  
**Spread between Cetes federal government bonds and implicit rates on the forward curve (bp)**



Source: BBVA Research with data from Bloomberg

Chart 6  
**MXN: Long Non-Trading Positions in CME (US\$mn)**



Source: BBVA Research with data from Bloomberg

# Technical Analysis

## Market Analysis

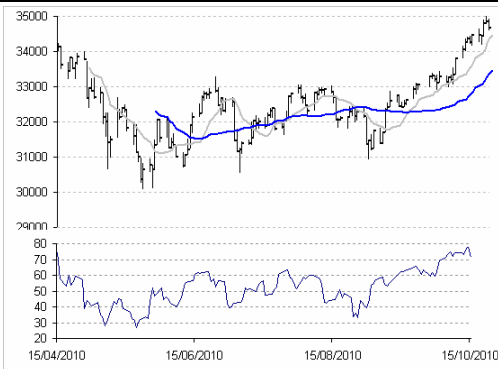
## Equity

### Technical Analysis

**Alejandro Fuentes Pérez (\*)**  
a.fuentes@bbva.bancomer.com  
5255 5621 9705

(\*) Author(s) of the report

### CPI stock market index

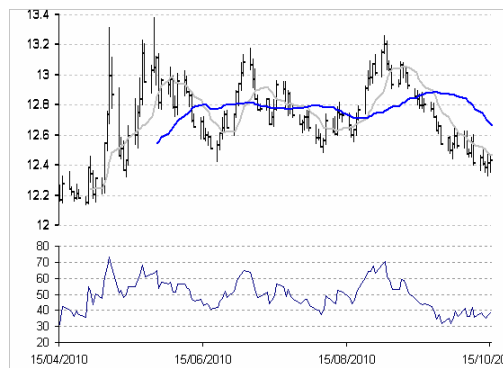


Source, BBVA, Bancomer, Bloomberg

**CPI stock market index:** The CPI continues reaching new historic highs, having approached 35,000 pts on a couple of occasions, from where it has shown day-to-day adjustments. Over-buying remains high and the spread between short-term oscillations is now up to 1,000 pts. We recommend profit taking and expect an adjustment to where the support level has become established at 33,450 pts.

**Previous recommendation:** We recommend reducing positions and forecast movement to support levels of 33,700 pts and 33,000 pts.

### MXN

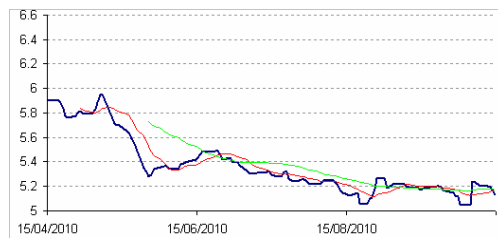


Source, BBVA, Bancomer, Bloomberg

**MXN:** The MXN has not managed to return to levels above P\$12.50, so the downward trend continues. The floor of P\$12.38 has been tested and respected, but in order to consider that there has been a change in the short-term trend, it has to break through the 10 day moving average (P\$12.46) and, in particular, P\$12.50. Support levels at P\$12.38 and P\$12.20.

**Previous recommendation:** High probability of reaching levels of P\$12.38 as the first floor and P\$12.20 as the next floor.

### 3 YEAR M BOND

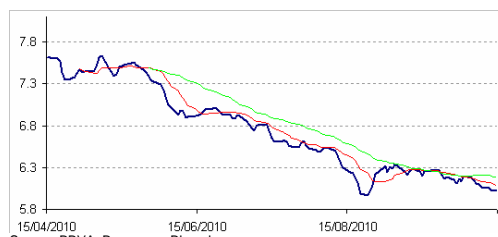


Source, BBVA, Bancomer, Bloomberg

**3 YEAR M BOND: (performance):** It has not managed to consolidate the bounce back from the previous week, and has returned to levels below the short term moving average. There is renewed risk of falling to 5.10 which would be eliminated by a rebound to above 5.20.

**Previous recommendation:** This gives a support level of 5.20 and resistance of 5.40.

### 10 YEAR M BOND



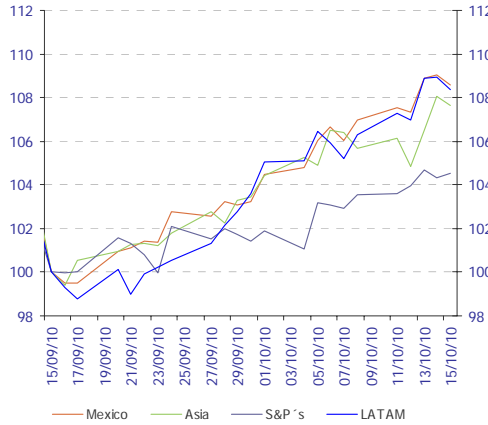
Source, BBVA, Bancomer, Bloomberg  
Source: BBVA Research with data from Bloomberg

**10 YEAR M BOND (performance):** Return to the 6.0 zone. It may begin to register a rebound from a double technical bottoming out, but we need to watch that it does not break through this floor.

**Previous recommendation:** Remains below the 10 and 30 day moving averages meaning that the trend is still negative and there is a risk of returning to the 6.0 zone.

## Markets

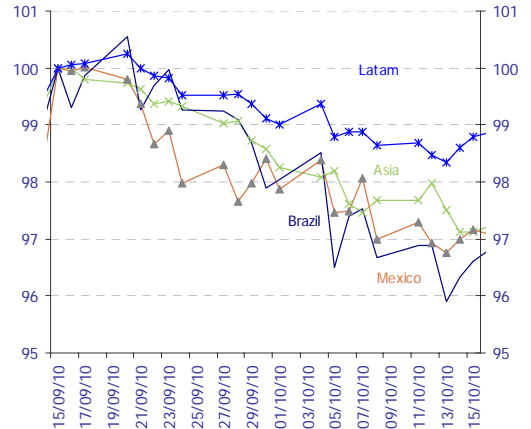
Chart 7  
**Share Markets: MSCI indexes (index Sep 15, 2010=100)**



Source: Bloomberg & BBVA Research

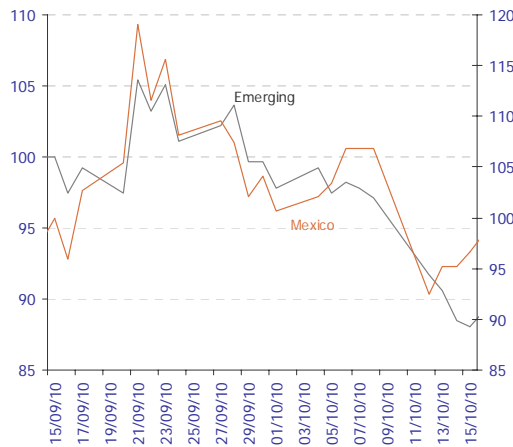
Depreciation of currencies in the region and falls in stock markets at the end of the week due to worse than expected US figures

Chart 8  
**Currencies: Exchange rates against the dollar (index Sep 15, 2010=100)**



Source: Bloomberg and BBVA Research Note: LATAM includes Argentina, Brazil, Chile, Colombia and Peru. Asia includes the Philippines, South Korea, Taiwan, Singapore, Indonesia and Thailand. Non-weighted averages.

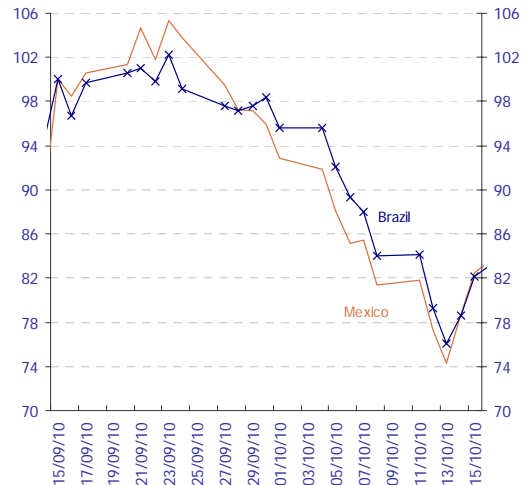
Chart 9  
**Risk: EMBI+ (index September 15, 2010=100)**



Source: Bloomberg and BBVA Research.

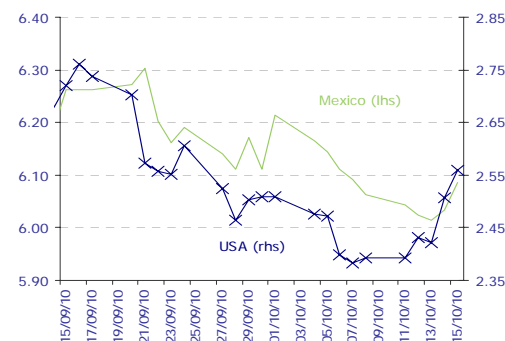
Increased risk aversion towards the end of the week.

Chart 10  
**Risk: 5-year CDS (index September 15, 2010=100)**



Source: Bloomberg and BBVA Research.

Chart 11  
**10-year interest rates\*, last month**



Source: Bloomberg and BBVA Research

Fall in demand for bonds in the face of lower uncertainty about monetary expansion.

Chart 12  
**Mexico carry-trade index (%)**

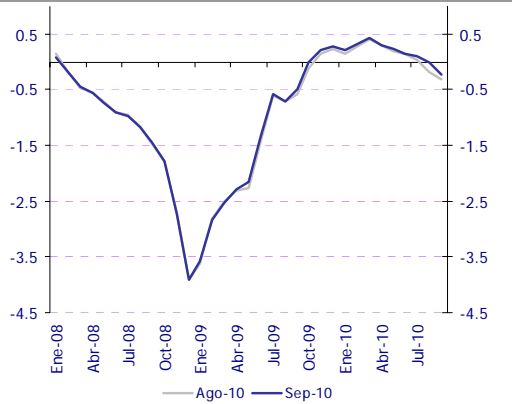


Source: Bloomberg and BBVA Research

## Economic activity, inflation, monetary conditions

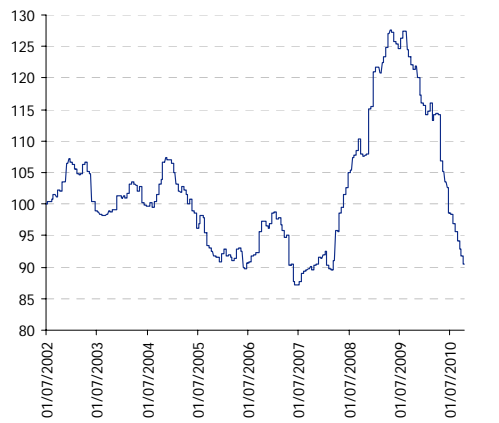
The Mexican economy is in better shape than a few months ago, but the monthly rate of recovery appears to be slowing.

Chart 13  
**Economic Cycle Indicators (Standardized)**



Source: BBVA Research with data from INEGI, AMIA and BEA. The weighted sum of 21 different indicators of economic activity, spending and expectations based on trend series.

Chart 15  
**Inflation Surprise Index (July 2002=100)**



Source: BBVA Research with data from Banxico on the monthly surveys of expectations of private sector economic specialists.

With regard to the consensus, inflation surprises remain downside

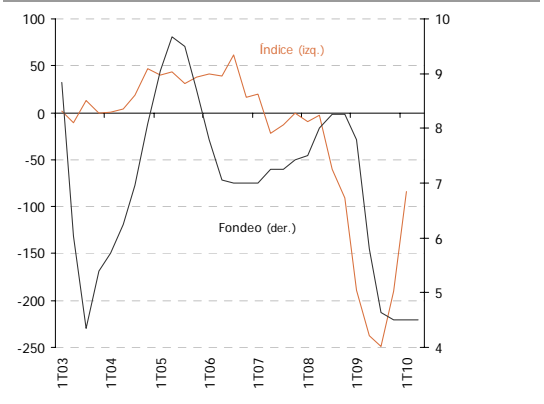
Chart 17  
**Monetary Conditions Index**



Source: BBVA Research

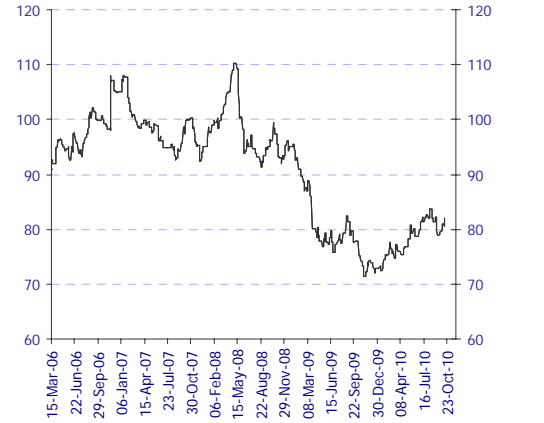
Monetary conditions are relaxed. No rush to raise monetary rates; no need to lower them

Chart 14  
**Indicator of inflationary demand pressures & bank funding rate (Standardized index & %)**



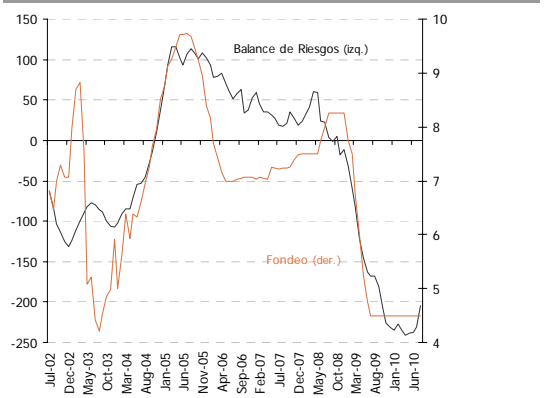
Source: BBVA Research and Banxico

Chart 16  
**Activity Surprise Index (2002=100)**



Source: BBVA Research with Bloomberg data. Difference between recorded data and the Bloomberg consensus for seven activity variables in Mexico. Standardized index. Rises (falls): positive (negative) surprises.

Chart 18  
**Balance of inflationary risks\* and bank funding rate (standardized and %; monthly av.)**



Source: BBVA Research. \* Standardized and weighted index (of inflation and economic growth) based on economic indicators of economic activity and inflation. A rise in the index points to a greater weight of inflationary risks over growth risks and thus a greater possibility of monetary restriction.

**IMPORTANT DISCLOSURES****Analyst Certification**

I, **I, Moisés Junca, Claudia Ceja, Ociel Hernández, Liliana Solís, Alejandro Fuentes, Rodrigo Ortega y Octavio Gutiérrez Engemann**, hereby certify that the views expressed in this research report accurately reflect my personal views about the mentioned corporation(s) and its (their) securities. I also certify that I have not been, am not, and will not be receiving direct or indirect compensation in exchange for any specific recommendation in this report.

Rating, target price and price history information for the companies that are the subject of this report are available at [www.bancomer.com](http://www.bancomer.com)

**Receipt of Compensation / Provision of Services current as of 10/14/10**

Management or Co- Management of Public Offering. Within the past twelve months, BBVA Bancomer, S.A., Institución de Banca Múltiple, Grupo Financiero BBVA Bancomer ("BBVA Bancomer"), and/or its affiliates, have participated as manager or co-manager in public offerings, and received compensation for these services, of the company(ies), which is(are) the subject of this report: **Actinver, Banco Interacciones, Banco Inbursa, BNP, Bimbo, Cemex, Comisión Federal de Electricidad, Corporación Interamericana de Inversiones, Chedraui, Daimler, Embotelladoras Arca, El Puerto de Liverpool, Ferrocarril Mexicano, Fonacot, GE Capital Bank, GMAC, Hipotecaria su Casita, Maxcom, Megacable, Nemak, NRF(Nissan), Paccar, Pemex, Posadas, Prudential Fiancial, Ruba, Telmex Internacional, Toyota, Urbi, VWLease.**

Investment Banking Compensation. Within the past twelve months, BBVA Bancomer, and/or its affiliates, have received compensation for investment banking, common representation and credit related services from the Company/ies, which is(are) the subject of this report: **Acciona, Aeromexico, Agropecuaria Santa Genoveva, Alsea, América Móvil, Avicola Pilgrim's Pride de Mexico, Axtel, Bancomext, Banco de Credito e Inversiones, Banorte, Cemex, Cencosud, CIE, Cintra, Colbun, Comercial Mexicana, Comisión Federal de Electricidad, Concesionaria Mexiquense, Consorcio Comex, Controladora de Farmacias, Copamex, Coppel, Corporacion Geo, Corporativo Arca, Corporación Moctezuma, Credito Inmobiliario, Daimler Chrysler de México, Dine, El puerto de Liverpool, El palacio de Hierro, Empresas Cablevisión, Endesa (Chile), Facileasing, Factoring Corporativo, Farmacias Benavides, FCC, Femsa, Ferrosur, Fomento de Infraestructura Turistica Cancun, GEO, Gruma, Grupo Alfa, Grupo Ara, Grupo Brescia, Grupo Bimbo, Grupo Carso, Grupo Casa Saba, Grupo Cementos de Chihuahua (GCC), GAP, Grupo Comercial Chedraui, Grupo Collado, Grupo Comercial Gomo, Grupo Dermat, Grupo Elektra, Grupo Famsa, Grupo Femsa, Grupo Financiero Inbursa, Grupo R, Grupo Scotiabank, Grupo Herdez, Grupo ICA, Grupo La Moderna, GMAC, Grupo Maseca, Grupo México, Grupo Posadas, Grupo R, Grupo Sanborns, Grupo TMM, Grupo Videomax, Grupo Xignux, Hilasal Mexicana, Homex, HSBC, Holcim (Apasco), Hylsamex, Imsa/Tarida/Ternium, Industrias Bachoco, Hipotecaria Casa Mexicana, Hipotecaria su Casita, Industrias Aluprint, Industrias CH, Industrias Peñoles, Inmobiliaria Ruba, Interceramic, Kansas City Southern de México, Kaupthing Bank, Kimberly Clark Mexico, Lamosa, Liverpool, Mabe, Manufacturas Kaltex, Medica Sur, Megacable, Mexichem, Molymet, Municipio de Aguascalientes, Nadro, Nafin, NRF Mexico, Nemak, OHL, Paccar, Pasa, Pemex, Petrotemex, Pimsa, Plavicom, Prolec GE, Ruba, Sare, Sears, Sigma, Simec, Scotia Bank Inverlat, Techint, Telefónica CTC, Telefónica Móviles, Telint, Tenaris, Toyota, Urbi, Value, Volcan Cia Minera, VWLease.**

**Expected Investment Banking and services Compensation.** In the next three months, BBVA Bancomer, and/or any of its affiliates, expects to receive or intends to seek compensation for investment banking, common representation and credit related services from the company (ies) discussed in this report.

BBVA Bancomer acts as market maker/specialist in: **MexDer Contrato de Futuros (Dólar de Estados Unidos de América (DEUA), TIIE de 28 días (TE28), Swap de TIIE, CETES de 91 días (CE91)), Bonos M, Bonos M3, Bonos M10, Índice de Precios y Cotizaciones de la BMV (IPC), Contrato de Opciones (IPC), Acciones América Móvil, Cemex, CPO, Femsa UBD, Gcarso A1, Telmex L).**

BBVA acts as market maker/specialist in Latibex: **Alfa, AMX, Corporación Geo, Grupo Modelo, ICA, Sare, Telmex.**

**BBVA Bancomer**, is recognized by Mexico's Finance Ministry as a market improver and acts as a market maker/specialists in MEXDER, Mercado Mexicano de Derivados.

**Ownership Positions**

**BBVA Bancomer**, and/or its affiliates holds, directly or indirectly, at least 1 % of the equity capital of the following company/ies whose shares are open to negotiation in organized markets and which is(are) the subject of this report: **BOLSA, CEMEX VENEZUELA, GRUPO VIDEOVISA, PASA.**

**BBVA Bancomer**, and/or its affiliates hold(s), directly or indirectly; as of the end of the last quarter, at least a 10 % of its investment portfolio, or 10% of the amount issued, of the securities or underlying investments issued by the companies which is(are) the subject of this report: **AXTEL, ORGANIZACION SORIANA.**

#### Other Disclosures

To the best of BBVA Bancomer's knowledge, a Member of its Board, its CEO or Senior Manager holding a direct reporting position to BBVA Bancomer's CEO holds a similar position in any of the following company/ies which is(are) the subject of this report: **Alfa, Asea, Amx, Asur, Bimbo, CMR, Dine, Femsa, GAP, Gmodelo, Grupo financiero Inbursa, Grupo Carso, Grupo Posadas, Hogar, Invex, Kof, Kuo, Liverpool, Maseca, Oma, Peñoles, Sanborns Hermanos, Sears Roebuck, Telecom, Telefónica Móviles México, Telmex, Tenaris, Tlevisa, Urbi, Vitro.**

#### Additional Information and Disclaimer

##### Ratings and Price Targets

As of September 30, 2010, for the whole universe of companies which BBVA Bancomer, has under coverage there are **59%** Buy ratings (including "Buy" and "Outperform"), **2%** Neutral ratings and **39%** Sell ratings (including "Sell" and "Underperform"). BBVA Bancomer or any of its affiliates has rendered Investment Banking services or participated as manager and/or co-manager in public offerings in **56%** of the Buy ratings, **11%** of the Neutral ratings and in **33%** of the Sell ratings.

Ratings are set on a six-month or year-end basis against the relevant benchmark. BBVA Bancomer issues three equity recommendations: **Outperform:** Upside potential of more than 5% vs. the market. **Neutral:** Stock is expected to perform in line with the market (+/-5%). **Underperform:** Expected downside of at least 5% vs. the market:

Recommendations reflect the stock's expected performance vs the market, within a specified period. This performance may be explained by the fundamental stock valuation method and other factors. The fundamental stock valuation method used by BBVA Bancomer S.A., is based on a combination of one or more generally accepted financial analysis methodologies, which may include, multiples, discounted cash flows, sum of parts or any other methodology that applies to the particular case. Notwithstanding other factors include newsflows, benefit timing, M & A's and market's appetite in a given sector. These factors can lead to a recommendation contrary to that indicated by the simple fundamental valuation results and its comparison with direct quotations.

This document and the information, opinions, estimates and recommendations expressed herein, have been prepared by BBVA Global Markets Research an affiliate of Banco Bilbao Vizcaya Argentaria, S.A. (BBVA) and/or BBVA Bancomer, to provide their or its customers with general information as of the date of the report and are subject to changes without prior notice. BBVA Bancomer is not liable for giving notice of such changes or for updating the contents hereof. This document and its contents do not constitute an offer, invitation or solicitation to purchase or subscribe to any securities or other instruments, or to undertake or divest investments. Neither shall this document nor its contents form the basis of any contract, commitment or decision of any kind. For more information please contact the persons included in the directory of this document.

The determination of a price target does not imply any warranty that it will be attained. For a discussion of the risks associated with the attainment of price targets, which depend on intrinsic and extrinsic factors that affect both the performance and trends prevailing in the market on which the recommended securities is traded and/or offered, please refer to our recently published documents, which are available via e-mail, contact our analysts or visit our internet site [www.bancomer.com](http://www.bancomer.com).

Investors who have access to this document should be aware that the securities, instruments or investments to which it refers may not be appropriate for them due to their specific investment goal, financial position or risk profile, for these have not been taken into account in the preparation of this report. Therefore, investors should make their own investment decisions considering the said circumstances and obtaining such specialized advice as may be necessary.

The contents of this document are based upon information available to the public that has been obtained from sources considered to be reliable. However, such information has not been independently verified by BBVA Bancomer, and therefore no warranty, either express or implicit, is given regarding its accuracy, integrity or correctness. BBVA Bancomer, accepts no liability of any type for any direct or indirect losses arising from the use of the document or its contents.

Investors should note that the past performance of securities or instruments or the historical results of investments do not guarantee future performance. The market prices of securities or instruments or the results of investments could fluctuate against the interests of investors. Investors should be aware that they could even face a loss of their investment.



Transactions in futures, options or high-yield securities can involve high risk and are not appropriate for every investor. Indeed, in the case of some investments, the potential losses may exceed the amount of the initial investment; in such circumstance, investors may be required to pay more money to support those losses. Thus, before undertaking any transaction with these instruments, investors should be aware of their characteristics, as well as the rights, liabilities and risks associated with these securities and their underlying investments. Investors should also be aware that secondary markets for the said instruments may be limited or may not exist.

BBVA Bancomer, or any of its affiliates, as well as their respective executives and employees, may have a position in any of the securities or instruments referred to, directly or indirectly, in this document, or in any other related thereto; they may trade for their own account or for third-party account in those securities, provide consulting or other services to the issuer of the aforementioned securities or instruments or to companies related thereto or to their shareholders, executives or employees, or may have interests or perform transactions in those securities or instruments or related investments before or after the publication of this report, to the extent permitted by the applicable law.

BBVA Bancomer or any of its affiliates' salespeople, traders, and other professionals may provide oral or written market commentary or trading strategies to its clients that reflect opinions that are contrary to the opinions expressed herein. Furthermore, BBVA Bancomer or any of its affiliates' proprietary trading and investment businesses may make investment decisions that are inconsistent with the recommendations expressed herein.

No part of this document may be (i) copied, photocopied or duplicated by any other form or means (ii); redistributed or forwarded; or (iii) quoted, without the prior written consent of BBVA Bancomer. No part of this report may be copied, conveyed, distributed or furnished to any person or entity in any country (or persons or entities in the same) in which its distribution is prohibited by law. Failure to comply with these restrictions may breach the laws of the relevant jurisdiction.

This document is provided in the United Kingdom solely to those persons to whom it may be addressed according to the Financial Services and Markets Act 2000 (Financial Promotion) Order 2001 and it is not to be directly or indirectly delivered to or distributed among any other type of persons or entities. In particular, this document is only aimed at and can be delivered to the following persons or entities (i) those outside the United Kingdom (ii) those with expertise regarding investments as mentioned under Section 19(5) of Order 2001, (iii) high net-worth entities; and (iv) any other person or entity under Section 49(1) of Order 2001 to whom the contents hereof can be legally revealed.

The remuneration system concerning the analyst/s author/s of this report is based on multiple criteria, including the results obtained by BBVA Bancomer and by BBVA Group in the fiscal year, which, in turn, include the results generated by the investment banking business, common representation or credit related services; nevertheless, they do not receive any remuneration based on revenues from the mentioned areas or a specific transaction in investment banking, common representation or credit related services.

The information contained in this document should be taken only a general guide on matters that may be of interest. The application and impact of the laws may vary substantially depending on specific circumstances. Changes in regulations and the risks inherent in electronic communication may cause delays, omissions, or inaccuracy in the information contained in this site. Accordingly, the information contained in the site is supplied on the understanding that the authors and editors do not hereby intend to supply any form of consulting, legal, accounting or other advice. As such, it should not be considered a substitute for the direct advice provided by accounting and fiscal advisors or other competent consultants.

All images and texts and texts are the property of BBVA Bancomer and may not be downloaded from the Internet, distributed, stored, re-used, re-transmitted, modified or used in any way, except as specified in this document, without the express written consent of BBVA Bancomer. BBVA Bancomer reserves all intellectual property rights to the fullest extent of the law. None of the information contained herein may be interpreted as a concession by implication, exclusion or any other means, of any patent or brand of BBVA Bancomer or of any third party. Nothing established herein should be interpreted as a concession of any license or right under any BBVA Bancomer copyright.

BBVA Bancomer, as well as its executives and employees have adopted the Código de Conducta de Grupo Financiero BBVA Bancomer, which is available in our internet site [www.bancomer.com](http://www.bancomer.com).

BBVA Bancomer is regulated by the Comisión Nacional Bancaria y de Valores.

BBVA Bancomer as well as other entities in the BBVA Group that are not members of the FINRA (Financial Industry Regulatory Authority), are not subject to the rules of disclosure affecting such members.

**This material is being distributed into the United States in reliance on an exemption from broker-dealer registration under Rule 15a-6 of the Rules under the Securities Exchange Act of 1934. Any trades in the securities discussed in this report must be effected through a U.S. registered broker/dealer as we are not authorized to accept any order to effect trades in any security discussed in this report within the U.S.**