

# Weekly Watch

Mexico

## Next week...

Employment jumps with the census revision but the income level pattern remains

The results of the National Survey of Employment and Occupation (ENOE) with absolute figures and up to 1Q11 were updated recently. The data published quarterly by the ENOE between 1Q05 and 4Q10 take as a basis expansion factors adjusted to official demographic forecasts from the National Population Council (CONAPO) based on definitive results from the 2nd General Population and Housing Survey 2005. In this sense, the data for 1Q11 are not completely comparable with previous data since the latter are based on definitive results from the Population and Housing Census 2010. One of the main differences between the information sources is that the ENOE from the 1Q10 forecast a population of 108.7 million Mexicans while the estimated population in the 1Q11 is 113.2 million. In the same way, the total number of those in employment jumps from 43.8 million in 4Q10 to 45.4 million in 1Q11. This jump occurs in the inter-annual rates as the prior data are not revised in line with the new census data.

With this, the information in the ENOE 1Q11 continue to be very useful to uncover how employment is spread by income level, conditions on underemployment or output sectors, something which a priori seems not to have changed much with the new Census.  
(continued on next page)

July 29, 2011

### Economic Analysis

J. Julián Cubero  
juan.cubero@bbva.bancomer.com

Cecilia Posadas  
c.posadas@bbva.bancomer.com

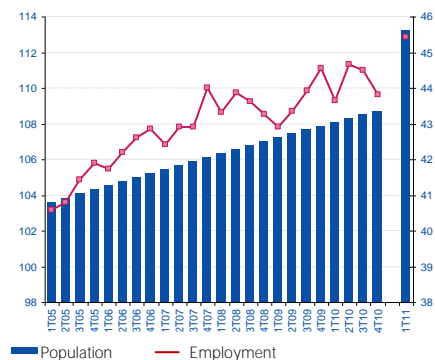
### Market Analysis

Octavio Gutiérrez Engemann  
o.gutierrez3@bbva.bancomer.com

## The international situation marks market trends

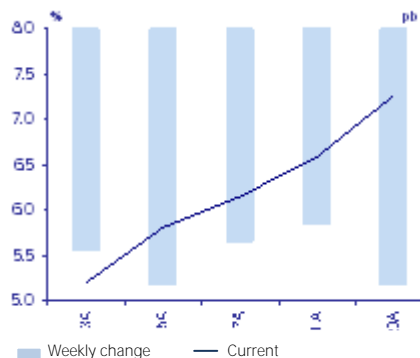
The appetite for safe-haven assets saw significant increases in the face of the current fiscal risks in Europe and the US and economic data suggesting a lower-than-expected bounce in the cycle. Beyond the risks due to the lack of positive solutions in fiscal matters in the US, markets are blocked with the economic risks it represents, structural weakness (cyclical and fiscal) in Europe and uncertainty as to the size of cyclical recovery in coming months. Next week markets will be fixed on the US: the debt ceiling (approved or not and with what conditions) and economic data (manufacturing and employment). As a result, the local curve extends its rally and the peso fluctuates in a wide trading range.

Chart 1  
Total Population and Employment  
(millions of persons)



Source: BBVA Research with INEGI data

Chart 2  
M BOND Curve and weekly change



Source: BBVA Research with data from Bloomberg

## Calendar: Indicators

(continued from previous page)

### Economic Analysis

Cecilia Posadas  
 c.posadas@bbva.bancomer.com

J. Julián Cubero  
 juan.cubero@bbva.bancomer.com

In this sense, employment's high contribution to growth remains in segments with lower income, between 0 and 2 minimum wage as well as between 2 and 5 minimum wage. In turn, according to this information, jobs with wages above 5 MW have not positively contributed since 2Q07, certainly something striking. It should be stated here that, in turn, a growing number of workers responding to "unspecified" can be seen regarding their income level. If there were some type of bias in the survey leading to employees with higher incomes not specifying them, the evolution of total labor income would be under-represented.

In any case, what does remain is the predominant role of lower incomes in increased employment, meaning a weakness for private consumption.

### Consumer Confidence (July, July 4)

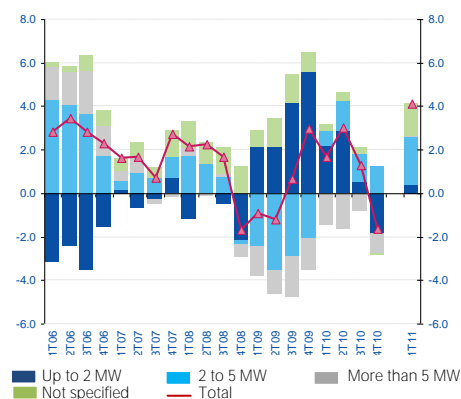
Forecast: 2% m/m (93.7)

Consensus: N.A.

Previous: 1.7% m/m (91.9)

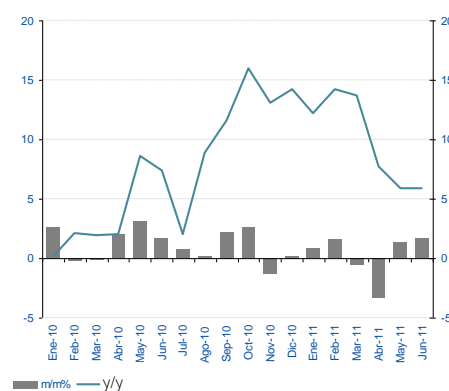
We estimate that the continuous expansion in private formal employment will provide optimism in consumer confidence. It will especially important to know the sub-index of the possibility of purchasing durable goods. It should be stated that according to retail establishments, durable goods still have a major lag with regard to pre-crisis levels. Therefore, good "possibility..." data will be a very good sign on future movements.

Chart 3  
 Employment by income level (% change y/y and contributions)



Source: BBVA Research with Banxico data

Chart 4  
 Consumer Confidence Index (% change y/y and m/m)



Source: BBVA Research and INEGI

## Markets

### Rally extends at the end of the week

In line with the appetite for safe-haven assets and the UST curve rally extending, the MBonds curve closed with major gains over the week. Yields fell 12bp on average. Over the week, the 5, 10 and 20 year fell 30bp, 23bp and 30bp respectively. The rally on the latter from last month, which intensified over the last week especially in long tranches, was anticipated with the favorable domestic inflationary risk balance, the expected monetary pause being extended over more months and contained pressures in the short-term on UST. The M BOND 2021 reached its 6.6% target (with a stop loss at 7.3%). We extend the target 15bp to 6.45%: the factors behind this: 1) summer economic data will unlikely reverse the uncertainty on the strength of the cyclical recovery until the end of the year; 2) the global situation (aversion in Europe and the UST with limited short-term pressure) will continue supporting foreign capital flows onto the local market; 3) the risks of domestic slowdown are present meaning the likelihood the market continues to delay the start of the restrictive cycle toward our scenario (June 2012) is increasing.

### A wide range remains in place for the USDMXN

Last week, the global currency market's performance was set by different factors, mainly in the US: the debate around the debt ceiling in Congress and the flow of economic data which, mostly, continued to show moderate growth. In turn, although the fiscal situation in the European periphery nations fell into the background due to the agreements announced the previous week, some uncertainty remained which led to higher risk aversion. In this context, the USD saw volatility against G10 and emerging currencies and, on Thursday, the DXY index saw slight appreciation over the week of 0.1%, although GDP indicators at the end of the week led to a general depreciation. The MXN fell around 0.8% however we highlight that more than a response to fiscal factors in the US, the reaction was based on uncertainty with regard to the US economic cycle. With this, we cannot rule out that the currency remains in the high part of the 11.60-11.80 range over the coming weeks.

#### Market Analysis

*Macro LatAm Strategy*  
 Octavio Gutiérrez Engelman  
 o.gutierrez3@bbva.bancomer.com  
 +5255 5621 9245

*LatAm Equity*  
 Chief Analyst  
 Rodrigo Ortega  
 r.ortega@bbva.bancomer.com  
 +52 55 5621 9701

*Latam Credit*  
 Mexico  
 Chief Analyst  
 Edgar Cruz  
 edgar.cruz@bbva.bancomer.com  
 +52 55 5621 9774

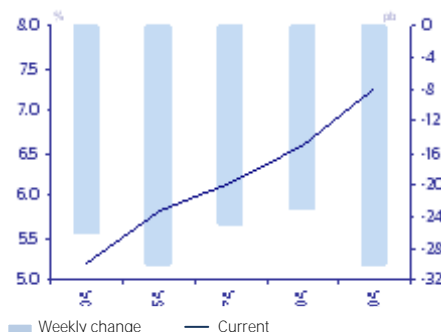
*Fixed-Income Analysis*  
 Mexico/Brazil  
 Chief Strategist  
 Ociel Hernández  
 o.hernandez@bbva.bancomer.com  
 +5255 5621 9616

Liliana Solís  
 liliana.solis@bbva.bancomer.com  
 +5255 5621 9877

*FX Mexico // Brazil*  
 Claudia Ceja  
 claudia.ceja@bbva.bancomer.com  
 +5255 5621 9715

*Technical Analysis*  
 Alejandro Fuentes  
 a.fuentes@bbva.bancomer.com  
 +52 55 5621 9975

Chart 5  
 M BOND Curve and weekly change



Source: BBVA Research with data from Bloomberg

Chart 6  
 Relative performance of Latin American currencies  
 (Jan 1=100)



Source: BBVA Research with data from Bloomberg

## Market Analysis Equities

### Technical Analysis

Alejandro Fuentes Pérez (\*)  
 afuentes@bbva.bancomer.com  
 + 5255 5621 9705

(\*) Writer(s) of the report

## Technical Analysis IPC Stock Market Index



IPC: . The increased investment in equity at the Afores has created positive technical signals in the short-term for the IPC since it is driving the market above the 30-day rolling average (35,963pts) with the highest volume traded in the year (769mn shares traded on July 27 vs. the daily average of 255mn shares over the year). With this break, the IPC should come in at its next resistance level of 36,600pts, where the 200-day rolling average sits. We see the first support at the 10-day rolling average over 35,660pts.

Previous rec.: In order to again consider short-term risk, the IPC would have to come in below the intra-day minimum it hit in the week (35,100pts), opening up a pathway toward June's minimum ranges between 34,600 and 34,800pts.

Source: BBVA, Bancomer, Bloomberg

## MXN

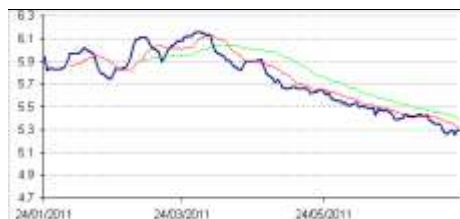


The dollar bounces in the week from the P\$11.60 support to reach an intra-day maximum at the P\$11.80 resistance. We believe that it could, at this point, start a return to the floor zone due to movement in the oscillating indicators. On the other hand, the break of P\$11.80 could place the next resistance at P\$11.90 and P\$12.00.

Previous rec.: We cannot see this floor being broken and should expect a bounce toward the P\$11.70 / P\$11.75 level.

Source: BBVA, Bancomer, Bloomberg

## 3Y M BOND

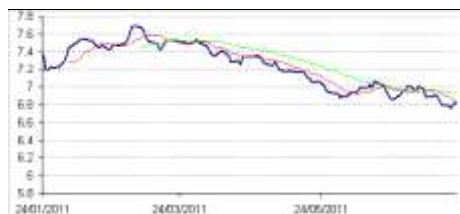


3Y M BOND: (yield): Although oscillating indicators are in oversell, it has not managed to come out of the downward trend it has traded in since April. Resistance at 5.31% and 5.39%. Support in the lower part of the negative range at 5.2% and 5.1%.

Previous rec.: It may carry this decline toward 5.26%.

Source: BBVA, Bancomer, Bloomberg

## 10Y M BOND



10Y M BOND (yield): Maintaining trading in the negative range. Resistances at 6.8%, 6.93% and 7.01%. Only above the latter can we consider a change in the trend. Downward, the next support is 6.66%.

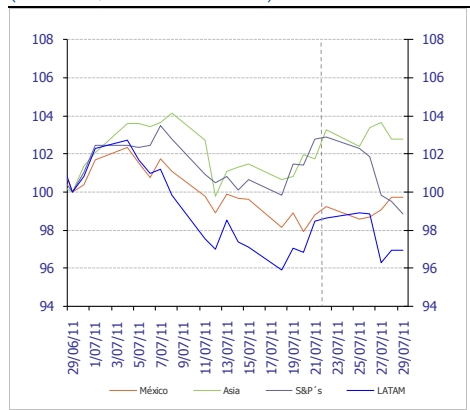
Previous rec.: new yearly minimum with chances of still seeking the 6.74% zone.

Source: BBVA, Bancomer, Bloomberg

### Markets

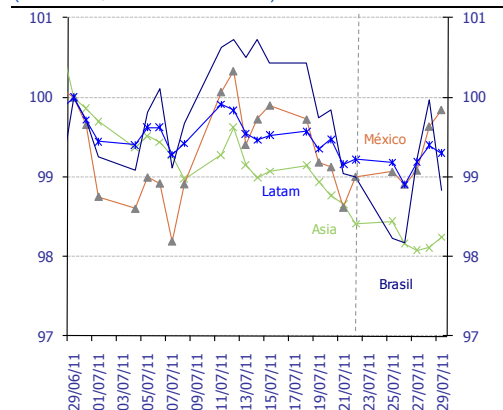
Changes to the Afores investment system help the Mexican stock market to detach from the US and this see a week with gains. Depreciation in the peso due to US growth data below forecasts and uncertainty over the debt ceiling negotiations.

Chart 7  
Stock Markets: MSCI Indices  
(June 29, 2011 index=100)



Source: Bloomberg & BBVA Research

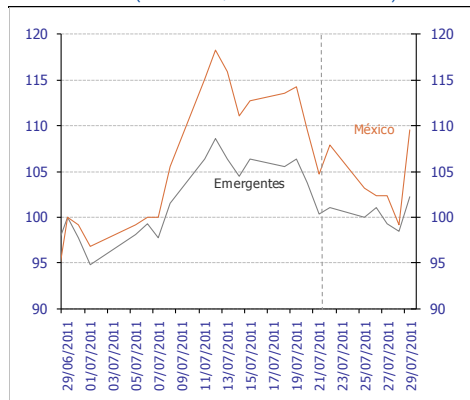
Chart 8  
Foreign exchange: dollar exchange rates  
(June 29, 2011 index=100)



Source: Bloomberg and BBVA Research. Note: LATAM includes Argentina, Brazil, Chile, Colombia and Peru. Asia includes the Philippines, South Korea, Taiwan, Singapore, Indonesia and Thailand. Non-weighted averages

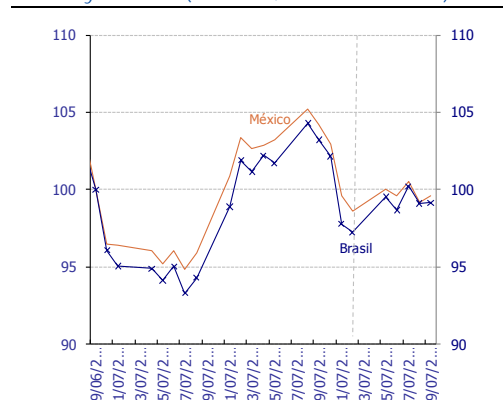
Increased risk aversion as the deadline to approve the increased debt ceiling in the US closes in and in the face of Moody's announcing the Spanish rating is to come under review

Chart 9  
Risk: EMBI+ (June 29, 2011 index=100)



Source: Bloomberg & BBVA Research

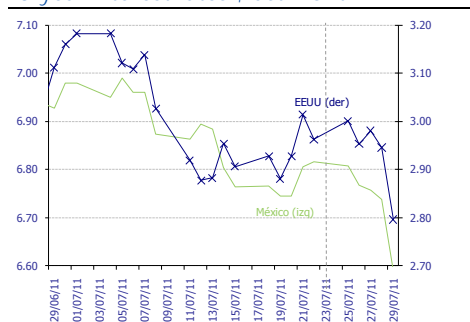
Chart 10  
Risk: 5-year CDS (June 29, 2011 index=100)



Source: Bloomberg & BBVA Research

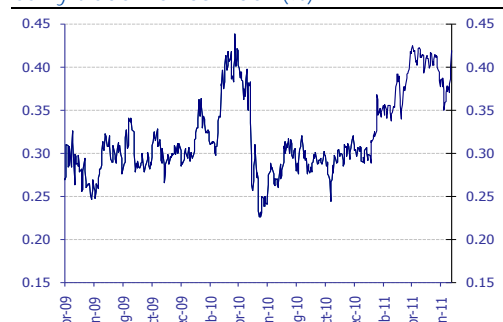
Fall in rates in the USA and Mexico due to increased risk aversion.

Chart 11  
10-year interest rates\*, last month



Source: Bloomberg & BBVA Research

Chart 12  
Carry-trade Mexico index (%)

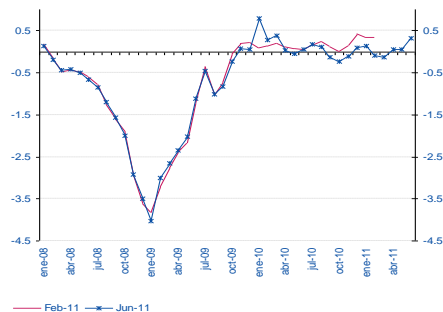


Source: BBVA Research with data from Bloomberg

### Activity, inflation, monetary conditions

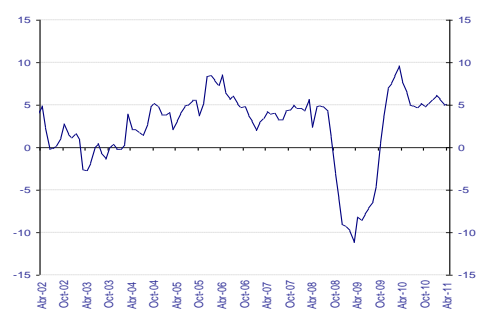
For the time being, recent output data point to moderation in April being temporary and linked to industrial output

Chart 13  
BBVA Research Synthetic Activity Indicator for the Mexican economy



Source: BBVA Research with data from INEGI, AMIA and BEA  
Weighted sum of 21 different indicators of activity, expenditure and expectation, based on trend series.

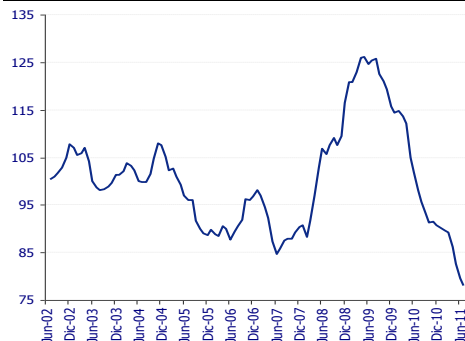
Chart 14  
Advance Indicator of Activity (% change y/y)



Source: INEGI

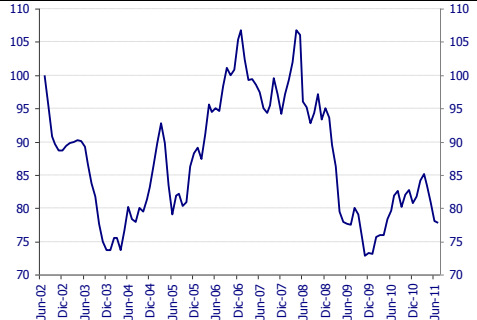
Recent inflationary surprises have been downward, while those concerning economic activity have been mixed.

Chart 15  
Inflation Surprise Index (July 2002=100)



Source: BBVA Research with data from Banxico from the monthly surveys on the expectations of economic specialists in the private sector.

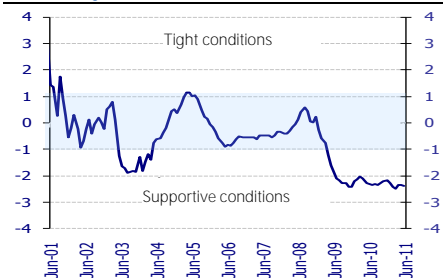
Chart 16  
Activity Surprise Index (2002=100)



Source: BBVA Research with Bloomberg data. Difference between recorded data and the Bloomberg consensus for seven activity variables in Mexico. Standardized index. Rises (falls): positive (negative) surprises.

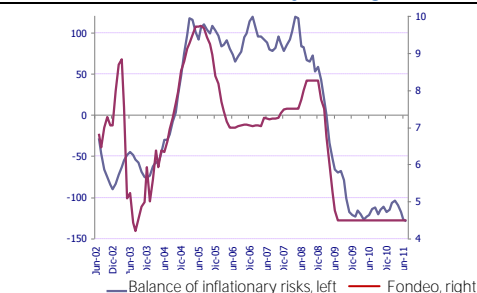
The monetary conditions have not changed and continue to be loose, with this loosening in fact increasing slightly in recent days.

Chart 17  
Monetary Conditions Index



Source: BBVA Research

Chart 18  
Balance of Inflationary Risks\* and Lending Rate (standardized and %; monthly averages)



Source: BBVA Research. \*Standardized, weighted index (between inflation and economic growth); uses economic indicators for activity and inflation. A rise in the index points to a greater weight of inflationary risks over growth risks and thus a greater likelihood of monetary restriction

## IMPORTANT DISCLOSURES

**Analysts' Certification**

I, Octavio Gutiérrez, Rodrigo Ortega, Edgar Cruz, Claudia Ceja, Ociel Hernández, Liliana Solis and Alejandro Fuentes Pérez: hereby certify that the views expressed in this research report accurately reflect my personal views about the mentioned corporation(s) and its (their) securities. I also certify that I have not been, am not, and will not be receiving direct or indirect compensation in exchange for any specific recommendation in this report..

Rating, target price and price history information for the companies that are the subject of this report are available at [www.bancomer.com](http://www.bancomer.com)

**Receipt of Compensation / Provision of Services current as of 7/15/11**

Management or Co- Management of Public Offering. Within the past twelve months, BBVA Bancomer, S.A., Institución de Banca Múltiple, Grupo Financiero BBVA Bancomer ("BBVA Bancomer"), and/or its affiliates, have participated as manager or co-manager in public offerings, and received compensation for these services, of the company(ies), which is(are) the subject of this report: Actinver, Banco Interacciones, Banco Inbursa, BNP, Bimbo, Caterpillar Credito, Cemex, Comisión Federal de Electricidad, Corporación Interamericana de Inversiones, Chedraui, Daimler, Embotelladoras Arca, El Puerto de Liverpool, Ferrocarril Mexicano, Fonacot, GE Capital Bank, General Electric, GMAC, Hipotecaria su Casita, HSBC, Maxcom, Megacable, Nemak, NRF(Nissan), OHL, Paccar, Pemex, Posadas, Prudential Fiancial, Ruba, Telmex Internacional, Telefónica Móviles México, Toyota, Urbi, VWLease.

Investment Banking Compensation. Within the past twelve months, BBVA Bancomer, and/or its affiliates, have received compensation for investment banking, common representation and credit related services from the Company/ies, which is(are) the subject of this report: Acciona, Aeromexico, Agropecuaria Santa Genoveva, Alsea, América Móvil, Asur, Avicola Pilgrim´s Pride de Mexico, Axtel, Bancomext, Banco de Credito e Inversiones, Banorte, BMV, Cemex, Cencosud, CIE, Cintra, Colbun, Comercial Mexicana, Comisión Federal de Electricidad, Concesionaria Mexiquense, Consorcio Comex, CAF, Controladora de Farmacias, Copamex, Coppel, Corporación Geo, Corporativo Arca, Corporación Moctezuma, Credito Inmobiliario, Daimler Chrysler de México, Dine, El palacio de Hierro, Elementia, Empresas Cablevisión, Endesa (Chile), Facileasing, Factoring Corporativo, Farmacias Benavides, FCC, Femsa, Ferrosur, Fomento de Infraestructura Turistica Cancun, Gas Natural Mexico, GEO, Gruma, Grupo Alfa, Grupo Ara, Grupo Brescia, Grupo Bimbo, Grupo Carso, Grupo Casa Saba, Grupo Cementos de Chihuahua (GCC), GAP, Grupo Comercial Chedraui, Grupo Collado, Grupo Comercial Gomo, Grupo Dermat, Grupo Elektra, Grupo Famsa, Grupo Femsa, Ford Credit Mexico, Grupo Financiero Inbursa, Grupo R, Grupo Scotiabank, Grupo Herdez, Grupo ICA, Grupo La Moderna, GMAC, Grupo Maseca, Grupo México, Grupo Posadas, Grupo R, Grupo Sanborns, Grupo TMM, Grupo Videomax, Grupo Xignux, Hilasal Mexicana, Homex, HSBC, Holcim (Apasco), Hylsamex, Imsa/Tarida/Ternium, Industrias Bachoco, Hipotecaria Casa Mexicana, Hipotecaria su Casita, ICA, Industrias Aluprint, Industrias CH, Industrias Peñoles, Inmobiliaria Ruba, Inter Ceramic, Kansas City Southern de México, Kaupthing Bank, Kimberly Clark México, Lamosa, Liverpool, Mabe, Manufacturas Kaltex, Medica Sur, Megacable, Mexichem, Minera los Pelambres, Molymet, Municipio de Aguascalientes, Nadro, Nafin, NRF México, Nemak, OHL, Paccar, Pasa, Pemex, Petrotex, Pimsa, Plavicom, Prolec GE, Ruba, Sare, Sears, Sigma, Simec, Scotia Bank Inverlat, Techint, Telefónica CTC, Telefónica Móviles, Telint, Tenaris, Toyota, Urbi, Value, Volcan Cia Minera, VWLease.

Expected Investment Banking and services Compensation. In the next three months, BBVA Bancomer, and/or any of its affiliates, expects to receive or intends to seek compensation for investment banking, common representation and credit related services from the company (ies) discussed in this report.

BBVA Bancomer acts as market maker/specialist in: MexDer Contrato de Futuros (Dólar de Estados Unidos de América (DEUA), TIIE de 28 días (TE28), Swap de TIIE, CETES de 91 días (CE91)), Bonos M, Bonos M3, Bonos M10, Índice de Precios y Cotizaciones de la BMV (IPC), Contrato de Opciones (IPC, Acciones América Móvil, Cemex, CPO, Femsa UBD, Gcarso A1, Telmex L), Udibonos.

BBVA acts as market maker/specialist in Latibex: Alfa, AMX, Corporación Geo, Grupo Modelo, ICA, Sare, Telmex.

BBVA Bancomer, is recognized by Mexico´s Finance Ministry as a market improver and acts as a market maker/specialists in MEXDER, Mercado Mexicano de Derivados.



---

## Ownership Positions

BBVA Bancomer, and/or its affiliates holds, directly or indirectly, at least 1 % of the equity capital of the following company/ies whose shares are open to negotiation in organized markets and which is(are) the subject of this report: BOLSA, CEMEX VENEZUELA, GAP, GRUPO TELEVISA, GRUPO VIDEOVISA, MAXCOM TELECOMUNICACIONES, PASA.

BBVA Bancomer, and/or its affiliates hold(s), directly or indirectly; as of the end of the last quarter, at least a 10 % of it's investment portfolio, or 10% of the amount issued, of the securities or underlying investments issued by the companies which is(are) the subject of this report: AXTEL.

---

## Other Disclosures

To the best of BBVA Bancomer's knowledge, a Member of it's Board, it's CEO or Senior Manager holding a direct reporting position to BBVA Bancomer's CEO holds a similar position in any of the following company/ies which is(are) the subject of this report: Alfa, Alsea, Amx, Asur, Bimbo, CMR, Dine, Femsa, GAP, Gmodelo, Grupo financiero Inbursa, Grupo Carso, Grupo Posadas, Hogar, Invex, Kof, Kuo, Liverpool, Maseca, Oma, Peñoles, Sanborns Hermanos, Sears Roebuck, Telecom, Telefónica Móviles México, Telmex, Tenaris, Tlevisa, Urbi, Vitro.

---

## Additional Information and Disclaimer

### Ratings and Price Targets

As of March 31, 2011, for the whole universe of companies which BBVA Bancomer, has under coverage there are 53% Buy ratings (including "Buy" and "Outperform"), 4% Neutral ratings and 43% Sell ratings (including "Sell" and "Underperform"). BBVA Bancomer or any of its affiliates has rendered Investment Banking services or participated as manager and/or co-manager in public offerings in 57% of the Buy ratings, 14% of the Neutral ratings and in 29% of the Sell ratings.

Ratings are set on a six-month or year-end basis against the relevant benchmark. BBVA Bancomer issues three equity recommendations: Outperform: Upside potential of more than 5% vs. the market. Neutral: Stock is expected to perform in line with the market (+/-5%). Underperform: Expected downside of at least 5% vs. the market:

Recommendations reflect the stock's expected performance vs the market, within a specified period. This performance may be explained by the fundamental stock valuation method and other factors. The fundamental stock valuation method used by BBVA Bancomer S.A., is based on a combination of one or more generally accepted financial analysis methodologies, which may include, multiples, discounted cash flows, sum of parts or any other methodology that applies to the particular case. Notwithstanding other factors include newsflows, benefit timing, M & A's and market's appetite in a given sector. These factors can lead to a recommendation contrary to that indicated by the simple fundamental valuation results and its comparison with direct quotations.

This document and the information, opinions, estimates and recommendations expressed herein, have been prepared by BBVA Global Markets Research an affiliate of Banco Bilbao Vizcaya Argentaria, S.A. (BBVA) and/or BBVA Bancomer, to provide their or its customers with general information as of the date of the report and are subject to changes without prior notice. BBVA Bancomer is not liable for giving notice of such changes or for updating the contents hereof. This document and its contents do not constitute an offer, invitation or solicitation to purchase or subscribe to any securities or other instruments, or to undertake or divest investments. Neither shall this document nor its contents form the basis of any contract, commitment or decision of any kind. For more information please contact the persons included in the directory of this document.

The determination of a price target does not imply any warranty that it will be attained. For a discussion of the risks associated with the attainment of price targets, which depend on intrinsic and extrinsic factors that affect both the performance and trends prevailing in the market on which the recommended securities is traded and/or offered, please refer to our recently published documents, which are available via e-mail, contact our analysts or visit our internet site [www.bancomer.com](http://www.bancomer.com).

Investors who have access to this document should be aware that the securities, instruments or investments to which it refers may not be appropriate for them due to their specific investment goal, financial position or risk profile, for these have not been taken into account in the preparation of this report. Therefore, investors should make their own investment decisions considering the said circumstances and obtaining such specialized advice as may be necessary. Investors should note that the past performance of securities or instruments or the historical results of investments do not guarantee future performance. The market prices of securities or instruments or the results of investments could fluctuate against the interests of investors. Investors should be aware that they could even face a loss of their investment.



The contents of this document are based upon information available to the public that has been obtained from sources considered to be reliable. However, such information has not been independently verified by BBVA Bancomer, and therefore no warranty, either express or implicit, is given regarding its accuracy, integrity or correctness. BBVA Bancomer, accepts no liability of any type for any direct or indirect losses arising from the use of the document or its contents.

Investors should note that the past performance of securities or instruments or the historical results of investments do not guarantee future performance. The market prices of securities or instruments or the results of investments could fluctuate against the interests of investors. Investors should be aware that they could even face a loss of their investment.

Transactions in futures, options or high-yield securities can involve high risk and are not appropriate for every investor. Indeed, in the case of some investments, the potential losses may exceed the amount of the initial investment; in such circumstance, investors may be required to pay more money to support those losses. Thus, before undertaking any transaction with these instruments, investors should be aware of their characteristics, as well as the rights, liabilities and risks associated with these securities and their underlying investments. Investors should also be aware that secondary markets for the said instruments may be limited or may not exist.

BBVA Bancomer, or any of its affiliates, as well as their respective executives and employees, may have a position in any of the securities or instruments referred to, directly or indirectly, in this document, or in any other related thereto; they may trade for their own account or for third-party account in those securities, provide consulting or other services to the issuer of the aforementioned securities or instruments or to companies related thereto or to their shareholders, executives or employees, or may have interests or perform transactions in those securities or instruments or related investments before or after the publication of this report, to the extent permitted by the applicable law.

BBVA Bancomer BBVA Securities Inc., BBVA Brazil, BBVA Continental, BBVA Banco Frances, BBVA Chile or any affiliate of the BBVA Group, of its affiliates' salespeople, traders, and other professionals may provide oral or written market commentary or trading strategies to its clients that reflect opinions that are contrary to the opinions expressed herein. Furthermore, BBVA Bancomer or any of its affiliates' BBVA Securities Inc., BBVA Brazil, BBVA Continental, BBVA Banco Frances, BBVA Chile or any affiliate of the BBVA Group's proprietary trading and investment businesses may make investment decisions that are inconsistent with the recommendations expressed herein.

No part of this document may be (i) copied, photocopied or duplicated by any other form or means (ii); redistributed or forwarded; or (iii) quoted, without the prior written consent of BBVA Bancomer. No part of this report may be copied, conveyed, distributed or furnished to any person or entity in any country (or persons or entities in the same) in which its distribution is prohibited by law. Failure to comply with these restrictions may breach the laws of the relevant jurisdiction.

This document is provided in the United Kingdom solely to those persons to whom it may be addressed according to the Financial Services and Markets Act 2000 (Financial Promotion) Order 2001 and it is not to be directly or indirectly delivered to or distributed among any other type of persons or entities. In particular, this document is only aimed at and can be delivered to the following persons or entities (i) those outside the United Kingdom (ii) those with expertise regarding investments as mentioned under Section 19(5) of Order 2001, (iii) high net-worth entities; and (iv) any other person or entity under Section 49(1) of Order 2001 to whom the contents hereof can be legally revealed.

This document is being distributed for BBVA Bancomer in Singapore by Banco Bilbao Vizcaya Argentaria (BBVA), Singapore Branch purely as a resource and for general informational purposes only, and is intended for general circulation. Accordingly, this research document does not take into account the specific investment objectives, financial situation, or needs of any particular person and is exempted from the same by Regulation 34 of the Financial Advisers Regulations ("FAR") (as required under Section 27 of the Financial Advisers Act (Cap. 110) of Singapore ("FAA")).

Please note Banco Bilbao Vizcaya Argentaria (BBVA) is not an Authorised Deposit taking Institution within the meaning of the Banking Act 1959 nor is it regulated by the Australian Prudential Regulatory Authority (APRA).

The remuneration system concerning the analyst/s author/s of this report is based on multiple criteria, including the results obtained by BBVA Bancomer BBVA Securities Inc., BBVA Brazil, BBVA Continental, BBVA Banco Frances, BBVA Chile and by BBVA Group in the fiscal year, which, in turn, include the results generated by the investment banking business, common representation or credit related services; nevertheless, they do not receive any remuneration based on revenues from the mentioned areas or a specific transaction in investment banking, common representation or credit related services.

The information contained in this document should be taken only a general guide on matters that may be of interest. The application and impact of the laws may vary substantially depending on specific circumstances. Changes in regulations and the risks inherent in electronic communication may cause delays, omissions, or inaccuracy in the information contained in this site. Accordingly, the information contained in the site is supplied on the understanding that the authors and editors do not hereby intend to supply any form of consulting, legal, accounting or other advice. As such, it should not be considered a substitute for the direct advice provided by accounting and fiscal advisors or other competent consultants.

All images and texts are the property of BBVA Bancomer and may not be downloaded from the Internet, distributed, stored, re-used, re-transmitted, modified or used in any way, except as specified in this document, without the express written consent of BBVA Bancomer. BBVA Bancomer reserves all intellectual property rights to the fullest extent of the law. None of the information contained herein may be interpreted as a concession by implication, exclusion or any other means, of any patent or brand of BBVA Bancomer or of any third party. Nothing established herein should be interpreted as a concession of any license or right under any BBVA Bancomer copyright.

BBVA Bancomer, as well as its executives and employees have adopted the Código de Conducta de Grupo Financiero BBVA Bancomer, which is available in our internet site [www.bancomer.com](http://www.bancomer.com).

BBVA Bancomer, BBVA and the entities of the BBVA Group, including BBVA Global Markets Research, are subject to BBVA Group Policy on Conduct in the Securities Markets. In each entity where the Group Conducts Businesses in the Security Markets, the Policy is supplemented with the Internal Standards of Conduct which, among other regulations, include rules to prevent and avoid conflicts of interests with the ratings given, including information barriers. The BBVA Group Code of Conduct for Security Market Operations is available for reference at the following web site: [www.bbva.com](http://www.bbva.com) / Corporate Governance / Conduct in the Securities Markets.

BBVA Bancomer is regulated by the Comisión Nacional Bancaria y de Valores.

**“Banco Bilbao Vizcaya Argentaria S.A. (CE number AFR194) is regulated by the Hong Kong Monetary Authority and the Securities and Futures Commission in Hong Kong”**

BBVA Bancomer BBVA Brazil, BBVA Continental, BBVA Banco Frances, BBVA Chile as well as other entities in the BBVA Group that are not members of the *FINRA* (Financial Industry Regulatory Authority), are not subject to the rules of disclosure affecting such members.

This material is being distributed into the United States in reliance on an exemption from broker-dealer registration under Rule 15a-6 of the Rules under the Securities Exchange Act of 1934. Any trades in the securities discussed in this report must be effected through a U.S. registered broker/dealer as we are not authorized to accept any order to effect trades in any security discussed in this report within the U.S.