



# Daily Flash

## Asia

*Last Friday's weaker-than-expected US jobs data triggered a selloff in Asian markets today. The Korean and Chinese stock markets were among the biggest decliners, down by -2.8% and -2.7% respectively. A number of Asian stock markets are now negative for the year, including Japan, Korea, Hong Kong, Taiwan and Australia. Meanwhile, several of the region's currencies are trading at yearly lows against the dollar, reflecting heightened risk aversion - though the yen remains a notable exception, having appreciated to 78.1/USD, raising speculation about possible upcoming intervention. Investors are now looking for signs of further policy easing in support of growth, such as prospects for another rate cut in Australia at tomorrow's monetary meeting (see below).*

### China issues guidelines for further financial system reform

Over the weekend, the State Council issued lengthy guidelines on "strengthening international economic cooperation." The guidelines aim to support the opening of domestic markets to foreign investors and the liberalization of the capital account. While no timetable has been provided, such guidelines include measures to allow foreign enterprises to issue RMB bonds and equities in the domestic market. Separately, Chinese news media outlets are reporting that the authorities will expand a pilot program for bank loan securitizations, aimed at increasing bank liquidity. The pilot program was initiated in 2005 but was halted after the 2008-09 global financial crisis.

### Briefly noted:

- **South Korea's Finance Minister Bahk Jae-wan said over the weekend that various state-run funds will be utilized to help stimulate the economy;** the likely beneficiaries will be small and medium enterprises, as well technology and trade-related sectors.
- **Australia will hold its next scheduled monetary policy meeting tomorrow.** Last month the RBA cut rates by a larger-than-expected 50 bps. Given the recent weakening of the external environment and sluggish retail sales, expectations of a further rate cut tomorrow are high.

Jeffrey Cantwell  
Economist  
jeffrey.cantwell@bbva.com.hk  
+852 2582 3173

William Fitchett  
Economist  
william.fitchett@bbva.com.hk  
+852 2582 3246

With contributions from the BBVA Research Asia Team

## Calendar Indicators

<b>Australia</b>	<b>Date</b>	<b>Period</b>	<b>Prior</b>	<b>Cons.</b>	<b>Actual</b>
Current Account Balance	05-Jun	1Q	-8374M	-14650M	--
Gross Domestic Product (QoQ)	06-Jun	1Q	0.40%	0.50%	--
Gross Domestic Product (YoY)	06-Jun	1Q	2.30%	3.20%	--
Unemployment Rate	07-Jun	MAY	4.90%	5.10%	--
Trade Balance	08-Jun	APR	-1587M	-900M	--
<b>China</b>	<b>Date</b>	<b>Period</b>	<b>Prior</b>	<b>Cons.</b>	<b>Actual</b>
China HSBC Services PMI	05-Jun	MAY	54.1	--	--
Consumer Price Index (YoY)	09-Jun	MAY	3.40%	3.20%	--
Producer Price Index (YoY)	09-Jun	MAY	-0.70%	-1.20%	--
Industrial Production YTD YoY	09-Jun	MAY	11.00%	10.70%	--
Industrial Production (YoY)	09-Jun	MAY	9.30%	9.80%	--
Fixed Assets Inv Excl. Rural YTD YoY	09-Jun	MAY	20.20%	20.00%	--
Retail Sales YTD YoY	09-Jun	MAY	14.70%	14.60%	--
Retail Sales (YoY)	09-Jun	MAY	14.10%	14.20%	--
Trade Balance (USD)	10-Jun	MAY	\$18.43B	\$17.55B	--
Exports YoY%	10-Jun	MAY	4.90%	7.00%	--
Imports YoY%	10-Jun	MAY	0.30%	4.00%	--
<b>Hong Kong</b>	<b>Date</b>	<b>Period</b>	<b>Prior</b>	<b>Cons.</b>	<b>Actual</b>
Purchasing Managers Index	05-Jun	MAY	50.3	--	--
<b>India</b>	<b>Date</b>	<b>Period</b>	<b>Prior</b>	<b>Cons.</b>	<b>Actual</b>
India May Markit Services PMI	05-Jun	MAY	52.8	--	--
<b>Japan</b>	<b>Date</b>	<b>Period</b>	<b>Prior</b>	<b>Cons.</b>	<b>Actual</b>
Monetary Base (YoY)	04-Jun	MAY	-0.30%	--	2.40%
GDP Annualized	08-Jun	1Q F	4.10%	4.40%	--
Gross Domestic Product (QoQ)	08-Jun	1Q F	1.00%	1.10%	--
Trade Balance - BOP Basis	08-Jun	APR	¥4.2B	¥450.7B	--
Current Account Balance YOY%	08-Jun	APR	-8.60%	7.50%	--
<b>Malaysia</b>	<b>Date</b>	<b>Period</b>	<b>Prior</b>	<b>Cons.</b>	<b>Actual</b>
Unemployment Rate	04-Jun	1Q	3.00%	--	3.00%
Exports YoY%	06-Jun	APR	-0.10%	1.60%	--
<b>Philippines</b>	<b>Date</b>	<b>Period</b>	<b>Prior</b>	<b>Cons.</b>	<b>Actual</b>
Consumer Price Index (YoY)	05-Jun	MAY	3.00%	3.00%	--
<b>Singapore</b>	<b>Date</b>	<b>Period</b>	<b>Prior</b>	<b>Cons.</b>	<b>Actual</b>
Purchasing Managers Index	05-Jun	MAY	49.7	49.5	--
<b>South Korea</b>	<b>Date</b>	<b>Period</b>	<b>Prior</b>	<b>Cons.</b>	<b>Actual</b>
GDP (QoQ)	07-Jun	1Q F	0.90%	--	--
GDP (YoY)	07-Jun	1Q F	2.80%	--	--
<b>Taiwan</b>	<b>Date</b>	<b>Period</b>	<b>Prior</b>	<b>Cons.</b>	<b>Actual</b>
CPI YoY%	05-Jun	MAY	1.44%	1.40%	--
Total Exports (YoY)	07-Jun	MAY	-6.40%	-5.50%	--

## Indicator of the Week

### China: Industrial output for May (June 9)

Forecast: 10.5% y/y

Consensus: 9.8% y/y

Prior: 9.3% y/y

China's growth momentum moderated further in April, prompting the government to increase policy support recently. New measures have been geared towards increasing consumption and investment in infrastructure, while the central bank also decided to cut the reserve requirement ratio by 50bps on May 12th. Taking these supportive policies into account, we expect the industrial production index, a key gauge of China's growth momentum, to improve slightly in May to 10.5% in year-on-year terms, up from 9.3% in April. In addition to IP, several other important indicators will also be released next week, including inflation, retail sales, investment, and credit aggregates. Headline inflation is expected to remain low at 3.3%/y/y in May (from 3.4%/y/y in April) due to easing food and fuel prices, providing room for further policy easing in the coming months, if necessary.

## Calendar Events

### Australia - RBA Cash Target, June 5

We expect the benchmark rate to remain unchanged

**Current**

3.75%

**Consensus**

3.50%

**New**

--

### South Korea - 7-Day Repo Rate, June 8

We expect the benchmark rate to remain unchanged

**Current**

3.25%

**Consensus**

3.25%

**New**

--

## Markets Data

STOCK MARKETS	INDEX	Last price	% change over a day	% change over a week	Year to date	% change over 1 Y
	China - Shanghai Comp.	2308.6	-2.7	-2.2	5.0	-15.4
	Hong Kong - Hang Seng	18185.6	-2.0	-3.3	-1.3	-20.8
	Taiwan - Weighted	6894.7	-3.0	-3.4	-2.5	-23.8
	Japan - Nikkei 225	8295.6	-1.7	-3.5	-1.9	-12.6
	Korea - Kospi	1783.1	-2.8	-2.2	-2.3	-15.6
	India - Sensex 30	15988.4	0.1	-2.6	3.5	-13.0
	Australia - SPX/ASX 200	3985.0	-1.9	-2.0	-1.8	-13.0
	Singapore - Strait Times	2698.9	-1.7	-3.2	2.0	-14.2
	Indonesia - Jakarta Comp	3654.6	-3.8	-6.7	-4.4	-4.9
	Thailand - SET	1115.2	-2.3	-1.6	8.8	5.4
	Malaysia - KLCI	1555.2	-1.2	0.0	1.6	-0.3
	Philippines - Manila Comp.	4890.2	-3.4	-1.3	11.9	13.8

Last update: today, 17.45 Hong Kong time

FOREIGN EXCHANGE MARKETS	CURRENCY	Spot	% change over a day	% change over a week	Forward 3-month	Forward 12-month
	China (CNY/USD)	6.36	0.09	-0.29	6.38	6.43
	Hong Kong (HKD/USD)	7.76	0.00	0.03	7.76	7.75
	Taiwan (TWD/USD)	30.0	-0.39	-1.40	29.96	29.70
	Japan (JPY/USD)	78.12	-0.13	1.73	78.02	77.50
	Korea (KRW/USD)	1182	-0.36	-0.75	1187	1196
	India (INR/USD)	55.5	0.18	-0.54	56.65	58.74
	Australia (USD/AUD)	0.97	0.04	-1.49	1.04	1.06
	Singapore (SGD/USD)	1.29	0.47	-0.75	1.29	1.28
	Indonesia (IDR/USD)	9427	-0.39	-1.00	9602	10034
	Thailand (THB/USD)	31.6	0.63	0.22	31.73	32.16
	Malaysia (MYR/USD)	3.20	-0.21	-1.66	3.22	3.25
	Philippines (PHP/USD)	43.5	-0.07	0.09	43.76	44.19

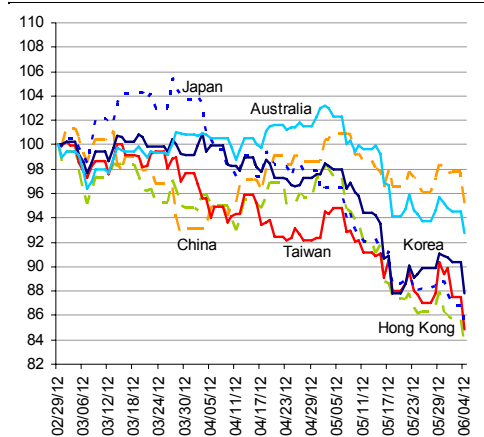
Last update: today, 17.45 Hong Kong time.

INTERBANK RATES	INDEX	Rate	net change over a day	net change over a week	net change over a month
	China (SHIBOR/7D)	2.48	0.14	0.16	-1.37
	Hong Kong (HIBOR/1W)	0.13	0.00	0.00	-0.02
	Taiwan (TAIBOR/1W)	0.67	0.00	0.00	0.00
	Japan (TIBOR/1Y)	0.76	0.00	0	0
	Korea (KORIBOR/1M)	3.36	-0.01	-0.01	-0.01
	India (MIBOR/7D)	2.91	0.06	-0.09	-1.04
	Singapore (SIBOR/1W)	0.31	0.06	0.06	0.06
	Indonesia (JIBOR/1W)	4.01	0.02	0	0
	Thailand (BIBOR/1W)	3.02	0.00	0.00	0.00
	Malaysia (KLIBOR/1W)	2.90	0.00	0.00	0.00
	Philippines (PHIBOR/1W)	3.31	0.06	0.06	0.00

Last update: today, 17.45 Hong Kong time

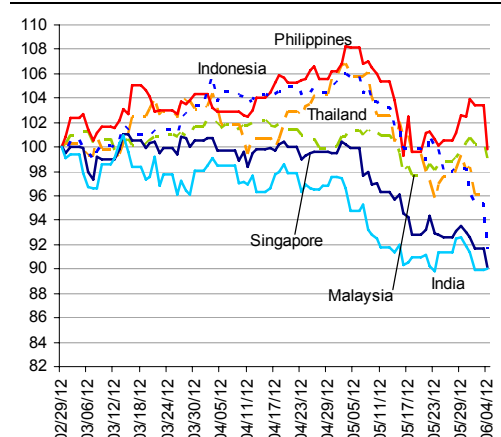
# Charts

Chart 9  
Stock Markets



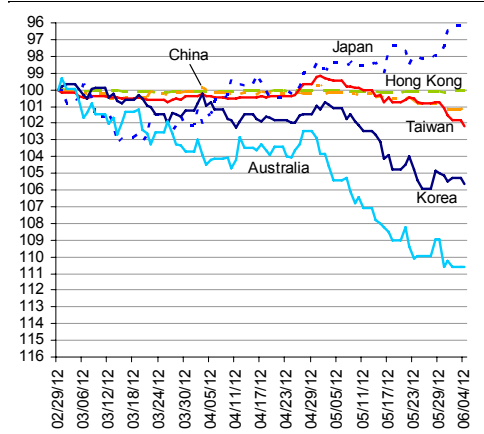
Source: BBVA Research and Bloomberg

Chart 10  
Stock Markets



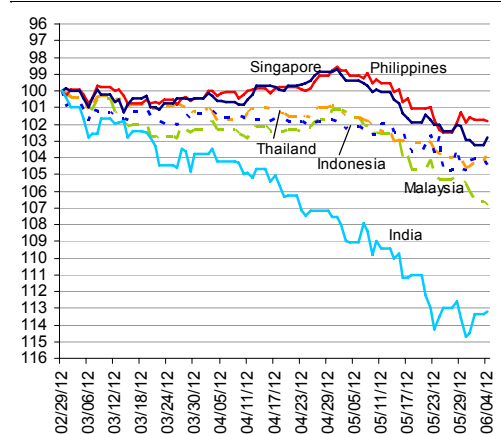
Source: BBVA Research and Bloomberg

Chart 11  
Foreign Exchange Markets



Source: BBVA Research and Bloomberg

Chart 12  
Foreign Exchange Markets



Source: BBVA Research and Bloomberg

Stephen Schwartz  
Chief Economist for Asia  
[stephen.schwartz@bbva.com.hk](mailto:stephen.schwartz@bbva.com.hk)

Fielding Chen  
Senior Economist  
[fielding.chen@bbva.com.hk](mailto:fielding.chen@bbva.com.hk)

Le Xia  
Senior Economist (China)  
[xia.le@bbva.com.hk](mailto:xia.le@bbva.com.hk)

Zhigang Li  
Senior Economist (China)  
[zhigang.li@bbva.com.hk](mailto:zhigang.li@bbva.com.hk)

Sumedh Deorukhkar  
Senior Economist (India, Mumbai)  
[sumedh.deorukhkar@grupobbva.com](mailto:sumedh.deorukhkar@grupobbva.com)

Jeffrey Cantwell  
Economist  
[jeffrey.cantwell@bbva.com.hk](mailto:jeffrey.cantwell@bbva.com.hk)

George Xu  
Economist  
[george.xu@bbva.com.hk](mailto:george.xu@bbva.com.hk)

Richard Li  
Asian FX Chief Strategist  
[richard.li@bbva.com.hk](mailto:richard.li@bbva.com.hk)

William Fitchett  
Economist  
[william.fitchett@bbva.com.hk](mailto:william.fitchett@bbva.com.hk)

**BBVA**

RESEARCH



43/F., Two IFC, 8 Finance Street, Central, Hong Kong | Tel.: +852 2582 3111 | [www.bbva.com.hk](http://www.bbva.com.hk)

Before you print this message please consider if it is really necessary.

This email and its attachments are subject to the confidentiality terms established in the corresponding regulations and are intended for the sole use of the person or persons indicated in the header. They are for internal use only and cannot be distributed, copied, conveyed or furnished to third parties without prior written consent from BBVA. If this message has been received erroneously, it is forbidden to read, use or copy any of the contents and you are asked to inform BBVA immediately by forwarding the email to the sender and eliminating it thereafter.

BBVA will continue to provide our readers up-to-date reports by emails, but you can also register directly on our website where you can find a full list of our latest reports & presentations <http://serviciodeestudios.bbva.com/KETD/ketd/ing/index.jsp>

If you wish to be excluded from this mailing list, please write to us on [research.emergingmarkets@bbva.com.hk](mailto:research.emergingmarkets@bbva.com.hk) and we shall immediately take you off the list.