

# Mexico Weekly Flash

## Next week...

- ... first clues about the possible impact of the slowdown in the US cycle on Mexico

The most recent US expectation, activity and employment indicators point to a slowdown in the second half of 2012. Expectations of US procurement managers in June, manufacturing activity in May and June non-farm payroll figures have weakened. Given the close relationship between the USA and Mexico, this suggests there will be a slowdown in our country, although this is not yet reflected in the figures. The question is therefore whether there is a delay because of a lag in the relationship between the two economies (not just slower publication of Mexican data) or whether other elements are limiting contagion: improved competitiveness offsetting the impact of slower growth in US demand and domestic support from very favorable finance conditions and increased employment. In the coming week **the May industrial production index**, particularly for manufacturing, and **automotive production figures for June** will give us some clues about the degree of contagion from the slowdown in the USA, if domestic supports continue and the external slowdown does not accelerate. We should bear in mind that, as shown in the accompanying chart, **US manufacturing is an advance indicator for Mexico**; whatever happens there today impacts here three months later.

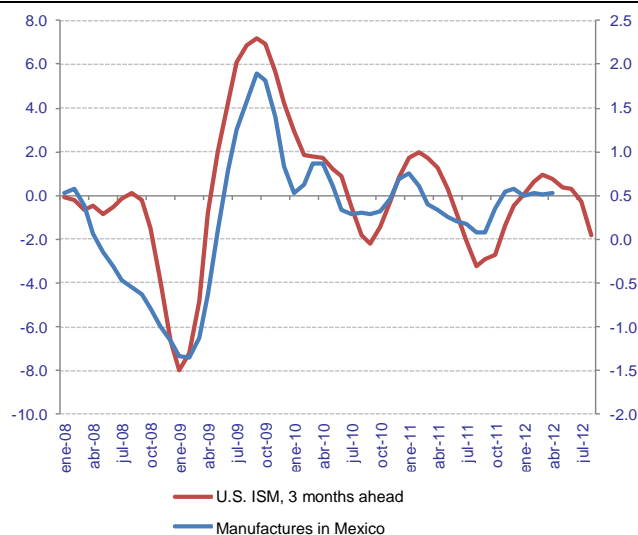
Finally, **June inflation** figures are published on Monday, July 9. We expect the increase in the first half of the month to be confirmed, with the annual rate remaining constant at 4.3%. Our forecasts suggest that this figure should be the ceiling for the year; however, we will have to watch some foodstuffs carefully, as these were affected in the first half of July by health problems restricting supply of poultry products.

- Mexico fixed income as a “safe-haven asset”, but continuing sensitivity of the MXN

Foreign flows into fixed-income instruments remained strong last week (MXN11,707 mn to 5 July) resulting in a continuance of the rally in Mexico's yield curve, with average reductions of 25 bp. This fall in domestic yields is not exclusive to our country, and is also being seen in other emerging markets. The MXN depreciated by 0.4% with June non-farm payroll figures for the USA being weaker than expected. The sensitivity of the MXN to the US cycle could be increased after the EMU meeting on Monday, July 9.

Chart 1

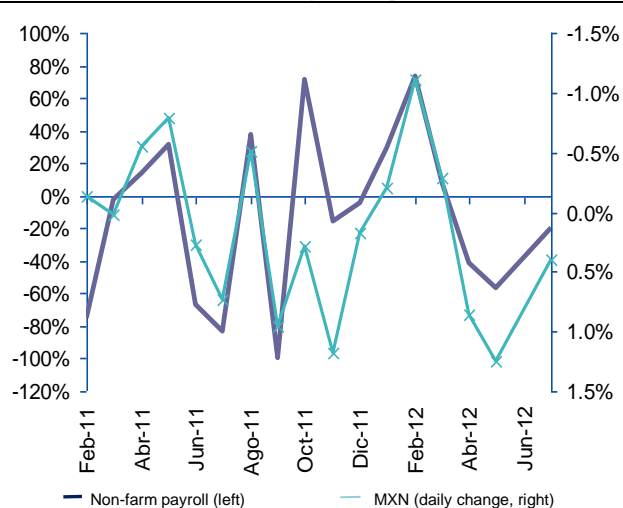
**Manufacturing activity in Mexico and Manufacturing expectations in the USA**



Source: BBVA Research and Bloomberg

Chart 2

**Surprises in US non-farm payroll figures (observed minus expected, %) and daily change in MXN (%)**



Source: BBVA Research with STPS data

# Calendar: Indicators

## Industrial output (July 12)

Forecast: -0.2% m/m, 3.1% y/y

Consensus: N.A.

Previous: 0.7% m/m, 4.2% y/y

Some important figures for the diagnosis of economic activity in the second quarter are published this week, including automotive production figures for June (reported by the AMIA, the Mexican Automotive Industry Association) and the May Industrial Output figures published by INEGI.

There were slight falls on the previous month in manufacturing output in the United States (-0.3%) and automotive production in Mexico (-1.6%). The performance of the automotive industry will be particularly relevant, as in April, despite a 7.2% monthly fall, in annual terms, output increased by 35%; this was due to a contraction of 54 thousand units in April 2011 caused by the supply chain being interrupted by Japan's March 2011 tsunami. In addition to the slight fall in US manufacturing output, the US's annual ISM indicator fell below 50 points for the first time since July 2009, indicating a contraction in manufacturing activity in the country. As an advance indicator of the trend in economic activity over coming months, this points to a slowdown in industrial activity in Mexico appearing around the third quarter of the year.

## June inflation (July 9)

Forecast: 0.43% m/m, 4.32% y/y

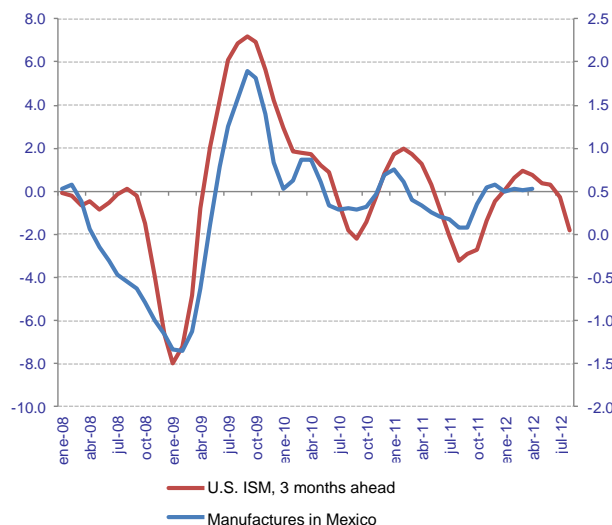
Consensus: 0.42%

Previous: -0.32% m/m, 3.86% y/y

Next Monday inflation figures for June will be published. We expect this to come in at 0.43% m/m, implying a bounce in the annual rate to 4.3% y/y from 3.9% in May. This increase in inflation is mainly due to the annual comparison effect with June 2011. Although inflation will come in above the high-end of the central bank's target range, we believe performance to date to be in line with an end-year rate of under 4% y/y. Nevertheless, we need to watch the performance of inflation carefully over the coming months, as this could accelerate significantly in July due to price increases for poultry products following the outbreak of bird flu in the state of Jalisco. Poultry products contributed to reducing inflation in the first half of June (-0.48% q/q); however, this could be diluted or even reversed in the first half of July. Inflation could be favored over coming months, if international energy resource and grain prices continue to moderate. We forecast core inflation of 0.21% m/m, putting the annual rate at around 3.5%. We expect slight price pressure on non-food goods. Despite the recent increase in inflation and expectations in excess of 4% for the coming months, we expect inflation to remain contained due to the absence of demand pressures, a very slight impact on prices of exchange rate changes, and transitory increases in the price of fruit and vegetables and, at present, eggs.

Chart 3

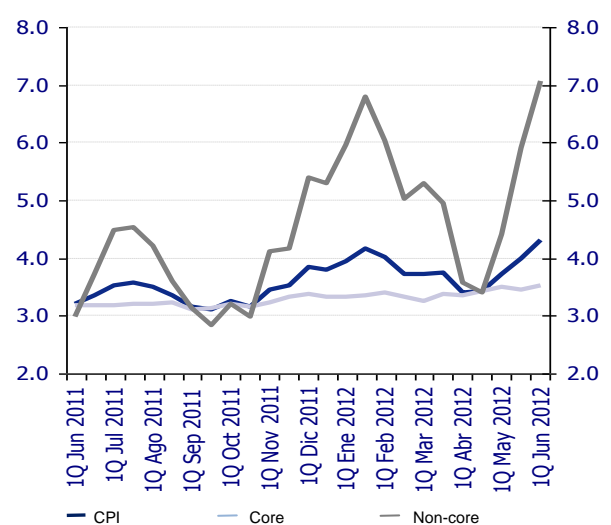
**Manufacturing activity in Mexico and Manufacturing expectations in the USA**



Source: BBVA Research with INEGI and Bloomberg data

Chart 4

**Inflation and components (y/y % change, fortnightly series)**



Source: BBVA Research with INEGI data

- **Fixed-income assets in Mexico continue acting as a "safe haven"...**

The rally in Mexico's yield curve continued during the week with the stability of the record low in US treasury bills (UST) and ongoing foreign investment inflows. Yields on the curve fell by an average of 25 bp. The biggest beneficiaries were long-term M Bonds, which fell by over 35 bp in the week (20 and 30 year). Gains were less aggressive over the mid-section of the curve, with a decrease of around 20 bp in yields.

Fixed-income assets are continuing to act as "safe havens", particularly in comparison to those of developed countries with continuing latent risks, such as the EMU countries. Foreign investment flows continue to be strong. To Thursday, July 5, net foreign inflows were a significant MXN11,707 mn. The largest flows were for maturities from 2013 to 2017, in particular 2015 (December), which accounted for 38% of total net purchases during the week.

Curve flattening strategies continue to be favored, particularly by local investors. We should note that the fall in domestic yields is not exclusive to our country, as we are also seeing vigorous performance by local currency bonds in other areas (mainly emerging markets).

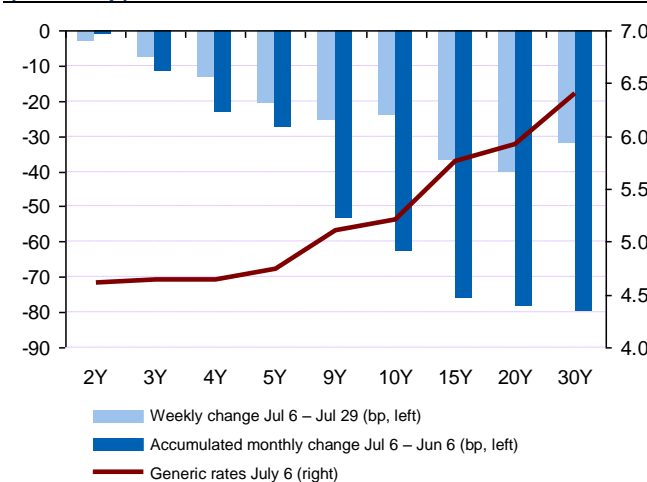
- **... however, the MXN depreciated by around 0.4% at the end of the week on the back of US data**

Non-farm payroll figures were weaker than expected, but did not raise expectations of more quantitative easing sufficiently to offset losses on risk assets globally. We should once again highlight that the sensitivity of the MXN to the US cycle could increase at the end of the EMU meeting, if there is progress on measures for the region. Although relatively favorable events have occurred in Europe, overall the US indicators published in the week poured a bucket of cold water on market euphoria, leading the MXN to lose some of the ground gained over the last week.

This lower optimism did not impact on local fixed-income assets, and this could boost the MXN, if inflows remain as strong as they have been over recent months. Given that there is still a disparity in key factors, we consider that the currency will consolidate at current levels (13.3-13.5) in the run up to Ecofin.

Chart 5

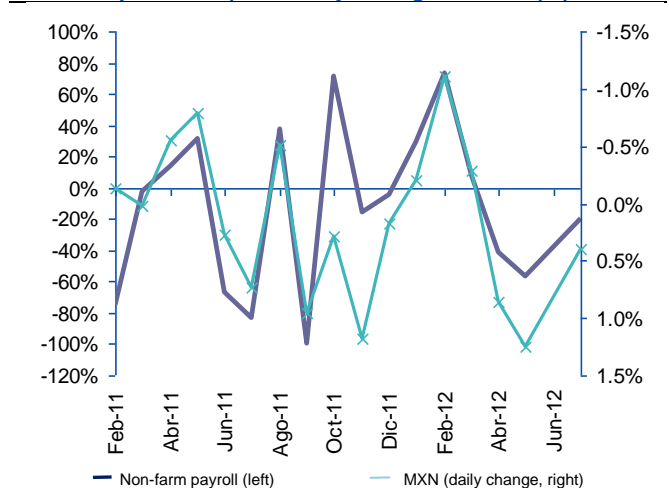
**Mexico: M Bond yield curve (% and bp)**



Source: Bloomberg and BBVA Research

Chart 6

**Surprises in US non-farm payroll figures (observed minus expected, %) and daily change in MXN (%)**



Source: Bloomberg and BBVA Research

# Technical Analysis

## IPC



Source: BBVA, Bancomer, Bloomberg

The return to 40,000pts can be read in two ways. A pull-back after testing the recent breakthrough of the support level or the start of profit taking. We have been highlighting the over-purchasing of the IPC and various issuers. This, together with the widening between 10 and 30 day rolling averages of almost 1,500 pts, inclines us to consider this to be profit taking. The change to IPC could find a first support in the 10-day rolling average at 39,800 pts. However, a fall to this level would not be sufficient to take the oscillating indicators to levels closer to the over-selling. Therefore, we consider that it should return to a second floor at 38,500 pts, the 30-day rolling average. A fall to this level would involved an adjustment of around -3.5%.

Previous Rec. (2/7/12). We continue to consider 40,000 pts to be a significant resistance point for short-term movement. Therefore, we have been reducing our short-term position in the expectation of a possible adjustment to the IPC.

## MXN



Source: BBVA, Bancomer, Bloomberg

The currency moved laterally at the start of the week, picking up during the last two sessions to finish once again above the 200-day rolling average. The oscillating indicators suggest that this bounce could continue towards the next targets at MXN13.50 and MXN13.80.

Previous Rec. (2/7/12). We believe that it could at the most hit MXN13.25 before a bounce due to over-selling in the oscillating indicators.

## 3Y M BOND



Source: BBVA, Bancomer, Bloomberg

3-YEAR M BOND: (yield): Hitting resistance at 4.75% and starting a new downward adjustment. Although it is close to very advance levels of over-selling, we do not see a strong support until 4.55%.

Previous Rec. (2/7/12). This may continue, initially, toward MXN4.75% and, if the 30-day rolling average is breached, we could see a return to 4.9%.

## 10Y M BOND



Source: BBVA, Bancomer, Bloomberg

10-YEAR M BOND (yield): Extreme over-selling reading, as the bond is in the 2nd standard deviation of the 60 week regression. This could give technical rebounds to 5.4% and subsequently 5.6%.

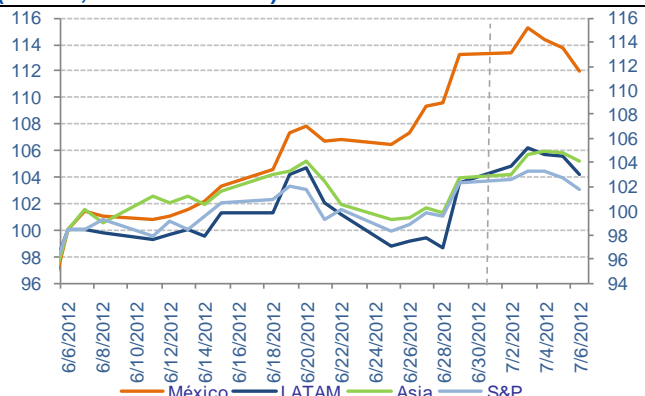
Previous Rec. (2/7/12). The opening of short-term rolling averages suggests a return to 5.8%.

# Markets

- Weaker than expected US job creation data influenced the fall in stock markets and depreciation of the currency during the week. This followed the expansionary actions of monetary authorities in Europe, the UK and China not managing to boost confidence in the markets.

Chart 7

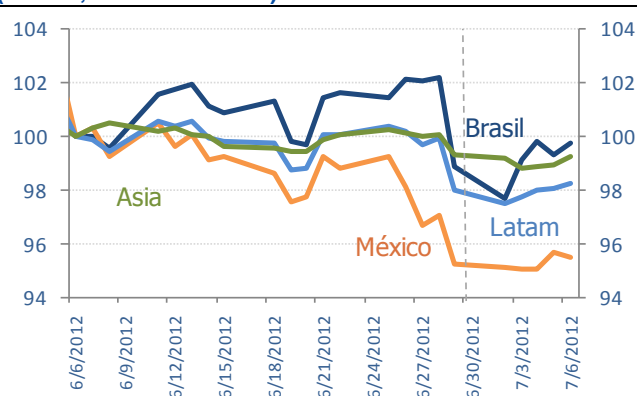
**Stock Markets: MSCI Indices**  
(June 6, 2012 index=100)



Source: Bloomberg & BBVA Research

Chart 8

**Foreign exchange: dollar exchange rates**  
(June 6, 2012 index=100)

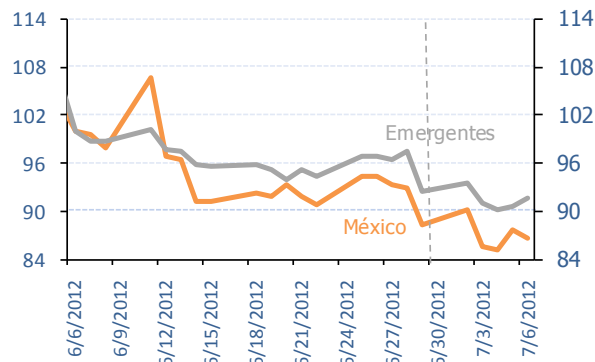


Source: Bloomberg and BBVA Research. Note: LATAM includes Argentina, Brazil, Chile, Colombia and Peru. Asia includes the Philippines, South Korea, Taiwan, Singapore, Indonesia and Thailand. Non-weighted averages

- Increase in risk aversion at the end of the week after US employment figures increased concerns about the fragility of the recovery in the face of risk events in Europe.

Chart 9

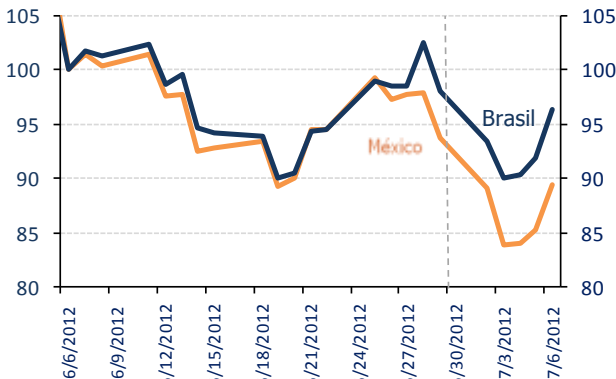
**Risk: EMBI+ (June 6, 2012 index=100)**



Source: Bloomberg & BBVA Research

Chart 10

**Risk: 5-year CDS (June 6, 2012 index=100)**

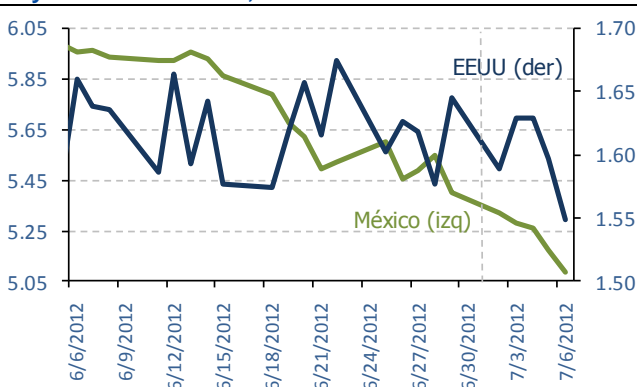


Source: Bloomberg & BBVA Research

- Fall in US rates at the end of the week. Rates in Mexico continue falling, influenced by the performance of Treasury bonds and foreign investment inflows.

Chart 11

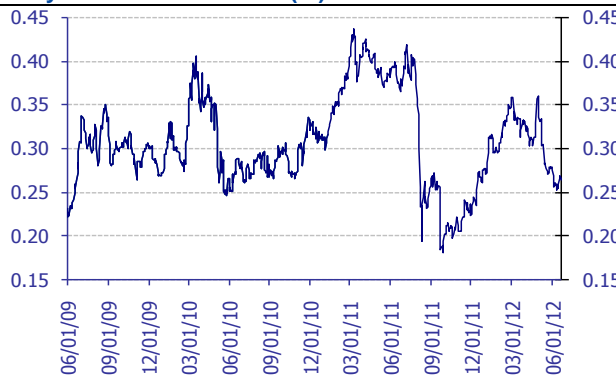
**10-year interest rates\*, last month**



Source: Bloomberg & BBVA Research

Chart 12

**Carry-trade Mexico index (%)**



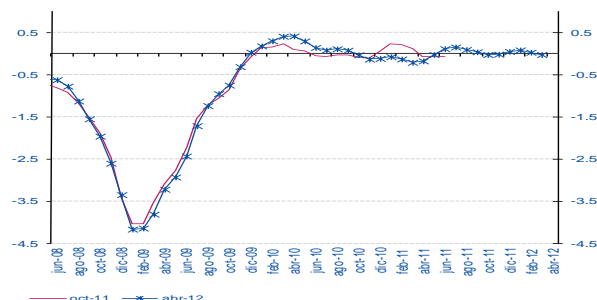
Source: BBVA Research with data from Bloomberg

# Activity, inflation, monetary conditions

- Output holds positive performance, situation indicators point to 2Q12 with quarterly rates around 0.7%.

Chart 13

## BBVA Research Synthetic Activity Indicator for the Mexican economy

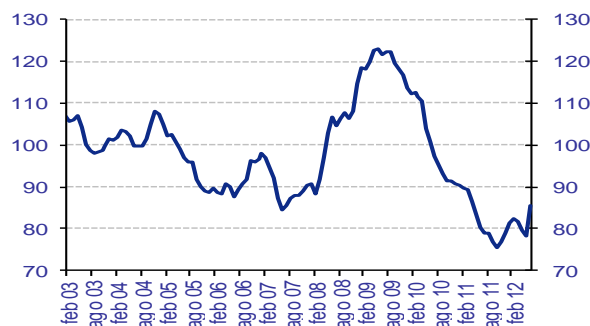


Source: BBVA Research with data from INEGI, AMIA and BEA  
Weighted sum of 21 different indicators of activity, expenditure and expectation, based on trend series.

- Inflation ceases downward surprises while output moved up.

Chart 15

## Inflation Surprise Index (July 2002=100)

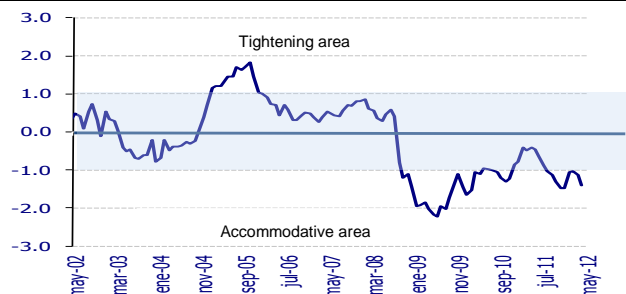


Source: BBVA Research with data from Banxico from the monthly surveys on the expectations of economic specialists in the private sector.

- Monetary Conditions ease due to exchange rate depreciation in May and June

Chart 17

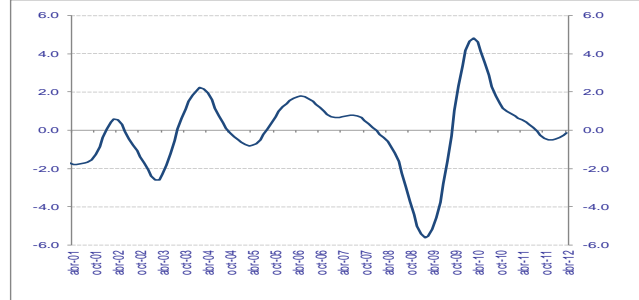
## Monetary Conditions Index



Source: BBVA Research

Chart 14

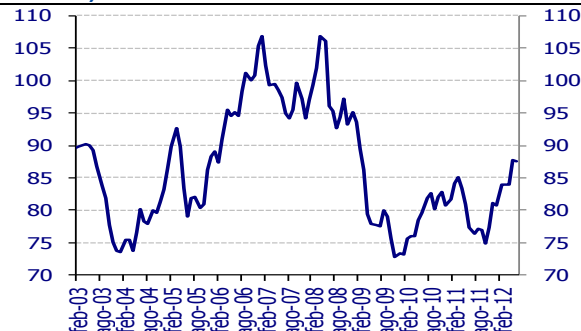
## Advance Indicator of Activity, trend (% change y/y)



Source: INEGI

Chart 16

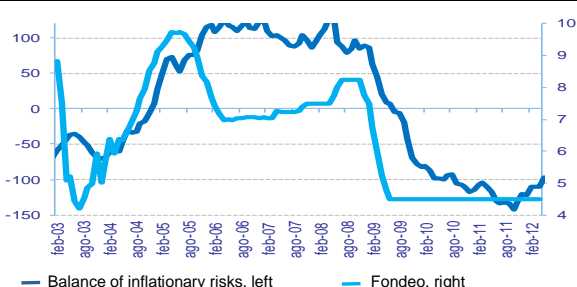
## Activity Surprise Index (2002=100)



Source: BBVA Research with data from Bloomberg. Difference between recorded data and the Bloomberg consensus for seven activity variables in Mexico. Standardized index. Rises (falls): positive (negative) surprises.

Chart 18

## Balance of Inflationary Risks\* and Lending Rate (standardized and %; monthly averages)



Source: BBVA Research. \* Standardized and weighted index (of inflation and economic growth) based on economic indicators of economic activity and inflation. A rise in the index points to a greater weight of inflationary risks over growth risks and thus a greater possibility of monetary restriction



Claudia Ceja  
claudia.ceja@bbva.bancomer.com  
+5255 5621 9715  
Octavio Gutiérrez Engelmán  
o.gutierrez3@bbva.bancomer.com  
+5255 5621 9245  
Iván Martínez  
ivan.martinez.2@bbva.com

Pedro Uriz  
pedro.uriz2@bbva.com

Julian Cubero  
juan.cubero@bbva.com

Ociel Hernández  
o.hernandez@bbva.bancomer.com  
+5255 5621 9616  
Rodrigo Ortega  
r.ortega@bbva.bancomer.com  
+52 55 5621 9701

Alejandro Fuentes Pérez  
a.fuentes@bbva.bancomer.com  
+52 55 5621 9705  
Arnoldo López  
arnoldo.lopez@bbva.com

Cecilia Posadas  
c.posadas@bbva.com



| Av. Universidad 1200, Col. Xoco, Mexico 03339 D.F. | [researchmexico@bbva.bancomer.com](mailto:researchmexico@bbva.bancomer.com) | [www.bbva.com/research](http://www.bbva.com/research)

## **IMPORTANT DISCLOSURES**

The BBVA Group companies identified by the research analysts' names included on page 7 of this report have participated in or contributed to its preparation, including the information, opinions, estimates, forecasts and recommendations therein.

**For recipients in the European Union**, this document is distributed by Banco Bilbao Vizcaya Argentaria, S.A. (hereinafter called "BBVA"). BBVA is a bank supervised by the Bank of Spain and by Spain's Stock Exchange Commission (CNMV), registered with the Bank of Spain with number 0182.

**For recipients in Mexico**, this document is distributed by BBVA Bancomer, S.A. Institución de Banca Múltiple, Grupo Financiero BBVA Bancomer (hereinafter called "BBVA Bancomer"). BBVA Bancomer is a bank supervised by the Comisión Nacional Bancaria y de Valores de México.

**For recipients in USA**, this document is being distributed by BBVA Securities Inc. (hereinafter called "BBVA Securities"), a subsidiary of Banco Bilbao Vizcaya Argentaria, S.A. ("BBVA") registered with and supervised by the U.S. Securities and Exchange Commission and a member of the Financial Industry Regulatory Authority ("FINRA") and the Securities Investor Protection Corporation. U.S. persons wishing to execute any transactions should do so only by contacting a representative of BBVA Securities in the U.S. Unless local regulations provide otherwise, non-U.S. persons should contact and execute transactions through a BBVA branch or affiliate in their home jurisdiction.

BBVA and BBVA Group companies or affiliates (art. 42 of the Royal Decree of 22 August 1885 Code of Commerce), are subject to the BBVA Group Policy on Conduct for Security Market Operations which establishes common standards for activity in these entities' markets, but also specifically for analysis and analysts. This BBVA policy is available for reference at the following web site: [www.bbva.com](http://www.bbva.com).

Analysts residing outside the U.S. who have contributed to this report are not registered with or qualified as research analysts by FINRA or the New York Stock Exchange and may not be considered "associated persons" of BBVA Securities (as such term is construed by the rules of FINRA). As such, they are not subject to NASD Rule 2711 restrictions on communications with subject companies, public appearances and trading of securities held in research analysts' accounts.

**BBVA is subject to a Code of Conduct for Security Market Operations, which details the standards of the above-mentioned overall policy for the EU. Among other regulations, it includes rules to prevent and avoid conflicts of interests with the ratings given, including information barriers. This Code of Conduct for Security Market Operations is available for reference at the following web site: [www.bbva.com](http://www.bbva.com) / Corporate Governance.**

**BBVA Bancomer is subject to a Code of Conduct and to Internal Standards of Conduct for Security Market Operations, which details the standards of the above-mentioned overall policy for Mexico. Among other regulations, it includes rules to prevent and avoid conflicts of interests with the ratings given, including information barriers. These Code and the Internal Standards is available for reference at the following web site: [www.bancomer.com/GrupoBBVABancomer/Conócenos](http://www.bancomer.com/GrupoBBVABancomer/Conócenos).**

**BBVA Securities is subject to a Capital Markets Code of Conduct, which details the standards of the above-mentioned overall policy for USA. Among other regulations, it includes rules to prevent and avoid conflicts of interests with the ratings given, including information barriers.**

---

## **EXCLUSIVELY FOR RECIPIENTS RESIDENT IN MEXICO**

In the past twelve months, BBVA Bancomer has granted banking credits to the following companies covered in this report: **ALFA, AXTEL, CONSTRUCCION Y SERVICIOS INTEGRALES SIGMA, CORPORACION GEO, DAIMLER MEXICO, FACILEASING, GENOMMA LAB INTERNACIONAL, GRUPO CARSO, GRUPO CASA SABA, GRUPO CEMENTOS DE CHIHUAHUA, GRUPO COMERCIAL CHEDRAUI, GRUPO PALACIO DE HIERRO, IMPULSORA DEL DESARROLLO Y EL EMPLEO EN AMERICA LATINA, INDUSTRIAS BACHOCO, INMOBILIARIA RUBA, PEMEX CORPORATIVO, TIENDAS CHEDRAUI, URBÍ DESARROLLOS URBANOS, VOLKSWAGEN LEASING.**

In the past twelve months, BBVA Bancomer has granted *Representación Común* services to the following companies covered in this report: **N/A**

**BBVA or one or more of its affiliates makes a market/provides liquidity in the securities of the following companies covered in this report:** MexDer Contrato de Futuros (Dólar de Estados Unidos de América (DEUA), TIIE de 28 días (TE28), Swap de TIIE, CETES de 91 días (CE91)), Bonos M, Bonos M3, Bonos M10, Índice de Precios y Cotizaciones de la BMV (IPC), Contrato de Opciones (IPC, Acciones América Móvil, Cemex, CPO, Femsa UBD, Gcarso A1, Telmex L), Udibonos.

As far as it is known, a Director, Executive Manager or Manager reporting directly to the BBVA Bancomer General Manager has the same position in the following companies that may be covered in this report: Alfa, Alsea, America Movil, Asur, CMR, Coca-Cola Femsa, Consorcio Hogar, Dine, El Puerto de Liverpool, Fomento Economico Mexicano, Gruma, Grupo Aeroportuario del Pacífico, Grupo Aeroportuario del Sureste, Grupo Bimbo, Grupo Carso, Grupo Financiero Inbursa, Grupo Kuo, Grupo Modelo, Grupo Posadas, Grupo Televisa, Industrias Peñoles, Invev Controladora, México, Grupo Aeroportuario del Centro Norte, Sanborns Hermanos, Sears Roebuck de México, Telecom, Telefonos de México, Tenaris, Urbí Desarrollos Urbanos, Vitro.

BBVA Bancomer, and, as applicable, its affiliates within BBVA Bancomer Financial Group, may hold from time to time investments in the securities or derivatives financial instruments with underlying securities covered in this report, which represents 10% or more of its securities or investment portfolio, or 10% or more of the issue or underlying of the securities covered.

## DISCLAIMER

This document and the information, opinions, estimates, forecasts and recommendations expressed herein have been prepared to provide BBVA Group's customers with general information and are current as of the date hereof and subject to changes without prior notice. Neither BBVA nor any of its affiliates is responsible for giving notice of such changes or for updating the contents hereof.

This document and its contents do not constitute an offer, invitation or solicitation to purchase or subscribe to any securities or other instruments, to undertake or divest investments, or to participate in any trading strategy. Neither shall this document nor its contents form the basis of any contract, commitment or decision of any kind.

**Investors who have access to this document should be aware that the securities, instruments or investments to which it refers may not be appropriate for them due to their specific investment goals, financial positions or risk profiles, as these have not been taken into account to prepare this report.** Therefore, investors should make their own investment decisions considering the said circumstances and obtaining such specialized advice as may be necessary. Other than the disclosures relating to BBVA Group, the contents of this document are based upon information available to the public that has been obtained from sources considered to be reliable. However, such information has not been independently verified by BBVA or any of its affiliates and therefore no warranty, either express or implicit, is given regarding its accuracy, integrity or correctness. To the extent permitted by law, **BBVA and its affiliates accept no liability of any type for any direct or indirect losses or damages arising from the use of this document or its contents. Investors should note that the past performance of securities or instruments or the historical results of investments do not guarantee future performance.**

**The market prices of securities or instruments or the results of investments could fluctuate against the interests of investors. Investors should be aware that they could even face a loss of their investment. Transactions in futures, derivatives, options on securities or high-yield securities can involve high risks and are not appropriate for every investor. Indeed, in the case of some investments, the potential losses may exceed the amount of initial investment and, in such circumstances; investors may be required to pay more money to support those losses. Thus, before undertaking any transaction with these instruments, investors should be aware of their operation, as well as the rights, liabilities and risks implied by the same and the underlying securities. Investors should also be aware that secondary markets for the said instruments may not exist.**

BBVA or any of its affiliates' salespeople, traders, and other professionals may provide oral or written market commentary or trading strategies to its clients that reflect opinions that are contrary to the opinions expressed herein. Furthermore, BBVA or any of its affiliates' proprietary trading and investing businesses may make investment decisions that are inconsistent with the recommendations expressed herein. No part of this document may be (i) copied, photocopied or duplicated by any other form or means (ii) redistributed or (iii) quoted, without the prior written consent of BBVA. No part of this report may be copied, conveyed, distributed or furnished to any person or entity in any country (or persons or entities in the same) in which its distribution is prohibited by law. More specifically, this document is in no way intended for, or to be distributed or used by an entity or person resident or located in a jurisdiction in which the said distribution, publication, use of or access to the document contravenes the law which requires BBVA or any of its affiliates to obtain a licence or be registered. Failure to comply with these restrictions may breach the laws of the relevant jurisdiction.

The remuneration system concerning the analysts responsible for the preparation of this report is based on multiple criteria, including the revenues obtained by BBVA and, indirectly, the results of BBVA Group in the fiscal year, which, in turn, include the results generated by the investment banking business; nevertheless, they do not receive any remuneration based on revenues from any specific transaction in investment banking.

In the United Kingdom, this document is directed only at persons who (i) have professional experience in matters relating to investments falling within article 19(5) of the financial services and markets act 2000 (financial promotion) order 2005 (as amended, the "financial promotion order"), (ii) are persons falling within article 49(2) (a) to (d) ("high net worth companies, unincorporated associations, etc.") of the financial promotion order, or (iii) are persons to whom an invitation or inducement to engage in investment activity (within the meaning of section 21 of the financial services and markets act 2000) may otherwise lawfully be communicated (all such persons together being referred to as "relevant persons"). This document is directed only at relevant persons and must not be acted on or relied on by persons who are not relevant persons. Any investment or investment activity to which this document relates is available only to relevant persons and will be engaged in only with relevant persons.

BBVA Hong Kong Branch (CE number AFR194) is regulated by the Hong Kong Monetary Authority and the Securities and Futures Commission of Hong Kong.

This document is distributed in Singapore by the BBVA's office in this country for general information purposes and it is generally accessible. In this respect, this document does not take into account the specific investment goals, the financial situation or the need of any particular person and it is exempted from Regulation 34 of the Financial Advisors Regulation ("FAR") (as required in Section 27 of the Financial Advisors Act (Chapter 110) of Singapore ("FAA"))

BBVA, BBVA Bancomer or BBVA Securities are not authorised deposit institutions in accordance with the definition of the Banking Act 1959 nor are they regulated by the Australian Prudential Regulatory Authority (APRA)

---

## GENERAL DISCLAIMER FOR THE EVENT THAT THE READERS HAVE ACCESSED TO THE REPORT THROUGH THE INTERNET

### Internet Access

In the event that this document has been accessed via the internet or via any other electronic means which allows its contents to be viewed, the following information should be read carefully:

The information contained in this document should be taken only as a general guide on matters that may be of interest. The application and impact of the laws may vary substantially depending on specific circumstances. BBVA does not warrant that this report and/or its contents published on the Internet are appropriate for use in all geographic areas, or that the financial instruments, securities, products or services that can be referenced on it are available or appropriate for sale or use in all jurisdictions or to all investors or counterparties. Recipients of this report acceding to it through the Internet are acceding on their own initiative and are responsible for compliance with local regulations applicable to them.

Changes in regulations and the risks inherent in electronic communications may cause delays, omissions, or inaccuracy in the information contained in this site. Accordingly, the information contained in the site is supplied on the understanding that the authors and editors do not hereby intend to supply any form of consulting, legal, accounting or other advice.

All images and texts are the property of BBVA and may not be downloaded from the Internet, copied, distributed, stored, re-used, re-transmitted, modified or used in any way, except as specified in this document, without the express written consent of BBVA. BBVA reserves all intellectual property rights to the fullest extent of the law.