

Real Estate Flash Mexico

Mexico

Construction picks up pace and drives employment

- Construction expands in the first 5 months of the year alongside workforce
- Construction output expands less than the economy
- We maintain advanced forecasts with lower increases

Construction output in May expanded 4.5% in annual terms and fell 0.7% m/m

In the first 5 months of the year, industrial construction output expanded at rates above 4%. Over this period, construction averaged a 4.9% y/y growth rate with May seeing the lowest rate for the period. There was a 0.7% decline month on month with regard to April in the seasonally adjusted series. All three components of construction expanded at similar rates. Building saw an annual rate of 4.1%, while civil works came in at 4.9% and specialized works increased by 5% y/y in May.

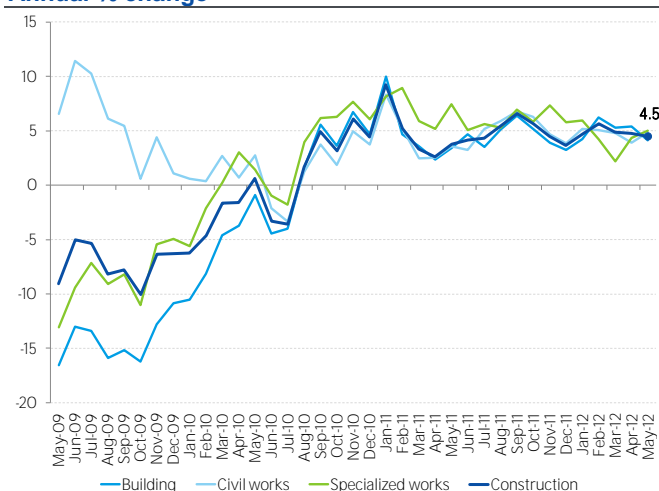
For the second time in the year, construction expanded at a rate lower than the economy

Contrasted with the IGAE, construction performance measured through industrial output came in slightly below the domestic economy. In April, the IGAE saw annual growth of 5.3% in the seasonally adjusted series while construction was up 4.6% in the same terms. Even when in two of the four quarters construction expanded less than the domestic economy, the difference was under one percentage point.

Construction will continue to expand

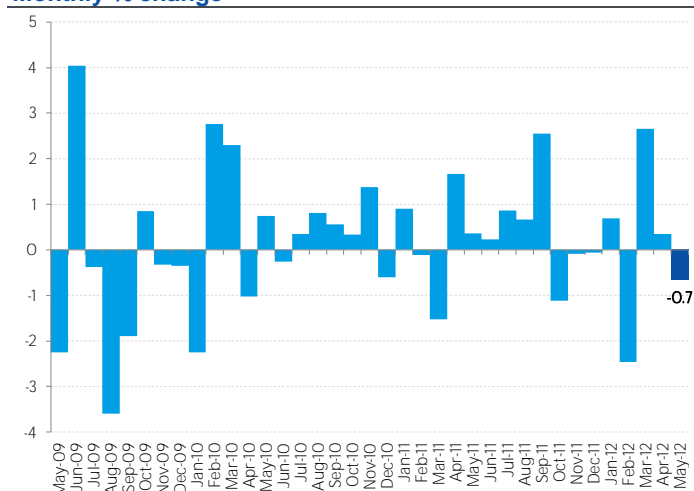
Relevant indicators also continue to move up. Construction employment recorded at the IMSS expanded 6.5% in April at an annual rate, two points above total employment. Cement sales volume slowed and concrete continues in negative terrain. With the trend seen in industrial output and relevant indicator performance, we see construction continuing to expand over the rest of the year, albeit at lower rates.

Chart 1
Industrial Activity: Construction and its components
Annual % change



Source: BBVA Research with INEGI Industrial Activity data (original series)

Chart 2
Industrial Activity: Construction
Monthly % change



Source: BBVA Research with INEGI Industrial Activity data (seasonally-adjusted series)

Chart 3
Construction and the IGAE index
Index

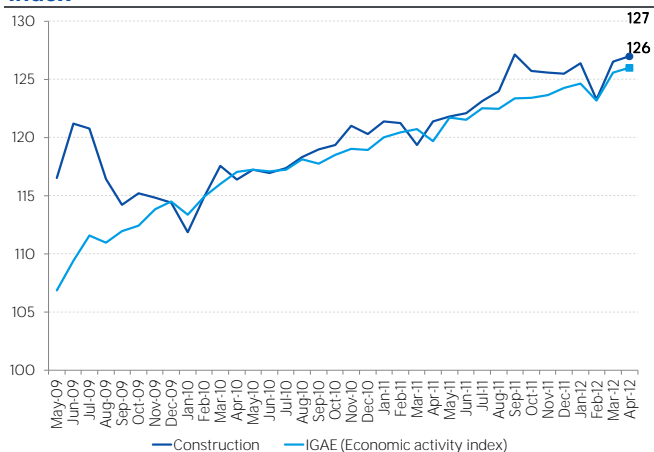


Chart 4
Construction and the IGAE index
Annual % change in the index

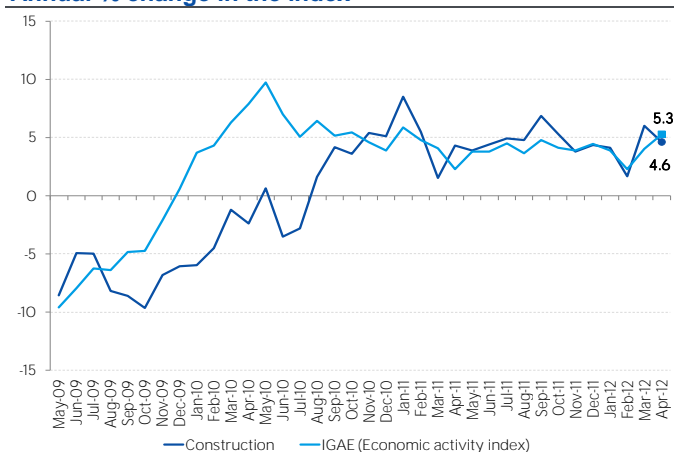


Chart 5
Timely construction indicators
Millions of tons and workers

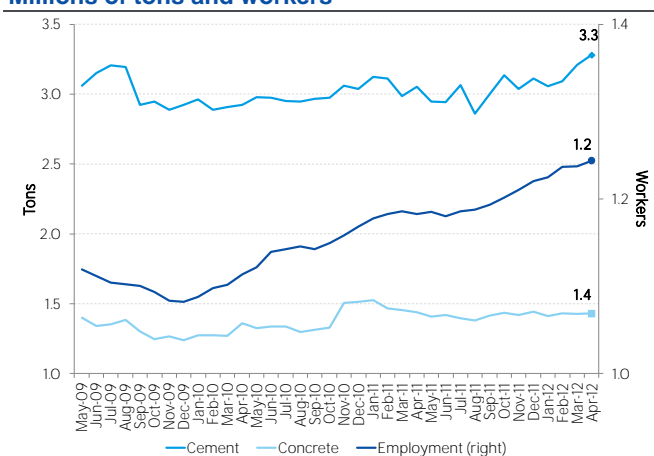
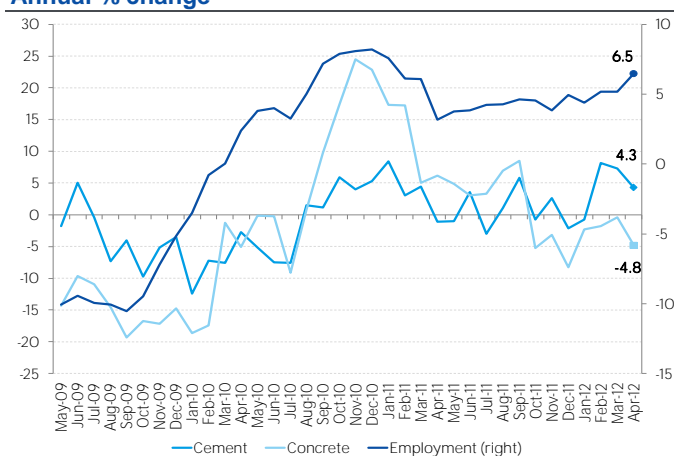


Chart 6
Timely construction indicators
Annual % change



Source: BBVA Research with IMSS and INEGI data (seasonally adjusted series)

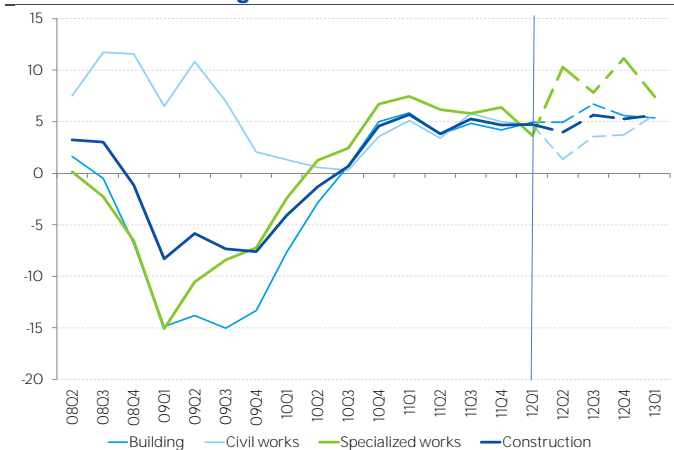
Source: BBVA Research with IMSS and INEGI data (original series)

Table 1
Industrial Activity: Construction and its components
Annual % change

| Period | Construction | Building | Civil works | Specialized works |
|--------|--------------|----------|-------------|-------------------|
| 2010 | 0.0 | -1.2 | 1.4 | 2.0 |
| 2011 | 4.9 | 4.7 | 4.8 | 6.5 |
| 11Q1 | 5.9 | 6.1 | 5.3 | 7.7 |
| 11Q2 | 3.5 | 3.5 | 3.1 | 5.9 |
| 11Q3 | 5.4 | 5.0 | 5.9 | 6.0 |
| 11Q4 | 4.6 | 4.1 | 4.9 | 6.3 |
| 12Q1 | 5.1 | 5.2 | 5.0 | 4.1 |

Note: Consider an update of the above figures from INEGI.

Chart 7
GDP forecasts: Construction and its components
Real annual % change



Source: BBVA Research with INEGI Industrial Activity data (original series)

Source: BBVA Research with INEGI GDP data (seasonally-adjusted series)

Samuel Vázquez
samuel.vazquez@bbva.com

Av. Universidad 1200, Col. Xoco, Mexico 03339 D.F. | researchmexico@bbva.bancomer.com | www.bbva.com | Follow us on Twitter

Before printing this message, please ensure that it is necessary to do so.

This communication and its appendices are subject to confidentiality under the terms established in applicable regulations, and are intended solely for the recipient referred to in the header. These are intended for exclusive internal use and their disclosure, copy, transfer, delivery, issue, or referral to third parties outside of the BBVA Group is forbidden without the sender's prior written consent. If you have received this message in error, you should be aware that reading, using or copying it is forbidden and you are requested to immediately notify us of this fact by replying to the sender's e-mail address and then deleting it.