

# Daily Flash

## Asia

*A weak flash PMI outturn in China today (see below) added to concerns about slowing growth momentum. Equity markets nevertheless were up (Hang Seng: +1.1%; Nikkei: 0.5%), on expectations that the continuing stream of weak activity data in China will lead to further policy easing. Currencies in the region were also boosted after the release of the Fed's minutes yesterday, as markets see an increased likelihood of QE this year – the yen appreciated against the dollar by almost 1.0% immediately following the release (which occurred after market hours in Asia), while today, the Malaysian ringgit advanced by 0.8% to 3.096/USD.*

### Weak flash PMI in China shows that growth momentum is not yet rising

The Markit flash PMI manufacturing outturn for August showed a decline to 47.8%, the lowest since November 2011. The moderation was broad-based, with weakness in both the new orders and exports sub-components. We await the release of August official PMI on September 1<sup>st</sup>, which should provide a broader reading of output trends (the Markit PMI tends to focus more on smaller, export-oriented firms). We expect further policy easing in the months ahead, including stepped up infrastructure spending and further cuts in the RRR and interest rates.

### Singapore inflation falls, raising the odds of policy easing

Singapore's inflation in July (4.0% y/y, consensus: 4.5%) moved sharply lower on decreasing transportation costs after reaching 5.3% y/y in June. Close attention will now be paid to upcoming high frequency outturns, which will help shape expectations on possible monetary easing at the Monetary Authority of Singapore's semi-annual policy meeting in October. We project inflation to decline gradually throughout the rest of the year, which, given stagnating growth momentum (2Q GDP growth was -0.7% q/q), would provide room for the MAS to slow currency appreciation in the face of weak global conditions (the SGD is currently 1.24/USD, and has risen by 4.0% against the USD this year, making it the best performing regional currency).

### Taiwan posts better-than-expected IP outturn

In a rare positive output reading against external headwinds, Taiwan's July industrial production came out better than expected at -0.02% y/y (consensus: -1.9% y/y), from -2.4% in June, mainly driven by improved performance in the manufacturing sector. Looking ahead, challenges facing Taiwan's economic outlook remain, and the latest China flash PMI outturn suggests that external headwinds will likely continue for Taiwan's export sector. In the immediate future, a strong typhoon bearing down on the island in the coming days may disrupt activity further.

Jeffrey Cantwell  
Economist  
jeffrey.cantwell@bbva.com.hk  
+852 2582 3173

William Fitchett  
Economist  
william.fitchett@bbva.com.hk  
+852 2582 3246

With contributions from the BBVA Research Asia Team

## Calendar Indicators

<b>China</b>	<b>Date</b>	<b>Period</b>	<b>Prior</b>	<b>Cons.</b>	<b>Actual</b>
HSBC Flash Manufacturing PMI	23-Aug	Aug	49.3	--	47.8
<b>Hong Kong</b>	<b>Date</b>	<b>Period</b>	<b>Prior</b>	<b>Cons.</b>	<b>Actual</b>
CPI - Composite Index (YoY)	21-Aug	Jul	3.70%	3.40%	1.60%
<b>India</b>	<b>Date</b>	<b>Period</b>	<b>Prior</b>	<b>Cons.</b>	<b>Actual</b>
CPI (YoY)	21-Aug	Jul	10.02%	--	9.86%
<b>Japan</b>	<b>Date</b>	<b>Period</b>	<b>Prior</b>	<b>Cons.</b>	<b>Actual</b>
All Industry Activity Index (MoM)	21-Aug	Jun	-0.30%	0.20%	0.20%
Merchnds Trade Balance Total	22-Aug	Jul	¥61.7B	¥270.0B	¥517.4B
Merchnds Trade Exports YoY	22-Aug	Jul	-2.3	-2.9	-8.1
Merchnds Trade Imports YoY	22-Aug	Jul	-2.2	3	2.1
<b>Philippines</b>	<b>Date</b>	<b>Period</b>	<b>Prior</b>	<b>Cons.</b>	<b>Actual</b>
Balance of Payments	22-Aug	Jul	\$14M	--	\$3182M
<b>Singapore</b>	<b>Date</b>	<b>Period</b>	<b>Prior</b>	<b>Cons.</b>	<b>Actual</b>
CPI (MOM) - NSA	23-Aug	Jul	0.00%	0.60%	0.20%
CPI (YoY)	23-Aug	Jul	5.30%	4.50%	4.00%
Industrial Production MoM SA	24-Aug	Jul	3.90%	-4.00%	--
Industrial Production YoY	24-Aug	Jul	7.60%	6.40%	--
<b>Taiwan</b>	<b>Date</b>	<b>Period</b>	<b>Prior</b>	<b>Cons.</b>	<b>Actual</b>
Export Orders (YoY)	20-Aug	Jul	-2.62%	-2.98%	-4.39%
Unemployment Rate - sa	22-Aug	Jul	4.24%	4.30%	4.25%
Industrial Production (YoY)	23-Aug	Jul	-2.44%	-1.90%	-0.02%
<b>Thailand</b>	<b>Date</b>	<b>Period</b>	<b>Prior</b>	<b>Cons.</b>	<b>Actual</b>
Gross Domestic Product SA (QoQ)	20-Aug	2Q	11.00%	2.00%	3.30%
Gross Domestic Product (YoY)	20-Aug	2Q	0.30%	3.10%	4.20%
<b>Vietnam</b>	<b>Date</b>	<b>Period</b>	<b>Prior</b>	<b>Cons.</b>	<b>Actual</b>
CPI (YoY)	24-Aug	Aug	5.35%	--	--
Exports YTD (YoY)	24-31 AUG	Aug	19.00%	--	--
Retail Sales YTD (YoY)	26-31 AUG	Aug	18.70%	--	--

## Calendar Events

There are no calendar events scheduled for this week.

## Markets Data

STOCK MARKETS	INDEX	Last price	% change over a day	% change over a week	Year to date	% change over 1 Y
	China - Shanghai Comp.	2113.1	0.3	0.0	-3.9	-17.3
	Hong Kong - Hang Seng	20132.2	1.2	0.8	9.2	1.3
	Taiwan - Weighted	7505.2	0.1	0.2	6.1	-0.6
	Japan - Nikkei 225	9178.1	0.5	0.9	8.5	5.1
	Korea - Kospi	1942.5	0.4	-0.8	6.4	9.3
	India - Sensex 30	17856.6	0.1	0.7	15.5	8.2
	Australia - SPX/ASX 200	4383.7	0.2	1.2	8.1	5.0
	Singapore - Strait Times	3056.4	0.2	-0.2	15.5	10.5
	Indonesia - Jakarta Comp	4162.7	0.1	0.5	8.9	5.3
	Thailand - SET	1237.6	0.3	1.1	20.7	17.1
	Malaysia - KLCI	1651.6	0.0	0.1	7.9	11.4
Philippines - Manila Comp.	5202.8	1.0	-1.2	19.0	18.9	

Last update: today, 17.45 Hong Kong time

FOREIGN EXCHANGE MARKETS	CURRENCY	Spot	% change over a day	% change over a week	Forward 3-month	Forward 12-month
	China (CNY/USD)	6.35	-0.02	0.20	6.36	6.44
	Hong Kong (HKD/USD)	7.76	0.01	0.01	7.75	7.75
	Taiwan (TWD/USD)	29.9	0.14	0.19	29.88	29.61
	Japan (JPY/USD)	78.58	0.00	0.98	78.52	78.18
	Korea (KRW/USD)	1131	0.47	0.31	1136	1148
	India (INR/USD)	55.2	0.53	1.05	56.12	58.60
	Australia (USD/AUD)	1.05	-0.11	-0.17	0.96	0.98
	Singapore (SGD/USD)	1.24	0.23	0.39	1.24	1.24
	Indonesia (IDR/USD)	9494	0.12	0.19	9606	10024
	Thailand (THB/USD)	31.2	0.38	0.93	31.35	31.75
	Malaysia (MYR/USD)	3.10	0.77	1.03	3.11	3.14
Philippines (PHP/USD)	42.1	0.50	0.39	42.14	42.44	

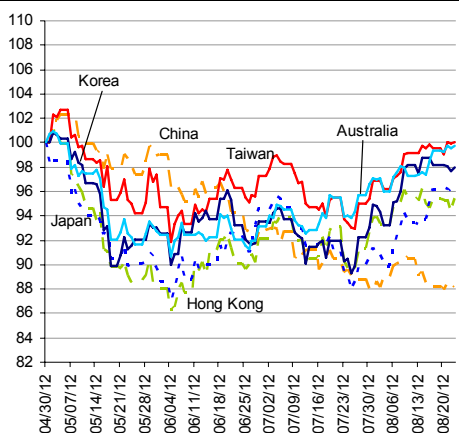
Last update: today, 17.45 Hong Kong time.

INTERBANK RATES	INDEX	Rate	net change over a day	net change over a week	net change over a month
	China (SHIBOR/7D)	3.80	0.05	-0.15	0.25
	Hong Kong (HIBOR/1W)	0.13	0.00	0.00	0.00
	Taiwan (TAIBOR/1W)	0.63	0.00	0.00	-0.01
	Japan (TIBOR/1Y)	0.76	0.00	0.01	0.01
	Korea (KORIBOR/1M)	3.04	0.00	0.00	-0.03
	India (MIBOR/7D)	4.10	0.30	0.55	0.53
	Singapore (SIBOR/1W)	0.25	0.00	0.00	0.00
	Indonesia (JIBOR/1W)	4.37	-0.12	-0.12	0.20
	Thailand (BIBOR/1W)	3.02	0.00	0.00	0.00
	Malaysia (KLIBOR/1W)	2.90	0.00	0.00	0.00
	Philippines (PHIBOR/1W)	1.69	-0.25	-0.44	-0.44

Last update: today, 17.45 Hong Kong time

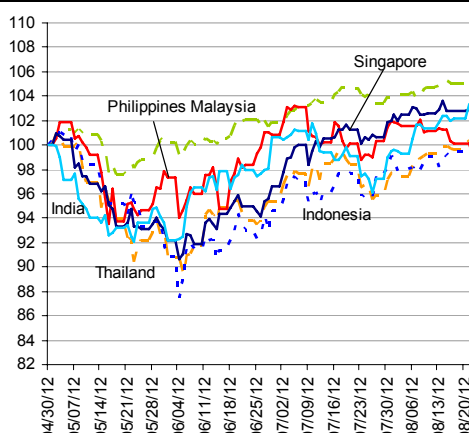
# Charts

Chart 9  
Stock Markets



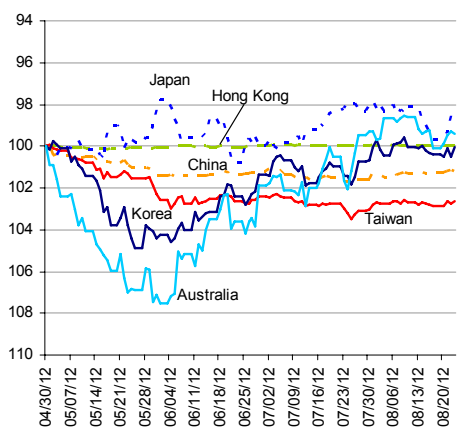
Source: BBVA Research and Bloomberg

Chart 10  
Stock Markets



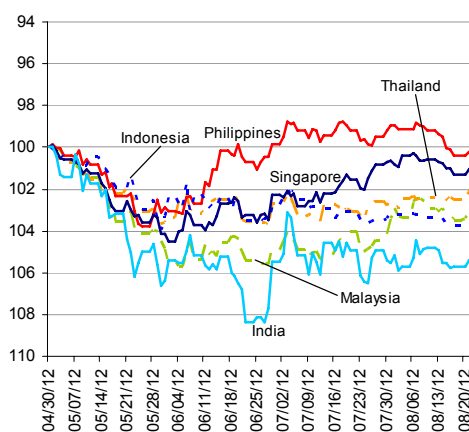
Source: BBVA Research and Bloomberg

Chart 11  
Foreign Exchange Markets



Source: BBVA Research and Bloomberg

Chart 12  
Foreign Exchange Markets



Source: BBVA Research and Bloomberg

Stephen Schwartz  
Chief Economist for Asia  
[stephen.schwartz@bbva.com.hk](mailto:stephen.schwartz@bbva.com.hk)

Fielding Chen  
Senior Economist  
[fielding.chen@bbva.com.hk](mailto:fielding.chen@bbva.com.hk)

Le Xia  
Senior Economist (China)  
[xia.le@bbva.com.hk](mailto:xia.le@bbva.com.hk)

Zhigang Li  
Senior Economist (China)  
[zhigang.li@bbva.com.hk](mailto:zhigang.li@bbva.com.hk)

Sumedh Deorukhkar  
Senior Economist (India, Mumbai)  
[sumedh.deorukhkar@grupobbva.com](mailto:sumedh.deorukhkar@grupobbva.com)

Jeffrey Cantwell  
Economist  
[jeffrey.cantwell@bbva.com.hk](mailto:jeffrey.cantwell@bbva.com.hk)

George Xu  
Economist  
[george.xu@bbva.com.hk](mailto:george.xu@bbva.com.hk)

Richard Li  
Asian FX Chief Strategist  
[richard.li@bbva.com.hk](mailto:richard.li@bbva.com.hk)

William Fitchett  
Economist  
[william.fitchett@bbva.com.hk](mailto:william.fitchett@bbva.com.hk)



RESEARCH



43/F., Two IFC, 8 Finance Street, Central, Hong Kong | Tel.: +852 2582 3111 | [www.bbva.com.hk](http://www.bbva.com.hk)

Before you print this message please consider if it is really necessary.

This email and its attachments are subject to the confidentiality terms established in the corresponding regulations and are intended for the sole use of the person or persons indicated in the header. They are for internal use only and cannot be distributed, copied, conveyed or furnished to third parties without prior written consent from BBVA. If this message has been received erroneously, it is forbidden to read, use or copy any of the contents and you are asked to inform BBVA immediately by forwarding the email to the sender and eliminating it thereafter.

BBVA will continue to provide our readers up-to-date reports by emails, but you can also register directly on our website where you can find a full list of our latest reports & presentations <http://serviciodeestudios.bbva.com/KETD/ketd/ing/index.jsp>

If you wish to be excluded from this mailing list, please write to us on [research.emergingmarkets@bbva.com.hk](mailto:research.emergingmarkets@bbva.com.hk) and we shall immediately take you off the list.