



# Daily Flash

## Asia

### China's property prices rise for a fifth consecutive month

According to data from the National Bureau of Statistics (NBS) that was released on Sunday, China's housing prices increased by 0.11% m/m in October, after a 0.05% increase in September, marking the fifth consecutive month prices have risen. For China, rising housing prices may present a constraint on further monetary easing (currently, the benchmark policy rate is 6.0%). Worth noting, during last week's 18th National Party Congress, Housing Minister Jiang Weixin said that the government will maintain close watch over the property sector in the near future, as policymakers want to avoid overheating.

### Thailand's 3Q GDP growth slows...

Thailand posted 3.0% y/y GDP growth in Q3 (consensus: 3.0% y/y), a slowdown from 4.4% y/y growth in the previous quarter. Domestic demand remained resilient, with investment and consumption growing strongly by 15.5% y/y and 6.5% y/y respectively. However, exports declined by -3.0% y/y, and continue to pose the strongest risk to Thailand's growth in the short-term. Note that today's outturn comes after the Bank of Thailand cut interest rates by 25 bps at its last meeting due to concerns about a growth slowdown on worsening external conditions. We anticipate another 25bps cut in the interest rate when the central bank holds its last meeting of 2012 next Wednesday (Nov 28). We also expect growth to strengthen considerably in Q4 on base effects after last year's devastating floods, bringing full-year GDP growth to 5.0%.

### ...as US President arrives on three-day tour of Southeast Asia

The release of Thailand's GDP data comes one day after US President Barack Obama arrived in Bangkok to commence a three-country visit of Southeast Asia (along with Thailand, the President also visits Myanmar and Cambodia). President Obama met with Thailand's PM to discuss political and economic issues, including important international trade deals such as the Trans Pacific Partnership. President Obama continues his visit in Myanmar today before flying to Cambodia, where the leaders of ASEAN are gathering at a summit along with representatives from China, Japan, Korea, India, Australia and New Zealand in order to engage in discussions regarding an eventual trade pact and increased political cooperation.

### Briefly noted:

- **Hong Kong's three-month average employment rate edged up to 3.4% for the August-October period from 3.3% over July-September**, above the market's expectation (consensus: 3.3%). The uptick in the employment rate was mainly driven by externally-focused sectors such as accommodation services and transportation.

Stephen Schwartz  
Chief Economist for Asia  
stephen.schwartz@bbva.com.hk  
+852 2582 3218

Jeffrey Cantwell, CFA  
Economist  
jeffrey.cantwell@bbva.com.hk  
+852 2582 3173

William Fitchett  
Economist  
william.fitchett@bbva.com.hk  
+852 2582 3246

With contributions from the BBVA Research Asia Team

## Calendar Indicators

<b>China</b>	<b>Date</b>	<b>Period</b>	<b>Prior</b>	<b>Cons.</b>	<b>Actual</b>
China October Property Prices	18-Nov	Oct	--	--	--
HSBC Flash Manufacturing PMI	22-Nov	Nov	49.5	--	--
<b>Hong Kong</b>	<b>Date</b>	<b>Period</b>	<b>Prior</b>	<b>Cons.</b>	<b>Actual</b>
Unemployment Rate SA	19-Nov	Oct	3.30%	3.30%	3.40%
CPI - Composite Index (YoY)	22-Nov	Oct	3.80%	--	--
<b>Japan</b>	<b>Date</b>	<b>Period</b>	<b>Prior</b>	<b>Cons.</b>	<b>Actual</b>
All Industry Activity Index (MoM)	20-Nov	Sep	0.10%	-0.60%	--
Merchnds Trade Balance Total	21-Nov	Oct	-¥558.6B	-¥365.0B	--
Merchnds Trade Exports YoY	21-Nov	Oct	-10.3	-4.8	--
<b>Malaysia</b>	<b>Date</b>	<b>Period</b>	<b>Prior</b>	<b>Cons.</b>	<b>Actual</b>
CPI YoY	23-Nov	Oct	1.30%	--	--
<b>Philippines</b>	<b>Date</b>	<b>Period</b>	<b>Prior</b>	<b>Cons.</b>	<b>Actual</b>
Balance of Payments	19-Nov	Oct	\$751M	--	\$604M
GDP sa (QoQ)	23-Nov	3Q	0.20%	--	--
GDP (YoY)	23-Nov	3Q	5.90%	--	--
<b>Singapore</b>	<b>Date</b>	<b>Period</b>	<b>Prior</b>	<b>Cons.</b>	<b>Actual</b>
CPI (MOM) - NSA	23-Nov	Oct	0.60%	--	--
CPI (YoY)	23-Nov	Oct	4.70%	--	--
<b>Taiwan</b>	<b>Date</b>	<b>Period</b>	<b>Prior</b>	<b>Cons.</b>	<b>Actual</b>
Export Orders (YoY)	20-Nov	Oct	1.90%	-0.50%	--
Unemployment Rate - sa	22-Nov	Oct	4.30%	4.30%	--
Industrial Production (YoY)	23-Nov	Oct	3.00%	3.21%	--
GDP - Constant Prices (YoY)	23-Nov	3Q F	1.02%	1.00%	--
<b>Thailand</b>	<b>Date</b>	<b>Period</b>	<b>Prior</b>	<b>Cons.</b>	<b>Actual</b>
Gross Domestic Product SA (QoQ)	19-Nov	3Q	3.30%	-0.30%	1.20%
Gross Domestic Product (YoY)	19-Nov	3Q	4.20%	3.00%	3.00%
Customs Exports (YoY)	23-28 NOV	Oct	0.20%	--	--

# Indicator of the Week

## Taiwan: Export Orders for October (November 20th)

Forecast: 0.2% y/y	Consensus: -0.5% y/y	Prior: 1.9% y/y
--------------------	----------------------	-----------------

As a 2-3 month leading indicator of external demand, Taiwan's export orders will be watched for signs of whether a recent pickup in export from the region is sustainable. China's exports for September and October (+11.6% y/y) surprised to the upside, as have Korea's. After a strong September outturn, Taiwan's October exports, however, registered a disappointing -1.9% y/y. We expect new orders to be flat in October, due to continued external headwinds from Europe and, increasingly, Japan. On the other hand, orders from China are likely to hold up, as the economy appears to be gathering speed from increasingly domestic policy support.

# Calendar Events

<b>Japan - BOJ Target Rate, November 20</b> We expect the policy stance to remain unchanged	<b>Current</b> 0.10%	<b>Consensus</b> 0.10%	<b>New</b> --
--	-------------------------	---------------------------	------------------

## Markets Data

STOCK MARKETS	INDEX	Last price	% change over a day	% change over a week	Year to date	% change over 1 Y
	China - Shanghai Comp.	2017.0	0.1	-3.0	-8.3	-16.5
	Hong Kong - Hang Seng	21262.1	0.5	-0.8	15.3	15.0
	Taiwan - Weighted	7129.0	0.0	-1.9	0.8	-1.4
	Japan - Nikkei 225	9153.2	1.4	5.5	8.3	9.3
	Korea - Kospi	1878.1	0.9	-1.2	2.9	2.1
	India - Sensex 30	18320.4	0.1	-2.8	18.5	11.9
	Australia - SPX/ASX 200	4361.4	0.6	-1.9	7.5	4.4
	Singapore - Strait Times	2950.9	0.2	-1.9	11.5	8.1
	Indonesia - Jakarta Comp	4313.4	-0.9	-0.3	12.9	13.1
	Thailand - SET	1282.4	0.2	-0.9	25.1	30.3
	Malaysia - KLCI	1623.3	-0.4	-1.1	6.0	11.6
	Philippines - Manila Comp.	5449.6	0.2	-0.4	24.6	26.7

Last update: today, 17:00 Hong Kong time

FOREIGN EXCHANGE MARKETS	CURRENCY	Spot	% change over a day	% change over a week	Forward 3-month	Forward 12-month
	China (CNY/USD)	6.23	0.01	-0.09	6.29	6.34
	Hong Kong (HKD/USD)	7.75	0.01	-0.02	7.75	7.75
	Taiwan (TWD/USD)	29.2	0.14	-0.58	28.98	28.72
	Japan (JPY/USD)	81.24	0.10	-2.14	81.15	80.85
	Korea (KRW/USD)	1087	0.48	0.15	1092	1103
	India (INR/USD)	55.0	0.27	-0.27	55.89	58.16
	Australia (USD/AUD)	1.04	0.36	-0.50	0.97	0.99
	Singapore (SGD/USD)	1.23	0.11	-0.24	1.23	1.23
	Indonesia (IDR/USD)	9632	-0.03	0.06	9687	10029
	Thailand (THB/USD)	30.7	0.03	-0.26	30.90	31.32
	Malaysia (MYR/USD)	3.06	0.20	0.00	3.08	3.12
	Philippines (PHP/USD)	41.2	0.38	-0.18	41.17	41.19

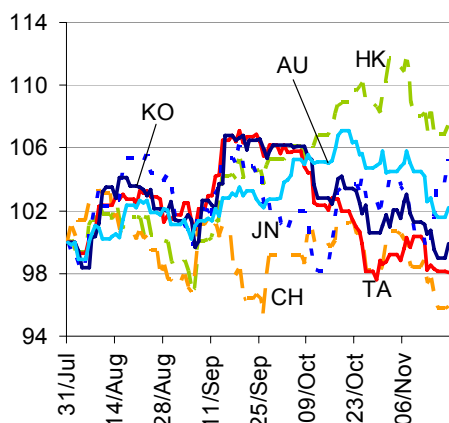
Last update: today, 17:00 Hong Kong time.

INTERBANK RATES	INDEX	Rate	net change over a day	net change over a week	net change over a month
	China (SHIBOR/7D)	3.26	0.34	-0.10	0.57
	Hong Kong (HIBOR/1W)	0.13	0.00	0.00	-0.02
	Taiwan (TAIBOR/1W)	0.59	0.00	0.00	-0.03
	Japan (TIBOR/1Y)	0.76	0.00	0.01	0.01
	Korea (KORIBOR/1M)	2.78	0.00	0.00	0.00
	India (MIBOR/7D)	3.25	0.35	-0.23	-0.35
	Singapore (SIBOR/1W)	0.25	0.00	0.00	0.00
	Indonesia (JIBOR/1W)	4.28	0.00	0.00	0.00
	Thailand (BIBOR/1W)	2.78	0.00	0.00	0.00
	Malaysia (KLIBOR/1W)	2.90	0.00	0.00	0.00
	Philippines (PHIBOR/1W)	2.44	0.06	0.94	1.69

Last update: today, 17:00 Hong Kong time

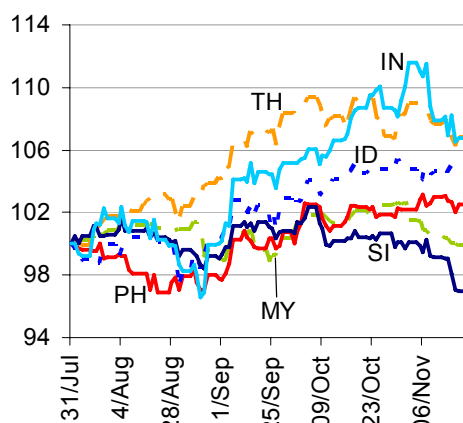
# Charts

Chart 1  
Stock Markets



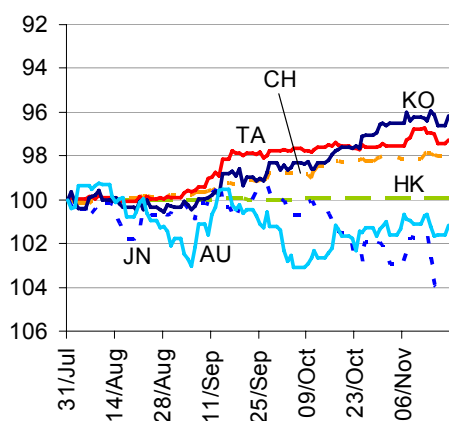
Source: BBVA Research and Bloomberg

Chart 2  
Stock Markets



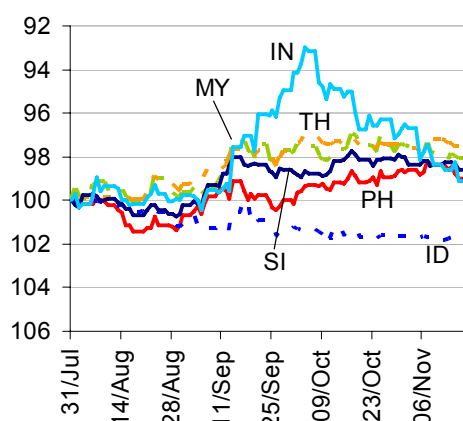
Source: BBVA Research and Bloomberg

Chart 3  
Foreign Exchange Markets



Source: BBVA Research and Bloomberg

Chart 4  
Foreign Exchange Markets



Source: BBVA Research and Bloomberg

Stephen Schwartz  
Chief Economist for Asia  
[stephen.schwartz@bbva.com.hk](mailto:stephen.schwartz@bbva.com.hk)

Zhigang Li  
Senior Economist (China)  
[zhigang.li@bbva.com.hk](mailto:zhigang.li@bbva.com.hk)

George Xu  
Economist  
[george.xu@bbva.com.hk](mailto:george.xu@bbva.com.hk)

Fielding Chen  
Senior Economist  
[fielding.chen@bbva.com.hk](mailto:fielding.chen@bbva.com.hk)


Sumedh Deorukhkar  
Senior Economist (India, Mumbai)  
[sumedh.deorukhkar@grupobbva.com](mailto:sumedh.deorukhkar@grupobbva.com)

Richard Li  
Asian FX Chief Strategist  
[richard.li@bbva.com.hk](mailto:richard.li@bbva.com.hk)

Le Xia  
Senior Economist (China)  
[xia.le@bbva.com.hk](mailto:xia.le@bbva.com.hk)

Jeffrey Cantwell, CFA  
Economist  
[jeffrey.cantwell@bbva.com.hk](mailto:jeffrey.cantwell@bbva.com.hk)

William Fitchett  
Economist  
[william.fitchett@bbva.com.hk](mailto:william.fitchett@bbva.com.hk)

**BBVA** | RESEARCH  | 43/F., Two IFC, 8 Finance Street, Central, Hong Kong | Tel.: +852 2582 3111 | [www.bbva.com.hk](http://www.bbva.com.hk)

Before you print this message please consider if it is really necessary.

This email and its attachments are subject to the confidentiality terms established in the corresponding regulations and are intended for the sole use of the person or persons indicated in the header. They are for internal use only and cannot be distributed, copied, conveyed or furnished to third parties without prior written consent from BBVA. If this message has been received erroneously, it is forbidden to read, use or copy any of the contents and you are asked to inform BBVA immediately by forwarding the email to the sender and eliminating it thereafter.

BBVA will continue to provide our readers up-to-date reports by emails, but you can also register directly on our website where you can find a full list of our latest reports & presentations <http://serviciodeestudios.bbva.com/KETD/ketd/ing/index.jsp>

If you wish to be excluded from this mailing list, please write to us on [research.emergingmarkets@bbva.com.hk](mailto:research.emergingmarkets@bbva.com.hk) and we shall immediately take you off the list.