

EAGLEs Quarterly Report

Cross-Country Emerging Markets Analysis

Hong Kong,
Fourth Quarter 2011
Economic Analysis

- **Economic growth within EAGLEs has been dragged down by global headwinds.** The persisting European debt crisis and the faltering growth in the US have weakened demand for exports hurting EAGLEs industrial production. **In China overheating concerns have diminished while latest activity indicators show an increasing deceleration although still consistent with a soft-landing scenario.**
- **External imbalances have eased among most of the EAGLEs.** Export growth has moderated as external demand slows. In Turkey, the current account deficit has widened raising concerns about their vulnerability to a sudden stop of capital flows.
- **Inflationary pressures have receded** while commodity prices have slightly decreased. In the short run, **Central Banks are more likely to change their balance of risks towards supporting economic activity.** Turkey, Brazil and Indonesia were the first among the EAGLEs to cut their reference interest rates.
- The worsening of the European debt crisis, concerns about growth in the US and political unrest in MENA increased global risk aversion and raised EAGLEs' risk premiums. **Stock markets fell driven by capital outflows and all EAGLEs currencies bar the RMB depreciated.**

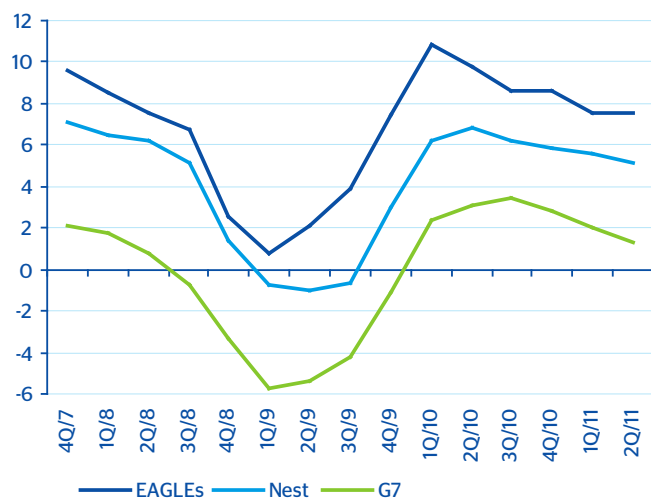
Activity	2	➔
External Sector	4	➔
Consumer Prices	6	➔
Monetary Policy	7	➔
Domestic Credits	8	➔
Financial Markets	10	➔
Statistical Annex	11	➔

Closing date: December 2nd, 2011

Activity: GDP

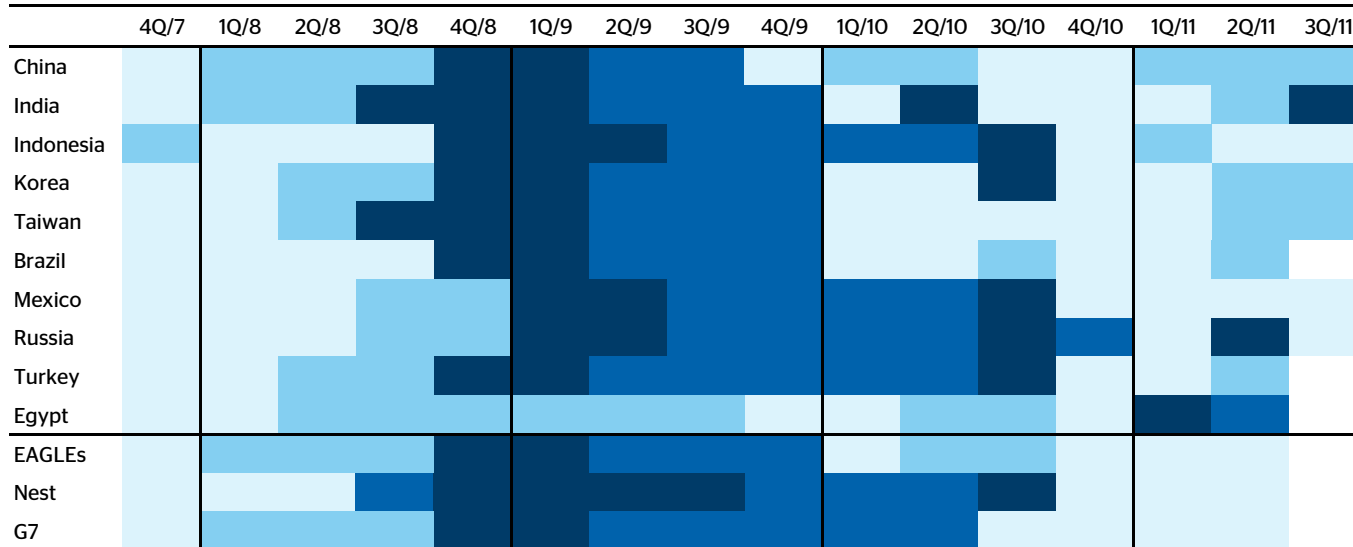
- Economic activity has slowed down reducing the risks of overheating.
- Diminished global demand has impacted Asian economies primarily dependent on exports.
- Nevertheless EAGLEs continue outperforming when compared to G7 economies.

Real GDP nsa YoY percentage point change



Source: BBVA Research and Haver

Activity: GDP nsa YoY percentage point change



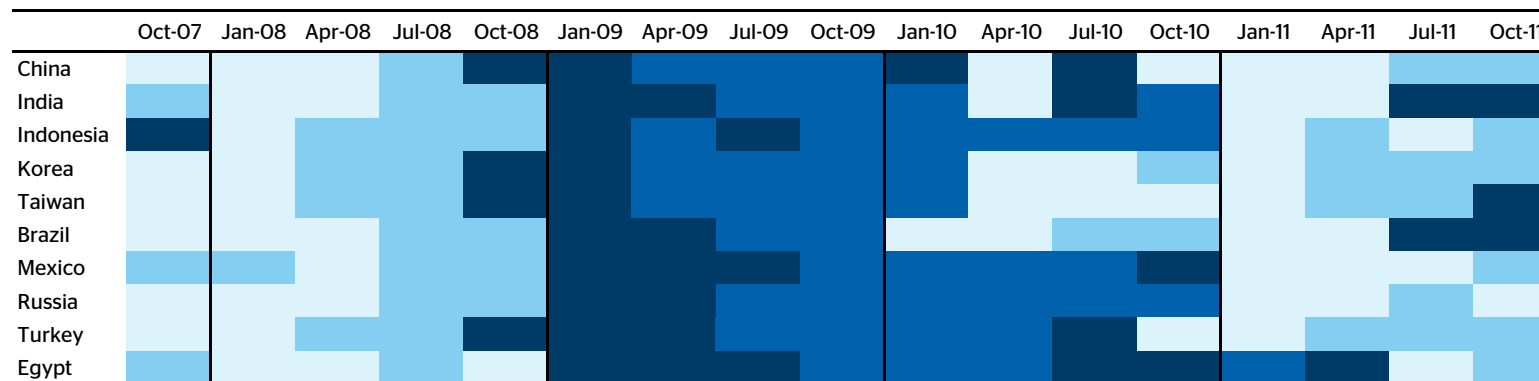
Source: BBVA Research and Haver

Light blue: Above trend and increasing
Medium blue: Above trend and decreasing

Dark blue: Below trend and increasing
Darkest blue: Below trend and decreasing

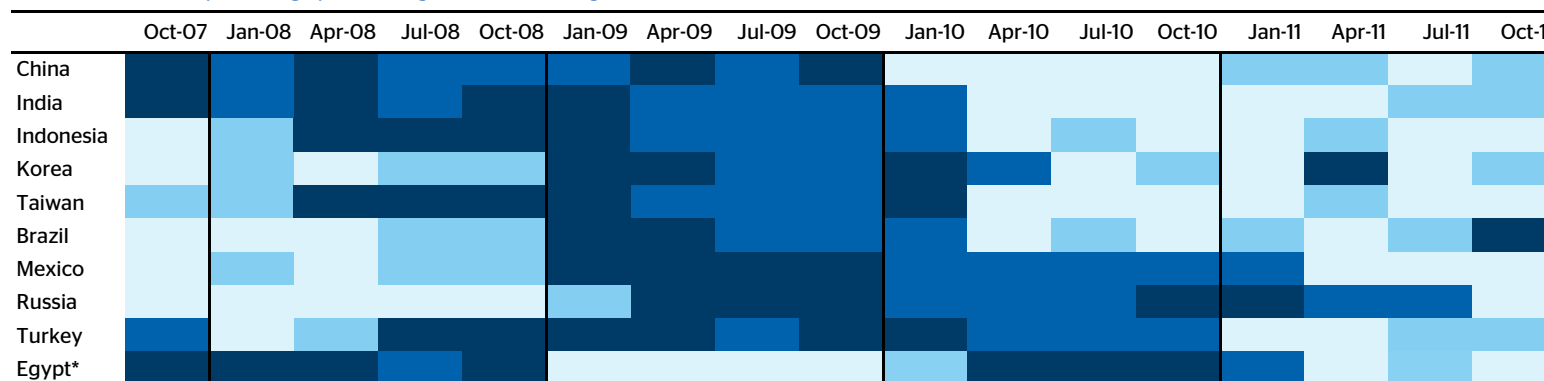
Activity: Industrial Production & Retail Sales

Industrial Output nsa YoY percentage point change (3-month average)



Source: BBVA Research and Haver

Retail Sales nsa YoY percentage point change (3-month average)



Note: India: Motor Vehicle Sales: Total (3-month moving average); Turkey: Registered Motor Vehicles (Units) (3-month moving average); Egypt: Consumer Confidence Index

Source: BBVA Research and Haver

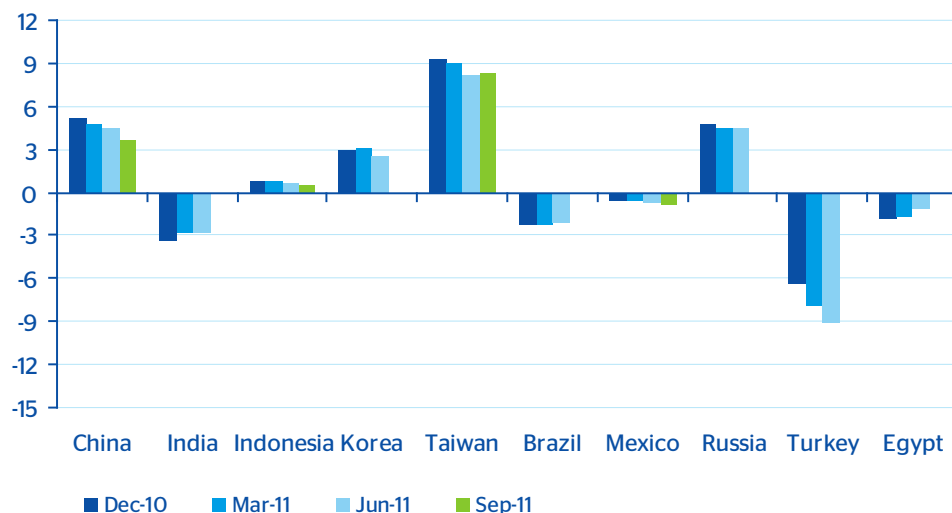


- Weaker external demand explains industrial production slowdown in EAGLEs economies and is a leading indicator of a weaker activity during Q4.
- In most of the EAGLEs domestic demand still holds strong, giving support to economic growth.

External Sector: Current Account & Trade Balance

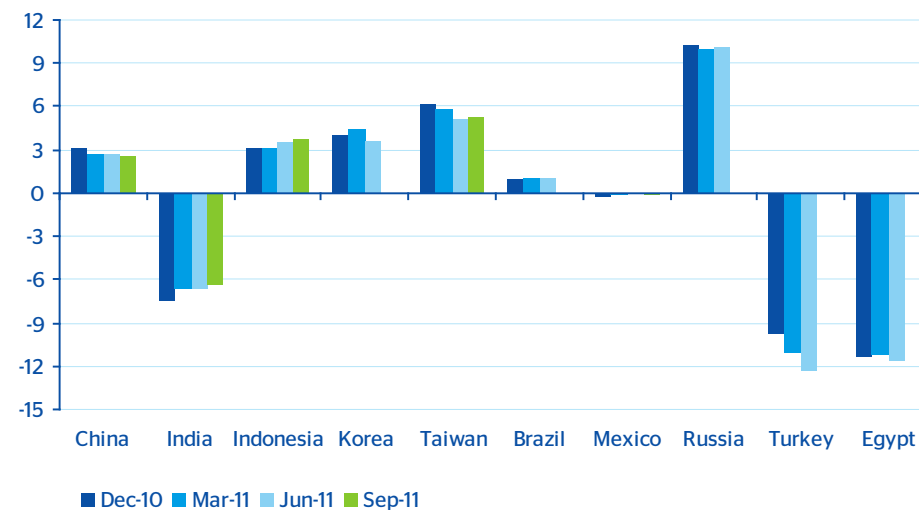
- Most of the EAGLEs hold strong external fundamentals except for Turkey.
- In some economies large trade deficits do not necessarily imply large external vulnerabilities.
- Global trade flows have been dragged down by a decline in developed markets demand and a backdrop of trade finance supply.

Current Account as % of GDP (accumulated for the last 4 quarters)



Note: Lack of data for Brazil, Egypt, India, Korea, Russia and Turkey in the last period
Source: BBVA Research and Haver

Trade Balance as % of GDP (accumulated for the last 4 quarters)

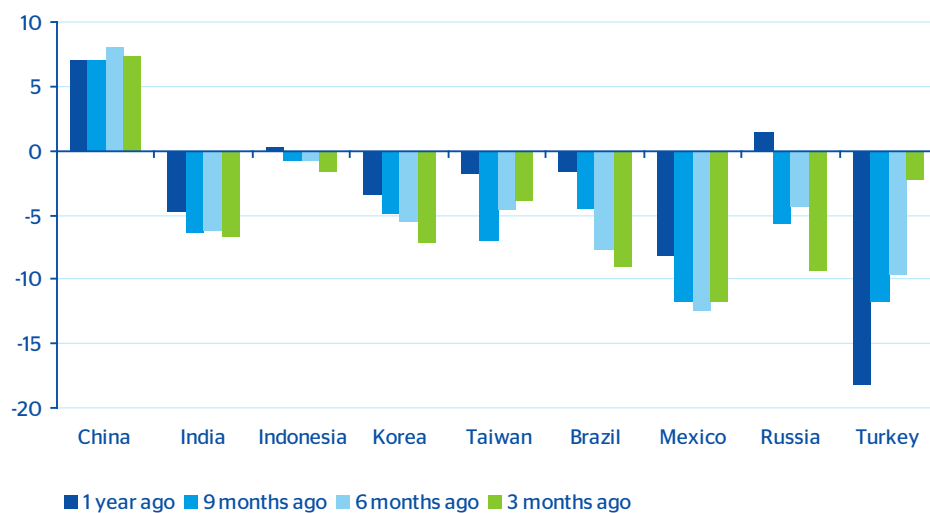


Note: Lack of data for Brazil, Egypt, Korea, Russia and Turkey in the last period
Source: BBVA Research and Haver

External Sector: Effective Exchange Rates

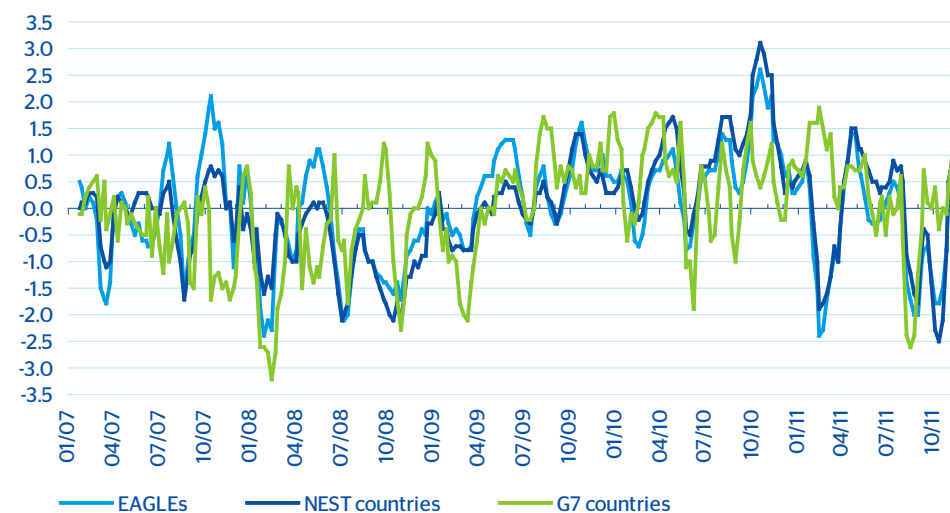
- All EAGLEs bar China have seen a depreciation of their real exchange rates which should contribute to further adjust their current external trade deficits or increase their trade surpluses.
- In recent months Emerging Markets have witnessed capital outflows to safe havens.

Change in the Effective Exchange Rate: Broad indices 2005 = 100
+ (-) indicates appreciation (depreciation) (%)



Note: Lack of data for Egypt
Source: BBVA Research and BIS

Equity and Bond flows: Standardized units for the 2007-2011 period (over 4-week average data)

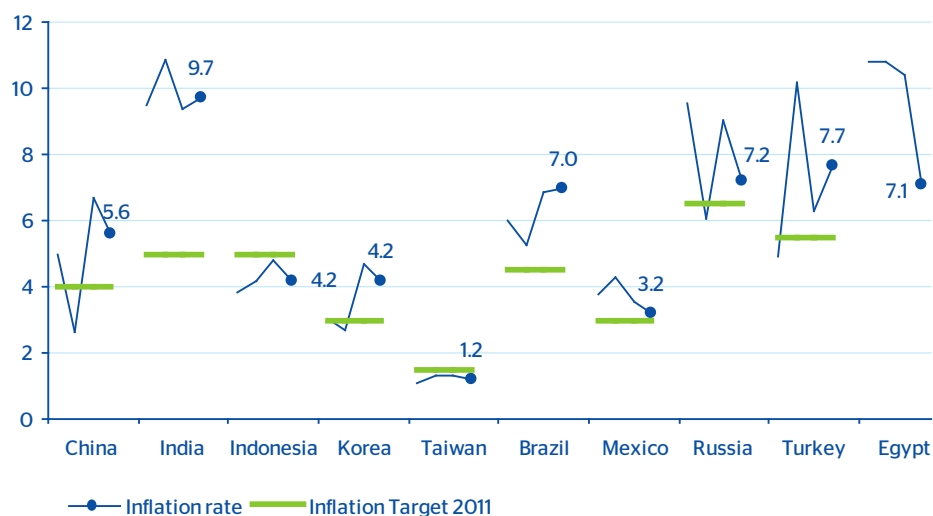


Source: BBVA Research and EPFR

Consumer Prices: Inflation

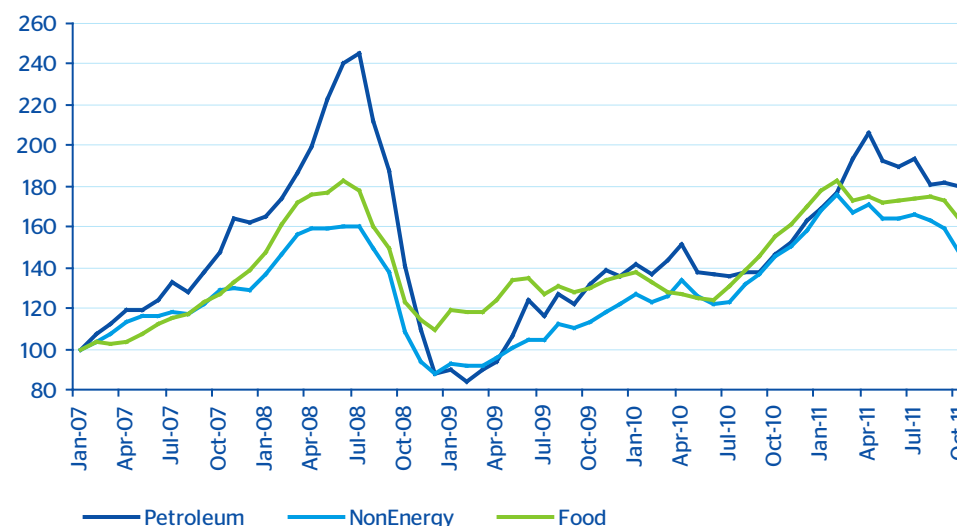
- Inflationary pressures have or are about to recede in most of the EAGLEs. Nevertheless, in some cases current rates are still above the target, thus not leaving ample room for a monetary policy stimulus.
- The slight decline in commodity prices should help to ease inflationary pressures in the following months.

Inflation Rates YoY percentage point change: (-9m, -6m, -3m, Current)



Note: Lack of inflation target for Egypt
Source: BBVA Research, Bloomberg and Haver

World Commodity Price Indexes: 2007=100

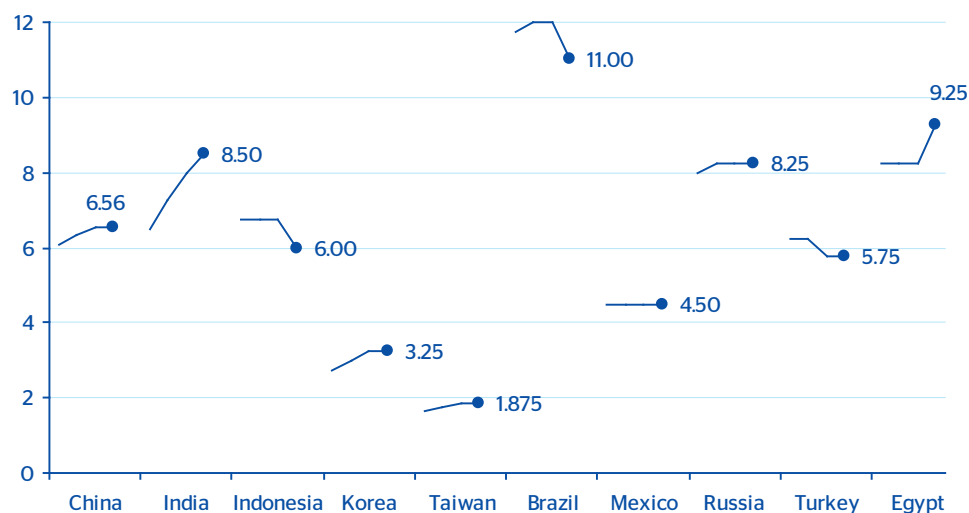


Source: BBVA Research and World Bank Commodity Prices

Monetary Policy: Policy Rates & Real Interest Rates

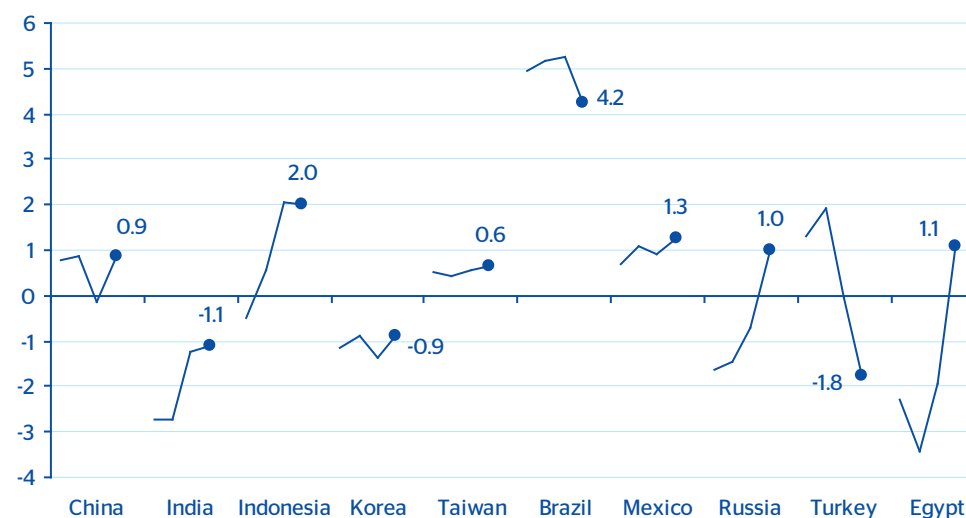
- Central Banks are changing their balance of risks towards slowing economic activity which may lead to monetary policy easing.
- However, this shift in monetary policy stance will take more time in those countries where global risk aversion is taking its toll in terms of capital outflows and depreciating currencies.

Central Bank Reference Rates (%): (-9m, -6m, -3m, Current)



Source: BBVA Research and Haver

Real Interest Rates (%): (-9m, -6m, -3m, Current)

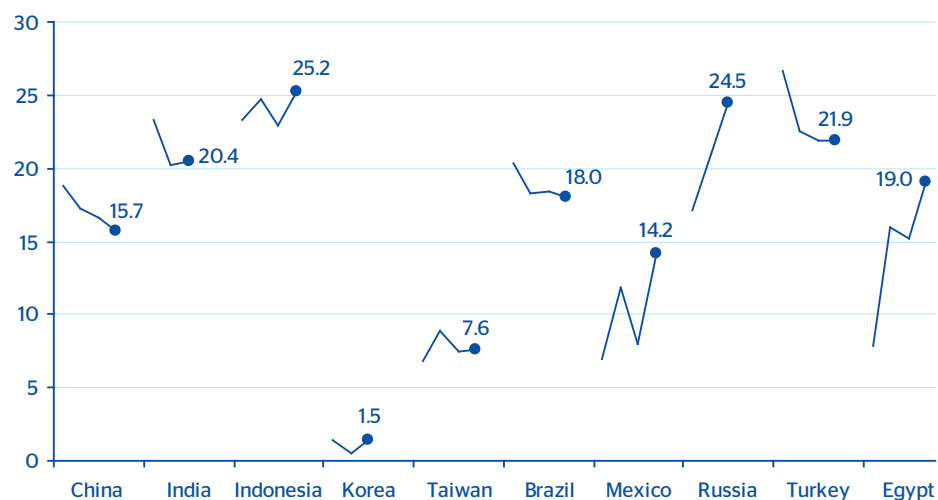


Source: BBVA Research and Haver

Domestic Credit: Lending

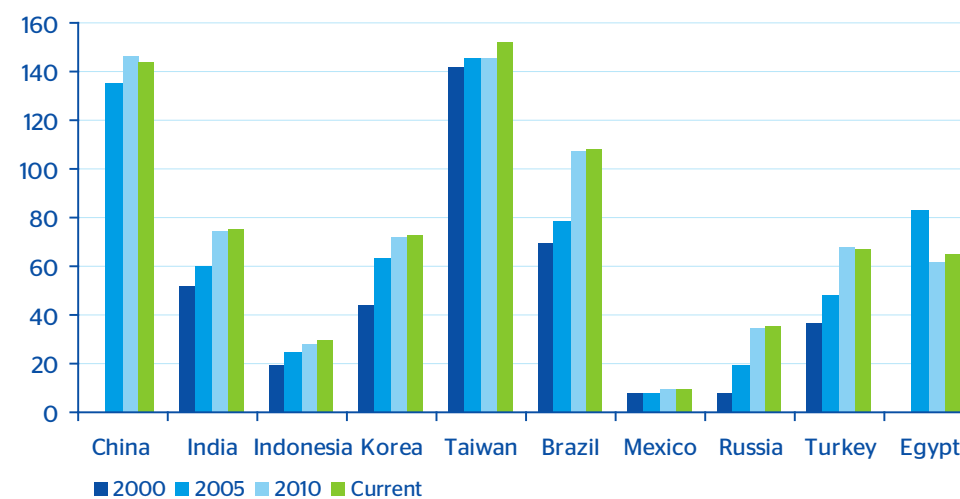
- Lending has kept its dynamic growth pace anticipating a strong performance of domestic demand which should give support to economic activity in the following quarters.
- In some countries Central Banks have been concerned about high credit growth rates which may pose a threat to financial stability.

Domestic Credits YoY percentage point change: (4Q10, 1Q11, 2Q11, 3Q11)



Note: Lack of data for India, Korea and Russia in 3Q 2011
Source: BBVA Research and Haver

Domestic Credits as % of GDP

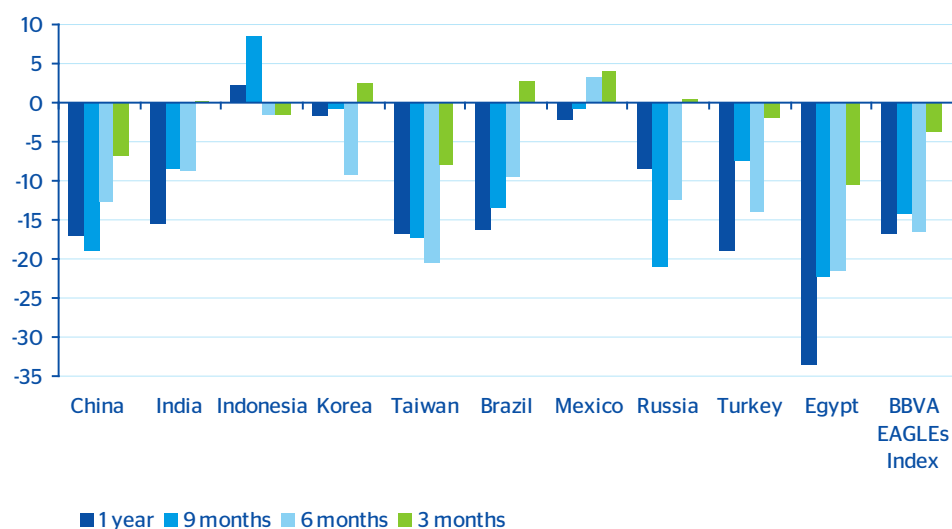


Note: Lack of data for China and Egypt in the year 2000
Source: BBVA Research and Haver

Financial Markets: Stock Markets & Nominal Exchange Rates

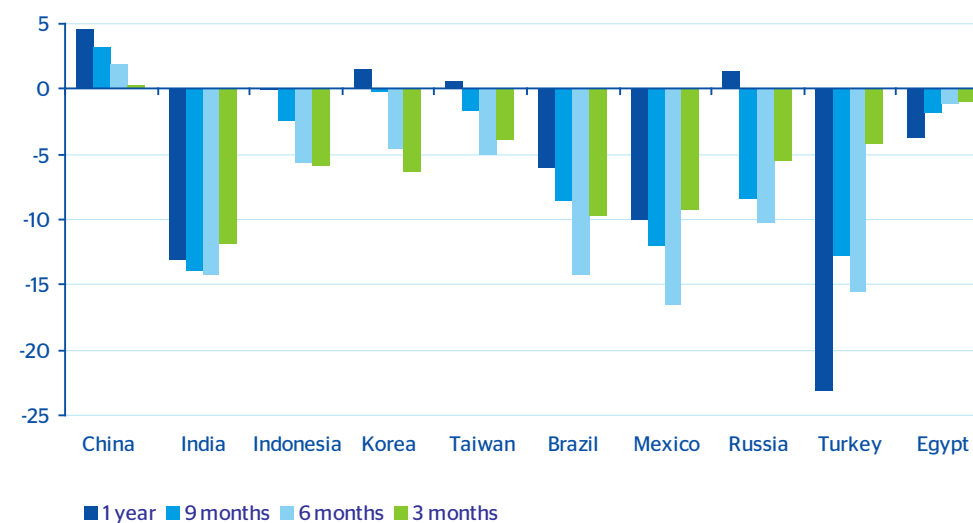
- Stock and FX markets performance are strongly correlated with the rise in global risk aversion.
- Corrections in equity markets have reduced the risk of asset bubbles.

Stock Market Returns (%)



Source: BBVA Research and Bloomberg

FX Returns (%)

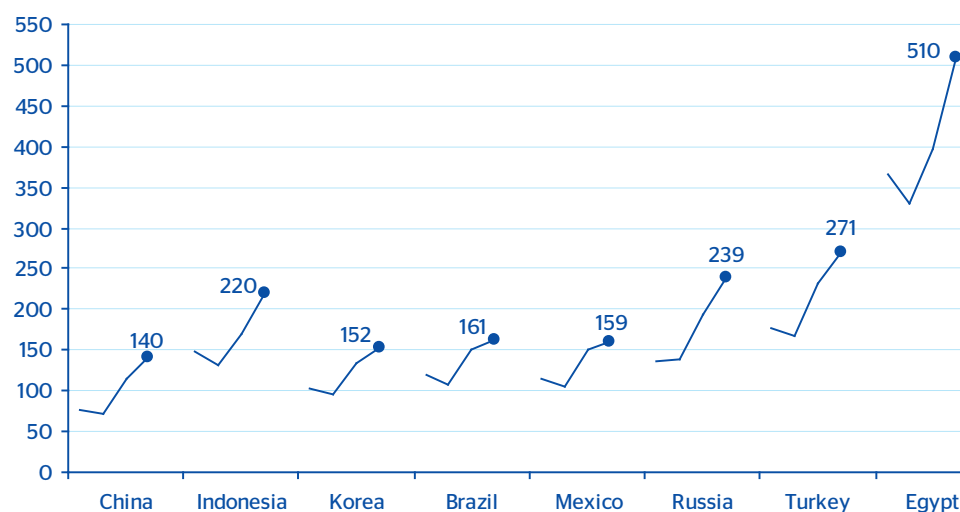


Source: BBVA Research and Bloomberg

Financial Markets: Risk Premiums & Sovereign Credit Ratings

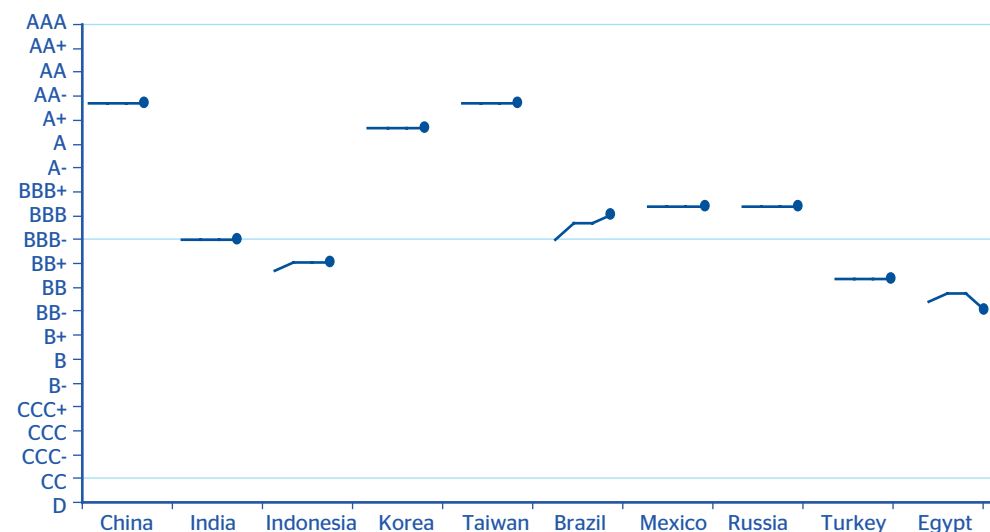
- All EAGLEs bar Egypt, where social unrest has recently risen, have maintained or improved their risk ratings.
- Nevertheless, their risk premiums have increased as a consequence of higher global risk aversion.

5 Year CDS (bp): (-9m, -6m, -3m, Current)



Note: Lack of data for India and Taiwan
Source: BBVA Research and Bloomberg

Sovereign Credit Ratings: (-9m, -6m, -3m, Current)



Note: For each country an average is calculated from ratings done by Moody's, S&P and Fitch after converting them into a numerical scale from 0 ('D') to 20 ('AAA')
Source: BBVA Research and Bloomberg

Statistical Annex

Activity

Table 1
Retail Sales (% YoY Real Growth)

Country	2010										2011									
	Mar	Apr	May	Jun	Jul	Aug	Sep	Oct	Nov	Dec	Jan	Feb	Mar	Apr	May	Jun	Jul	Aug	Sep	Oct
China	18.9	20.1	15.4	20.7	19.6	20.4	19.9	16.9	16.7	16.3	14.2	6.3	13.7	12.5	11.7	10.8	10.2	10.0	10.3	9.7
India	37.7	28.9	32.2	33.5	32.8	25.5	20.4	42.6	14.5	27.7	19.8	22.1	19.4	23.9	15.6	14.6	12.4	15.0	21.9	0.8
Indonesia	28.8	26.6	26.7	24.9	24.6	32.0	21.1	18.5	18.8	21.8	20.0	18.0	16.4	16.0	16.0	19.9	23.8	33.4	18.1	30.8
Korea	4.7	3.1	4.6	6.2	6.9	4.4	5.4	3.4	5.4	6.2	9.7	-2.0	3.1	4.6	5.4	4.8	3.4	4.3	1.2	3.6
Taiwan	5.7	7.5	6.9	6.1	7.4	7.6	8.0	7.3	4.1	1.8	21.6	-2.2	7.2	5.4	2.2	4.2	4.3	2.0	5.3	3.5
Brazil	15.7	9.2	10.2	11.4	11.1	10.5	12.0	8.7	9.9	10.2	8.2	8.5	4.0	10.2	6.3	7.1	7.1	6.3	5.3	
Mexico	2.3	-0.1	5.0	1.4	1.9	4.4	4.0	4.3	2.3	2.7	3.0	2.7	1.0	4.9	0.9	4.8	3.1	2.7	4.7	
Russia	4.7	6.1	7.2	8.0	8.9	9.1	7.5	7.5	8.1	7.0	4.0	6.2	5.2	6.0	6.0	6.0	5.9	8.0	9.3	8.9
Turkey	-4.5	9.1	-7.6	-22.8	47.5	69.7	12.7	40.0	148.7	91.0	90.9	54.3	77.2	31.2	60.9	39.9	67.9	-11.3	11.4	
Egypt	n.a.	n.a.	n.a.	n.a.	n.a.	n.a.	n.a.	n.a.	n.a.	n.a.	n.a.	n.a.	n.a.	n.a.	n.a.	n.a.	n.a.	n.a.	n.a.	n.a.

Note: India. Motor Vehicle Sales: Total. Turkey Registered Motor Vehicles: Units
Source: BBVA Research, Haver and CEIC

Table 2
Industrial Production (% YoY Growth)

Country	2010										2011									
	Mar	Apr	May	Jun	Jul	Aug	Sep	Oct	Nov	Dec	Jan	Feb	Mar	Apr	May	Jun	Jul	Aug	Sep	Oct
China	18.1	17.8	16.5	13.7	13.4	13.9	13.3	13.1	13.3	13.5	14.1	14.1	14.8	13.4	13.3	15.1	14.0	13.5	13.8	13.2
India	16.3	14.4	8.9	7.9	10.8	4.7	6.9	12.4	6.5	8.7	8.1	7.5	11.0	5.7	6.3	11.2	3.2	4.0	2.1	
Indonesia	3.5	3.8	4.1	5.0	5.5	4.6	0.8	4.9	4.7	7.1	7.5	2.1	7.5	4.2	5.4	5.0	5.4	1.6	10.1	
Korea	23.2	20.1	21.2	16.9	15.2	16.2	2.8	13.7	11.4	11.0	14.0	9.3	9.4	7.1	8.4	6.6	3.8	4.7	7.1	6.3
Taiwan	44.0	35.5	33.8	26.8	22.6	24.8	13.0	15.2	20.2	19.7	17.5	15.1	14.3	7.4	7.5	3.7	3.4	3.9	2.2	1.3
Brazil	20.5	17.3	14.8	11.2	8.7	8.5	6.3	1.6	5.1	2.1	2.4	7.7	-1.1	-1.8	2.5	0.8	-0.6	2.1	-1.6	-2.4
Mexico	13.8	12.0	15.1	15.4	8.5	11.6	8.8	4.6	7.3	6.0	8.0	7.4	7.4	2.8	6.8	4.6	4.5	4.5	4.8	
Russia	13.1	16.3	18.5	13.9	8.0	10.8	9.3	9.6	9.9	9.5	13.5	10.1	8.6	5.2	4.9	7.0	5.4	7.1	4.5	5.8
Turkey	24.3	18.6	15.9	10.5	9.2	10.9	10.9	11.4	10.1	18.5	20.6	14.6	10.1	9.2	8.8	7.7	7.2	5.0	12.8	
Egypt	6.7	8.2	8.1	20.4	6.2	3.8	8.7	4.8	8.1	10.0	-1.8	-14.5	-9.2	13.5	19.4	19.5	3.2	1.7	14.8	

Source: BBVA Research and Haver

Table 3
Consumer Confidence Index

Country	2010										2011										
	Mar	Apr	May	Jun	Jul	Aug	Sep	Oct	Nov	Dec	Jan	Feb	Mar	Apr	May	Jun	Jul	Aug	Sep	Oct	Nov
China	107.9	106.6	108.0	108.5	107.8	107.3	104.1	103.8	102.9	100.4	99.9	99.6	107.6	106.6	105.8	108.1	105.6	105.0	103.4	100.5	
India	57.8	57.2	59.0	57.3	57.6	57.2	55.1	57.2	58.4	56.7	56.8	57.9	57.9	58.0	57.5	55.3	53.6	52.6	50.4	52.0	51.0
Indonesia	101.9	105.6	106.3	104.8	99.0	98.1	101.8	106.2	102.2	103.0	105.6	106.4	107.1	106.9	105.3	109.0	111.8	110.6	115.0	116.2	114.3
Korea	110.0	110.0	111.0	112.0	112.0	110.0	109.0	108.0	110.0	109.0	108.0	105.0	98.0	100.0	104.0	102.0	102.0	99.0	99.0	100.0	103.0
Taiwan	74.3	78.7	76.0	77.8	78.6	79.7	80.1	80.2	81.7	83.2	86.8	85.9	83.7	85.8	85.4	85.3	86.8	86.9	85.6	84.0	
Brazil	112.3	113.0	115.3	117.0	117.4	120.4	122.5	123.1	126.2	124.2	125.4	123.1	120.8	115.4	113.9	115.7	121.0	117.3	114.3	117.6	121.0
Mexico	81.8	82.5	84.6	87.5	87.4	88.7	91.6	89.2	88.5	91.2	92.3	92.3	91.7	89.7	89.3	93.0	95.5	93.4	92.4	90.6	
Russia	78.0	77.0	82.0	82.0	82.0	82.0	80.0	84.0	84.0	87.0	77.0	74.0	79.0	78.0	81.0	84.0	80.0	81.0	84.0	84.0	82.0
Turkey	84.7	85.8	86.6	88.0	87.5	87.4	90.4	89.0	91.3	91.0	91.3	93.6	93.4	93.5	92.9	96.4	94.8	91.7	93.7	89.7	
Egypt	88.0	86.0	87.0	81.9	74.1	72.6	72.3	72.9	84.3	82.1	n.a.	99.7	101.4	100.7	98.1	102.0	94.4	101.4	98.9	100.1	

Source: BBVA Research, Haver, Bloomberg and HSBC

Table 4
GDP (% YoY Growth)

Country	2009					2010					2011		
	Mar	Jun	Sep	Dec	2009	Mar	Jun	Sep	Dec	2010	Mar	Jun	Sep
China	6.6	8.3	9.5	11.5	9.0	12.0	10.5	9.8	9.7	10.5	9.7	9.5	9.0
India	6.4	6.3	8.7	7.3	7.2	9.4	8.8	8.4	8.3	8.7	7.8	7.7	6.9
Indonesia	4.6	4.2	4.2	5.4	4.6	5.6	6.1	5.8	6.9	6.1	6.5	6.5	6.5
Korea	-4.2	-2.1	1.0	6.3	0.3	8.5	7.5	4.4	4.7	6.2	4.2	3.4	3.4
Taiwan	-8.1	-6.6	-1.4	8.8	-1.8	12.9	13.0	11.2	6.5	10.9	6.6	4.5	3.4
Brazil	-3.0	-2.8	-1.8	5.0	-0.6	9.3	9.2	6.7	5.0	7.6	4.2	3.1	
Mexico	-7.4	-9.6	-5.5	-2.0	-6.1	4.5	7.6	5.1	4.4	5.4	4.5	3.2	4.5
Russia	-9.2	-11.2	-8.6	-2.6	-7.9	3.5	5.0	3.1	4.5	4.0	4.1	3.4	4.8
Turkey	-14.7	-7.8	-2.8	5.9	-4.9	12.2	10.2	5.3	9.2	9.2	11.6	8.8	
Egypt	4.2	4.3	4.6	5.0	4.6	5.6	5.6	5.5	5.7	5.6	-3.8	0.3	

Source: BBVA Research and Haver

External Sector

Table 5
Exports (% YoY Growth)

Country	2010										2011										
	Mar	Apr	May	Jun	Jul	Aug	Sep	Oct	Nov	Dec	Jan	Feb	Mar	Apr	May	Jun	Jul	Aug	Sep	Oct	Nov
China	24.3	30.4	48.3	43.9	38.0	34.3	25.0	22.8	35.0	17.9	37.6	2.4	35.8	29.8	19.4	17.9	20.5	24.5	17.1	15.9	
India	56.2	42.2	34.2	46.6	13.2	22.5	24.5	21.1	26.5	36.4	32.4	49.7	44.4	34.4	56.9	46.4	80.7	46.1	36.4	10.8	
Indonesia	48.3	42.4	37.4	31.4	28.9	30.2	23.8	17.6	45.1	26.1	26.0	29.1	28.1	37.5	44.5	49.1	39.5	35.9	44.0	16.7	
Korea	33.8	29.6	39.8	30.5	26.7	26.0	16.2	27.6	21.4	22.6	44.7	16.4	28.8	23.5	22.0	11.2	21.0	25.5	18.1	8.0	13.9
Taiwan	50.1	47.7	57.5	34.1	38.5	26.6	17.5	21.9	21.8	19.0	16.6	27.2	16.6	24.6	9.4	10.8	17.7	7.2	9.9	11.7	
Brazil	33.2	23.0	47.7	18.2	25.0	39.0	35.9	30.5	39.8	44.6	34.6	37.2	22.6	33.1	31.1	38.6	25.9	36.0	23.6	20.5	23.1
Mexico	41.0	43.0	43.8	28.9	29.5	37.6	21.0	20.0	26.0	17.0	28.6	21.0	20.1	12.6	25.4	21.6	19.4	17.0	13.7	13.4	
Russia	63.8	59.2	40.9	32.2	19.1	16.5	19.5	14.0	15.1	24.6	12.1	29.0	28.8	38.0	38.8	38.4	35.7	40.1	27.4		
Turkey	21.2	24.3	33.4	14.6	5.6	8.7	5.0	8.6	5.4	17.6	22.0	21.7	19.5	26.3	11.6	19.0	24.0	32.0	20.8	8.9	
Egypt	32.8	20.9	27.7	10.5	22.3	6.3	17.8	15.5	6.8	-14.0	1.5	15.8	16.6	21.8	19.2	27.9	22.3	8.8	9.7		

Source: BBVA Research and Haver

Table 6
Imports (% YoY Growth)

Country	2010										2011										
	Mar	Apr	May	Jun	Jul	Aug	Sep	Oct	Nov	Dec	Jan	Feb	Mar	Apr	May	Jun	Jul	Aug	Sep	Oct	Nov
China	66.0	50.0	48.3	33.8	22.8	35.4	24.3	25.6	37.9	25.6	51.3	19.5	27.5	21.8	28.3	19.3	23.8	30.1	20.9	28.7	
India	77.1	48.9	32.5	12.5	34.3	32.3	37.1	25.2	11.2	-11.0	13.1	21.2	18.2	14.1	54.1	42.5	38.6	29.2	17.2	21.7	
Indonesia	67.4	67.5	30.6	48.2	45.4	25.4	13.4	28.5	47.6	27.6	32.3	23.7	32.0	32.5	48.6	28.2	28.4	23.9	57.1	29.1	
Korea	48.7	42.8	48.9	37.2	28.0	28.7	17.6	21.7	30.9	21.7	33.0	17.1	27.9	24.4	30.0	27.3	25.0	28.6	29.3	15.6	11.5
Taiwan	80.0	52.6	71.7	39.2	42.6	27.9	24.9	27.9	33.8	21.4	21.9	28.7	16.7	25.7	19.4	12.5	13.9	6.3	10.8	11.8	
Brazil	49.8	60.8	52.2	50.3	45.4	56.1	41.4	29.7	44.5	26.7	29.0	31.6	17.8	31.9	38.1	29.9	17.1	32.3	13.8	19.5	21.8
Mexico	38.6	43.9	46.7	29.5	26.5	36.5	18.5	24.8	25.6	17.0	24.9	21.9	16.3	9.8	24.0	19.6	19.2	16.9	18.5	11.8	
Russia	29.7	30.1	40.5	27.4	32.4	53.3	33.7	27.6	27.4	25.2	43.4	39.6	43.0	40.3	44.1	40.0	30.6	25.5	16.9		
Turkey	42.8	47.7	35.5	21.9	25.1	20.5	25.3	35.4	35.8	36.9	44.6	48.7	44.1	40.2	43.3	41.8	31.0	27.5	35.5	15.1	
Egypt	31.3	19.6	21.8	16.3	17.7	7.9	20.7	25.9	24.5	11.3	15.0	-8.4	3.4	11.1	38.0	20.6	-0.1	11.4	32.2		

Source: BBVA Research and Haver

Table 7
Current Account Balance (% of GDP)

Country	2009					2010					2011		
	Mar	Jun	Sep	Dec	2009	Mar	Jun	Sep	Dec	2010	Mar	Jun	Sep
China*	n.a.	n.a.	n.a.	n.a.	5.2	3.0	4.8	7.1	5.3	5.0	2.0	3.5	3.2
India	-0.2	-1.5	-3.1	-3.6	-2.1	-3.4	-3.3	-4.6	-2.3	-3.4	-1.2	-3.2	
Indonesia	2.4	1.8	1.2	2.5	2.0	1.2	0.8	0.7	0.6	0.8	1.1	0.2	0.1
Korea	2.7	5.6	3.9	3.3	3.9	0.0	4.2	4.0	3.1	2.8	1.0	1.9	
Taiwan	14.9	11.4	8.4	11.0	11.4	10.1	10.5	8.2	8.2	9.3	9.2	7.2	8.5
Brazil	-1.6	-0.6	-1.1	-2.4	-1.4	-2.6	-2.3	-2.2	-2.0	-2.3	-2.6	-1.7	
Mexico	-1.0	-0.1	-1.6	-0.3	-0.7	0.2	-0.3	-0.7	-1.3	-0.5	0.1	-1.0	-1.3
Russia	4.0	2.8	4.5	4.3	3.9	10.5	5.3	1.4	3.0	5.0	8.3	5.2	
Turkey	-1.5	-3.7	-1.1	-2.7	-2.3	-5.9	-6.1	-5.2	-8.3	-6.3	-11.8	-11.2	
Egypt	-2.0	-2.1	-0.9	-1.5	-1.6	-2.5	-3.1	-1.3	-1.0	-2.0	-1.9	-0.6	

* China: No quarterly data before 2010
Source: BBVA Research, Haver and CEIC

Table 8
Nominal Effective Exchange Rate (2005=100)

Country	2010										2011									
	Mar	Apr	May	Jun	Jul	Aug	Sep	Oct	Nov	Dec	Jan	Feb	Mar	Apr	May	Jun	Jul	Aug	Sep	Oct
China	113.3	113.5	116.2	117.4	115.7	114.1	113.8	111.8	112.6	113.8	113.6	113.2	112.4	111.7	111.9	112.1	111.9	112.5	115.6	116.9
India	90.3	92.4	92.3	91.7	89.2	89.0	89.3	89.7	89.1	89.8	88.4	87.6	87.6	87.5	86.3	86.3	87.0	85.0	82.8	80.8
Indonesia	95.2	96.7	96.8	97.7	96.9	96.5	95.3	93.3	93.6	93.4	92.4	93.2	94.0	94.2	94.9	94.6	94.3	93.8	93.3	92.8
Korea	81.2	83.0	80.8	77.8	76.9	77.8	78.4	79.0	78.8	78.3	79.5	79.2	78.4	80.4	79.9	79.9	81.4	79.6	77.5	75.9
Taiwan	91.3	92.6	92.9	92.3	90.9	90.5	90.2	90.5	92.3	94.4	96.2	95.1	93.7	94.6	94.9	94.4	93.8	92.7	91.8	90.7
Brazil	134.1	136.5	135.4	137.4	137.8	137.6	139.8	139.3	137.6	140.3	141.1	140.9	140.5	145.4	142.7	145.1	147.2	144.1	134.4	133.7
Mexico	82.9	85.1	82.8	83.2	81.8	81.7	81.1	82.4	83.3	83.2	84.6	84.8	84.9	86.4	86.8	85.6	86.4	82.3	77.9	76.0
Russia	88.6	90.2	90.3	89.6	88.4	88.1	85.9	83.6	82.7	85.0	86.0	87.4	88.6	87.8	88.5	88.1	88.5	85.5	82.7	81.9
Turkey	82.7	85.3	85.9	85.9	85.3	86.1	86.3	86.2	86.6	83.1	80.1	77.8	77.0	78.2	75.4	73.9	71.9	68.0	68.5	67.9
Egypt	n.a.	n.a.	n.a.	n.a.	n.a.	n.a.	n.a.	n.a.	n.a.	n.a.	n.a.	n.a.	n.a.	n.a.	n.a.	n.a.	n.a.	n.a.	n.a.	n.a.

Source: BBVA Research and BIS

Table 9
Real Effective Exchange Rate (2005=100)

Country	2010										2011									
	Mar	Apr	May	Jun	Jul	Aug	Sep	Oct	Nov	Dec	Jan	Feb	Mar	Apr	May	Jun	Jul	Aug	Sep	Oct
China	115.6	116.0	119.9	119.0	117.9	118.7	119.7	118.1	118.6	120.0	118.1	120.8	117.6	116.9	118.3	117.4	117.8	120.6	125.1	126.4
India	104.1	108.0	107.9	108.1	106.1	105.3	105.8	106.7	106.5	108.5	108.4	106.7	107.1	108.4	106.6	107.3	108.9	106.3	103.7	101.6
Indonesia	120.9	122.5	122.6	125.4	126.1	126.0	124.5	121.5	122.5	123.2	122.7	123.1	123.3	122.7	123.2	123.6	123.8	123.6	123.0	121.8
Korea	83.9	86.0	83.4	80.5	79.9	80.5	81.6	82.2	81.4	81.2	83.4	82.8	82.2	84.0	83.0	83.4	85.4	83.9	81.2	79.3
Taiwan	86.3	88.0	87.9	88.0	86.9	86.0	85.4	85.8	87.8	88.8	90.6	89.4	87.1	88.3	88.4	88.6	87.6	86.1	85.0	84.2
Brazil	142.3	145.0	144.0	146.2	146.6	145.7	148.1	148.1	147.3	150.5	152.5	152.4	152.1	157.9	154.9	157.8	160.1	156.5	146.0	145.6
Mexico	92.0	93.9	90.6	91.2	89.9	89.7	89.2	90.9	92.6	92.8	94.7	94.5	94.2	95.3	94.6	93.4	94.6	89.9	85.0	83.5
Russia	130.9	123.4	131.3	131.2	127.5	126.4	125.8	120.2	122.1	126.1	129.3	130.6	138.8	127.5	136.4	136.4	134.5	128.2	125.3	121.9
Turkey	109.8	113.8	113.8	113.3	112.1	113.1	114.3	115.8	116.2	110.6	107.3	104.4	102.7	105.0	103.2	99.7	97.0	92.0	92.9	94.8
Egypt	n.a.	n.a.	n.a.	n.a.	n.a.	n.a.	n.a.	n.a.	n.a.	n.a.	n.a.	n.a.	n.a.	n.a.	n.a.	n.a.	n.a.	n.a.	n.a.	n.a.

Source: BBVA Research and BIS

Unemployment

Table 10
Unemployment Rate (%)

Country	2009					2010					2011		
	Mar	Jun	Sep	Dec	2009	Mar	Jun	Sep	Dec	2010	Mar	Jun	Sep
China	4.3	4.3	4.3	4.3	4.3	4.2	4.2	4.1	4.1	4.2	4.1	4.1	
India*	n.a.	n.a.	n.a.	n.a.	10.7	n.a.	n.a.	n.a.	n.a.	10.8	n.a.	n.a.	n.a.
Indonesia*	8.1	n.a.	7.9	n.a.	7.9	7.4	n.a.	7.1	n.a.	7.1	6.8	n.a.	
Korea	3.8	3.8	3.6	3.3	3.6	4.7	3.5	3.5	3.3	3.7	4.2	3.4	3.1
Taiwan	5.6	5.9	6.0	5.9	5.8	5.6	5.3	5.1	4.8	5.2	4.6	4.4	4.3
Brazil	8.6	8.6	7.9	7.2	8.1	7.4	7.3	6.6	5.7	6.7	6.3	6.3	6.0
Mexico	5.0	5.3	6.3	5.3	5.5	5.4	5.2	5.6	5.3	5.4	5.1	5.2	5.7
Russia	9.1	8.5	7.8	8.0	8.4	8.8	7.4	6.8	6.9	7.5	7.5	6.6	6.2
Turkey	15.8	13.8	13.2	13.2	14.0	14.2	11.2	11.1	11.2	11.9	11.4	9.5	
Egypt	9.4	9.4	9.4	9.4	9.4	9.1	9.0	8.9	8.9	9.0	11.9	11.8	11.9

* Lack of quarterly data for India and Indonesia

Source: BBVA Research, Haver and Bloomberg

Inflation

Table 11
Consumer Price Index (% YoY Growth)

	2010										2011										
Country	Mar	Apr	May	Jun	Jul	Aug	Sep	Oct	Nov	Dec	Jan	Feb	Mar	Apr	May	Jun	Jul	Aug	Sep	Oct	Nov
China	2.20	2.61	2.82	2.72	3.12	3.23	3.43	4.27	5.09	4.57	4.99	4.99	5.52	5.42	5.62	6.58	6.69	6.37	6.27	5.62	
India	10.36	10.88	10.48	10.25	9.98	8.87	8.98	9.08	8.20	9.45	9.47	9.54	9.68	9.74	9.56	9.51	9.36	9.78	9.72	9.73	
Indonesia	3.43	3.91	4.16	5.05	6.22	6.44	5.80	5.67	6.33	6.96	7.02	6.84	6.65	6.16	5.98	5.54	4.61	4.79	4.61	4.42	4.15
Korea	2.48	2.57	2.68	2.68	2.57	2.66	3.37	3.69	2.97	3.06	3.44	3.94	4.13	3.82	3.91	4.22	4.51	4.69	3.76	3.56	4.17
Taiwan	1.26	1.34	0.76	1.19	1.31	-0.47	0.29	0.56	1.52	1.24	1.10	1.33	1.40	1.31	1.66	1.95	1.33	1.34	1.37	1.22	
Brazil	5.17	5.26	5.22	4.84	4.60	4.49	4.70	5.20	5.63	5.91	5.99	6.01	6.30	6.51	6.55	6.71	6.87	7.23	7.31	6.97	
Mexico	4.97	4.27	3.92	3.69	3.64	3.68	3.70	4.02	4.32	4.40	3.78	3.57	3.04	3.36	3.25	3.28	3.55	3.42	3.14	3.20	
Russia	6.46	6.04	5.97	5.74	5.46	6.04	6.96	7.50	8.06	8.78	9.56	9.47	9.46	9.61	9.59	9.42	9.01	8.16	7.21	7.19	
Turkey	9.56	10.19	9.10	8.37	7.58	8.33	9.24	8.62	7.29	6.40	4.90	4.16	3.99	4.26	7.17	6.24	6.31	6.65	6.15	7.66	
Egypt	12.00	10.81	9.92	10.11	10.41	10.88	10.91	10.97	10.18	10.58	10.80	10.68	11.51	12.12	11.87	11.82	10.38	8.52	8.20	7.10	

Source: BBVA Research and Haver

Table 12
Producer Price Index (% YoY Growth)

Producer Price Index (% Y-o-Y Growth)																					
Country	2010										2011										
	Mar	Apr	May	Jun	Jul	Aug	Sep	Oct	Nov	Dec	Jan	Feb	Mar	Apr	May	Jun	Jul	Aug	Sep	Oct	Nov
China	5.91	6.81	7.13	6.41	4.84	4.32	4.33	5.04	6.06	5.93	6.64	7.23	7.31	6.82	6.79	7.12	7.54	7.25	6.52	5.00	
India	10.36	10.88	10.48	10.25	9.98	8.87	8.98	9.08	8.20	9.45	9.47	9.54	9.68	9.74	9.56	9.51	9.36	9.78	9.72	9.73	
Indonesia	4.35	4.97	5.59	4.29	4.29	3.64	4.88	5.49	5.45	6.02	6.59	7.78	7.74	7.69	7.06	7.06	8.24	7.60	8.14	6.94	6.32
Korea	2.62	3.24	4.63	4.55	3.42	3.13	4.03	4.96	4.85	5.27	6.21	6.64	7.30	6.81	6.16	6.18	6.53	6.60	5.67	5.58	
Taiwan	6.87	9.06	9.43	7.02	5.32	3.33	3.77	3.67	2.42	2.34	1.97	3.87	5.82	4.66	3.42	3.89	4.04	4.08	5.13	5.93	
Brazil	0.80	1.59	3.78	4.90	6.49	8.23	9.49	11.02	13.26	13.83	13.83	13.66	13.75	13.25	10.27	9.59	9.08	8.04	7.55		
Mexico	3.85	4.29	3.94	3.20	3.67	3.50	2.85	3.26	3.41	4.74	4.64	4.75	5.41	6.05	5.46	6.03	6.45	6.70	7.58	8.28	
Russia	12.03	12.80	15.14	9.23	7.97	9.91	7.27	10.62	16.10	16.67	20.46	22.07	21.50	20.09	18.27	19.16	17.19	18.68	19.33	18.75	
Turkey	8.58	10.42	9.21	7.64	8.24	9.03	8.91	9.92	8.17	8.87	10.80	10.87	10.08	8.21	9.63	10.19	10.34	11.00	12.15	12.58	
Egypt	13.64	15.79	9.92	8.57	10.36	10.27	14.11	16.95	13.50	12.77	14.62	16.84	20.44	20.61	20.05	19.39	17.25	14.01	11.73	6.14	

Source: BBVA Research, Haver and CEIC

Money and Finance

Table 13

Policy Rates (% Per Annum)

		2010										2011										
Country	Description	Mar	Apr	May	Jun	Jul	Aug	Sep	Oct	Nov	Dec	Jan	Feb	Mar	Apr	May	Jun	Jul	Aug	Sep	Oct	Nov
China	Prime Lending Rate	5.31	5.31	5.31	5.31	5.31	5.31	5.31	5.56	5.56	5.81	5.81	6.06	6.06	6.31	6.31	6.31	6.56	6.56	6.56	6.56	6.56
India	Reserve Bank of India REPO Cutoff Yield	5.00	5.25	5.25	5.25	5.75	5.75	6.00	6.00	6.25	6.25	6.50	6.50	6.75	6.75	7.25	7.50	8.00	8.00	8.25	8.50	8.50
Indonesia	Bank Indonesia Reference Interest Rate	6.50	6.50	6.50	6.50	6.50	6.50	6.50	6.50	6.50	6.50	6.50	6.75	6.75	6.75	6.75	6.75	6.75	6.75	6.75	6.50	6.00
Korea	South Korea Official Bank Rate	2.00	2.00	2.00	2.00	2.25	2.25	2.25	2.25	2.50	2.50	2.75	2.75	3.00	3.00	3.00	3.25	3.25	3.25	3.25	3.25	3.25
Taiwan	CB of China Taiwan Discount Rate Daily	1.25	1.25	1.25	1.38	1.38	1.38	1.38	1.50	1.50	1.63	1.63	1.63	1.63	1.75	1.75	1.88	1.88	1.88	1.88	1.88	1.88
Brazil	Brazil SELIC-TAR	8.75	9.50	9.50	10.25	10.75	10.75	10.75	10.75	10.75	10.75	11.25	11.25	11.75	12.00	12.00	12.25	12.50	12.00	12.00	11.50	11.00
Mexico	Bank of Mexico Official Overnight Rate	4.50	4.50	4.50	4.50	4.50	4.50	4.50	4.50	4.50	4.50	4.50	4.50	4.50	4.50	4.50	4.50	4.50	4.50	4.50	4.50	4.50
Russia	Russia Refinancing Rate	8.25	8.00	8.00	7.75	7.75	7.75	7.75	7.75	7.75	7.75	7.75	8.00	8.00	8.00	8.25	8.25	8.25	8.25	8.25	8.25	8.25
Turkey	1-week repo rate	n.a.	n.a.	7.00	7.00	7.00	7.00	7.00	7.00	7.00	6.50	6.25	6.25	6.25	6.25	6.25	6.25	6.25	5.75	5.75	5.75	5.75
Egypt	Egypt Benchmark Deposit Rate	8.25	8.25	8.25	8.25	8.25	8.25	8.25	8.25	8.25	8.25	8.25	8.25	8.25	8.25	8.25	8.25	8.25	8.25	8.25	8.25	9.25

Source: BBVA Research, Bloomberg and Haver

Table 14
Deposit Rates (% Per Annum)

Country	Deposit Rates	2010										2011									
		Mar	Apr	May	Jun	Jul	Aug	Sep	Oct	Nov	Dec	Jan	Feb	Mar	Apr	May	Jun	Jul	Aug	Sep	Oct
China	3-Month CD Rate	2.25	2.25	2.25	2.25	2.25	2.25	2.25	2.50	2.50	2.75	2.75	3.00	3.00	3.25	3.25	3.25	3.50	3.50	3.50	
India	India Bank Deposit 90-180 day	6.75	6.75	6.75	6.75	6.75	6.75	6.75	7.00	7.00	7.00	7.00	7.00	7.00	7.00	7.00	7.00	7.00	7.00		
Indonesia	3-Month time deposit	6.99	6.98	6.95	6.95	6.95	6.96	6.95	6.99	7.03	7.06	6.88	6.82	6.91	6.96	6.91	6.95	6.88	6.90	7.05	
Korea	91-Day CD Rate	3.90	3.40	3.50	3.70	3.90	3.90	3.80	3.60	3.70	3.90	4.00	4.30	4.20	4.20	4.20	4.20	4.20	4.20		
Taiwan	3-Month NTD Deposit	0.53	0.53	0.53	0.66	0.66	0.66	0.66	0.74	0.74	0.74	0.79	0.79	0.79	0.87	0.87	0.87	0.94	0.94	0.94	0.94
Brazil	30-Day CD Rate	8.20	8.45	8.57	9.19	9.57	9.17	9.15	8.63	9.32	9.89	9.80	9.05	11.51	11.10	11.82	11.78	12.28	11.95	11.04	
Mexico	1-Month Financial Promissory Notes (%)	1.30	1.29	1.30	1.30	1.30	1.28	1.14	1.13	0.95	0.96	0.95	0.95	0.95	0.95	0.95	0.96	0.95	0.94	0.96	
Russia	1-Month Time Deposit	6.90	6.70	6.20	5.80	5.60	5.40	5.10	5.00	5.00	4.90	4.50	4.40	4.20	4.10	4.10	4.20	4.00	4.10	4.00	
Turkey	3-Month Time Deposit TL	15.93	15.82	15.91	15.95	15.72	15.78	15.78	13.82	13.83	12.90	12.08	12.15	12.16	12.90	14.75	14.89	15.01	14.99	14.92	
Egypt	Deposits of less than 1 year	6.00	6.00	5.90	6.30	6.30	6.30	6.40	6.60	6.60	6.60	6.50	6.50	6.50	6.60	6.70	6.60	6.70	6.70		

Source: BBVA Research, Haver and Datastream

Table 15
M2 (% YoY Growth)

Country	2010										2011									
	Mar	Apr	May	Jun	Jul	Aug	Sep	Oct	Nov	Dec	Jan	Feb	Mar	Apr	May	Jun	Jul	Aug	Sep	Oct
China	22.5	21.5	21.0	18.5	17.6	19.2	19.0	23.3	19.5	19.7	17.3	15.7	16.6	15.4	15.1	15.9	14.7	13.6	13.1	12.9
India	19.2	15.7	15.6	19.1	19.4	17.2	15.7	19.8	21.1	19.9	14.0	13.8	9.4	10.9	9.1	7.0	4.5	5.3		
Indonesia	10.2	10.6	11.2	12.8	13.1	12.1	12.7	14.2	13.8	15.4	17.5	17.1	16.1	15.0	15.5	13.1	15.6	17.2	16.2	16.0
Korea	9.7	9.3	9.0	9.0	9.1	7.9	7.2	7.7	7.3	6.0	5.0	4.8	4.1	4.3	3.2	2.9	4.2	4.0	4.5	
Taiwan	4.0	4.0	3.4	4.0	4.2	4.7	4.7	4.9	5.1	5.3	6.4	5.8	5.9	6.2	5.7	5.9	6.3	5.8	5.7	5.3
Brazil	9.9	9.1	9.1	8.8	9.4	11.0	12.0	13.5	14.9	16.7	17.6	18.9	19.9	21.0	21.7	22.1	22.7	22.4	21.9	20.8
Mexico*	9.1	n.a.	n.a.	8.0	n.a.	n.a.	9.5	n.a.	n.a.	8.0	n.a.	n.a.	7.9	n.a.	n.a.	7.9	n.a.	n.a.	9.1	n.a.
Russia	35.0	36.0	33.6	33.6	35.2	36.3	35.0	33.4	33.2	31.1	29.5	28.2	26.7	24.5	22.6	22.7	22.2	20.9	21.5	19.8
Turkey	16.8	19.1	22.4	24.7	25.1	24.4	23.9	22.7	24.2	24.4	25.3	24.9	24.0	24.4	23.6	21.5	20.8	21.9	19.4	19.5
Egypt	9.8	9.6	8.4	10.4	10.4	11.8	11.8	13.4	12.8	12.4	11.8	12.2	11.2	10.8	11.0	10.0	10.4	9.5	8.0	7.3

* Mexico: Quarterly data
Source: BBVA Research and Haver

Table 16
Loans (% YoY Growth)

Country	Description	2010										2011									
		Mar	Apr	May	Jun	Jul	Aug	Sep	Oct	Nov	Dec	Jan	Feb	Mar	Apr	May	Jun	Jul	Aug	Sep	Oct
China	Domestic Credit (NSA)	21.9	21.4	20.4	18.2	17.5	18.4	18.1	18.6	18.1	18.8	18.0	16.9	17.3	15.9	16.1	16.6	15.6	15.5	15.7	15.3
India	Domestic Credit (EOP, NSA)	17.2	15.8	16.0	14.2	13.3	14.0	15.0	15.8	15.5	18.6	17.0	17.8	17.5	18.0	17.9	19.2	18.7	18.3		
Indonesia	O/S Loans inc Fgn Cur for Com & Rural Banks: Total (EOP, NSA)	12.4	15.8	18.8	20.6	20.5	21.2	22.5	22.5	22.8	23.3	24.1	24.3	24.7	23.9	23.5	23.0	23.5	23.9	25.2	
Korea	Loans of Commercial and Specialized Banks (CSB): Total	3.0	2.9	3.2	3.0	3.0	2.3	2.6	3.5	3.4	3.5	4.0	4.5	4.7	5.4	5.5	5.5	5.9	6.5	7.0	
Taiwan	Loans/Discounts: All Banks: Total	3.3	4.0	5.4	5.5	6.1	6.4	6.3	7.2	6.8	6.8	8.4	8.5	9.0	8.6	8.1	7.7	7.5	7.7	7.9	7.4
Brazil	Domestic Credit (EOP, NSA)	19.6	19.6	19.8	20.7	22.0	21.6	20.3	20.0	20.8	20.3	20.1	21.4	18.3	19.0	18.4	18.4	17.3	17.4	18.0	17.7
Mexico	Total Loans in Billions	-0.4	n.a.	n.a.	4.8	n.a.	n.a.	6.3	n.a.	n.a.	6.9	n.a.	n.a.	11.8	n.a.	n.a.	8.0	n.a.	n.a.	14.2	n.a.
Russia	Loans in Rubles (NSA)	-0.7	1.1	1.9	4.3	6.8	7.1	9.9	11.4	13.8	17.1	16.7	20.0	21.0	23.5	24.1	24.5	26.6	28.6		
Turkey	Mon Survey: Domestic Credit (NSA)	25.3	25.5	26.8	27.6	27.0	25.7	25.2	24.9	25.0	26.6	26.2	24.5	22.5	22.6	24.1	21.9	21.7	22.8	21.9	21.9
Egypt	Domestic Credit (EOP, NSA)	8.8	7.3	9.2	11.5	11.7	9.7	8.6	10.3	11.4	7.8	9.6	14.5	15.9	17.7	16.4	15.2	14.6	17.4	19.0	18.9

Source: BBVA Research, Haver and CEIC

Table 17
Swap Spread

Country	Description	3y-1y			10y-5y		
		02-Dec-11	1 month ago	3 months ago	02-Dec-11	1 month ago	3 months ago
China	Onshore quarterly vs. 7-day repo	0.25	4	-38	15.5	10	14
India	MIBOR Onshore Swap Rates	-65.25	-67	-66	3	1	-1
Indonesia	Onshore Quarterly vs. 3mo SBI	40	70	70	n.a.	n.a.	n.a.
Korea	Onshore KRW/KRW Swap Rates	-6	-3.62	-8	17.5	11.5	15
Taiwan	Onshore TWD/TWD swap rate	6.1	8.5	10	24	24	27
Brazil	Swap rates pre * DI	63.61	62.32	36.83	n.a.	n.a.	n.a.
Mexico*	MXN SWAP (TIIE)	32.9	27	18	97.8	99	95
Russia	RUB SWAP VS MOSPRIME	29	18	86	29	37	61
Turkey	TRY SWAP (vs 3M)	n.a.	n.a.	n.a.	-6	13	55.5
Egypt		n.a.	n.a.	n.a.	n.a.	n.a.	n.a.

* Mexico (38m-13m; 130m-65m)

Source: BBVA Research and Bloomberg

Table 18
Stock Index Returns (%)

Country	Description	Index	1 Month	YTD	1 Year
China	Shanghai SE Composite Index	2,361	-4.43%	-13.42%	-13.89%
India	BSE Sensex 30 Index	16,879	-3.44%	-18.56%	-15.78%
Indonesia	Jakarta Composite index	3,780	2.57%	4.16%	6.71%
Korea	KOSPI Index	1,916	0.34%	-6.57%	0.43%
Taiwan	Taiwan Taiex Index	7,141	-6.32%	-16.73%	-12.30%
Brazil	Bovespa Index	58,143	1.43%	-16.10%	-16.15%
Mexico	Mexico IPC Index	36,568	2.31%	-3.74%	-0.39%
Russia	RTSSTD Index	1,515	4.00%	-7.92%	-3.95%
Turkey	ISE National 100 Index	54,334	-0.94%	-16.55%	-16.61%
Egypt	Hermes Index	420	-5.79%	-36.65%	-33.56%

Source: BBVA Research and Bloomberg

Table 19
FX Returns (%)

Country	Description	Rate	1 Month	YTD	1 Year
China	Renminbi	6.36	-0.08%	3.88%	4.77%
India	Indian Rupees	51.2	-3.79%	-12.69%	-11.37%
Indonesia	Rupiah	9,025	-0.89%	-0.32%	-0.07%
Korea	Won	1,131	-1.54%	-0.47%	1.76%
Taiwan	New Taiwan Dollar	30.15	-0.24%	-2.83%	0.93%
Brazil	Brazilian Real	1.80	-3.07%	-7.71%	-5.29%
Mexico	Peso	13.55	0.43%	-8.96%	-8.51%
Russia	Rouble	30.77	0.11%	-0.74%	2.01%
Turkey	Turkish Lira	1.83	-1.82%	-15.45%	-18.47%
Egypt	Egyptian Pound	6.00	-0.61%	-3.33%	-3.64%

Source: BBVA Research and Bloomberg

Table 20
Government: Credit Ratings

	Moody	S&P	Fitch
China	Aa3	AA-	A+
India	Baa3	BBB-	BBB-
Indonesia	Ba1	BB+	BB+
Korea	A1	A	A+
Taiwan	Aa3	AA-	A+
Brazil	Baa2	BBB	BBB
Mexico	Baa1	BBB	BBB
Russia	Baa1	BBB	BBB
Turkey	Ba3	BB	BB+
Egypt	Ba1	B+	BB

Positive, Stable, Negative
Source: BBVA Research and BloombergTable 21
Fiscal Balance (% of GDP)

Country	Description	2009					2010					2011		
		Mar	Jun	Sep	Dec	2009	Mar	Jun	Sep	Dec	2010	Mar	Jun	Sep
China	Govt Finance: Budget	2.62	4.14	1.50	-12.51	-2.26	6.42	4.59	-1.03	-11.65	-1.62	n.a.	4.02	-0.22
India	Central Govt: Gross Fiscal	-8.53	-9.08	-5.17	-6.90	-6.99	-6.32	-2.42	-5.50	-1.96	-3.72	-9.83	-8.40	
Indonesia	Govt Finance: Budget	0.22	-0.62	-1.90	-3.73	-1.58	1.21	1.88	-0.44	-4.83	-0.54	0.33	2.70	-0.42
Korea	Govt Finance: Budget	-4.71	-5.50	1.24	1.67	-1.65	-2.62	-1.49	6.18	n.a.	1.42	-1.54	0.68	
Taiwan	Central Government	8.25	3.78	-1.15	-3.19	2.09	12.22	0.14	1.44	-2.15	2.54	10.72	2.13	-2.98
Brazil	Natl Treasury Performance Summary	-5.08	-1.15	-4.74	2.73	-1.88	-5.24	-1.40	-1.67	1.84	-1.46	-4.45	-0.56	
Mexico	Public Sector Budgetary	-1.67	-1.96	-0.94	-4.42	-2.29	0.08	-3.49	-2.19	-5.54	-2.86	-0.18	-3.59	-1.60
Russia	Federal Budget	-0.36	-7.50	-5.80	-8.99	-5.93	-2.56	-1.35	-2.58	-8.63	-4.03	1.56	4.12	
Turkey	Central Government	-9.20	-1.78	-6.73	-4.48	-5.53	-4.69	-1.53	-1.97	-6.15	-3.69	-1.43	2.19	
Egypt*	Budget Sector Cash Deficit	n.a.	n.a.	n.a.	n.a.	-6.90	n.a.	n.a.	n.a.	n.a.	-8.10	n.a.	n.a.	n.a.

* Egypt: Lack of quarterly data
Source: BBVA Research and Haver

DISCLAIMER

This document and the information, opinions, estimates and recommendations expressed herein, have been prepared by Banco Bilbao Vizcaya Argentaria, S.A. (hereinafter called "BBVA") to provide its customers with general information regarding the date of issue of the report and are subject to changes without prior notice. BBVA is not liable for giving notice of such changes or for updating the contents hereof.

This document and its contents do not constitute an offer, invitation or solicitation to purchase or subscribe to any securities or other instruments, or to undertake or divest investments. Neither shall this document nor its contents form the basis of any contract, commitment or decision of any kind.

Investors who have access to this document should be aware that the securities, instruments or investments to which it refers may not be appropriate for them due to their specific investment goals, financial positions or risk profiles, as these have not been taken into account to prepare this report. Therefore, investors should make their own investment decisions considering the said circumstances and obtaining such specialized advice as may be necessary. The contents of this document is based upon information available to the public that has been obtained from sources considered to be reliable. However, such information has not been independently verified by BBVA and therefore no warranty, either express or implicit, is given regarding its accuracy, integrity or correctness. BBVA accepts no liability of any type for any direct or indirect losses arising from the use of the document or its contents. Investors should note that the past performance of securities or instruments or the historical results of investments do not guarantee future performance.

The market prices of securities or instruments or the results of investments could fluctuate against the interests of investors. Investors should be aware that they could even face a loss of their investment. Transactions in futures, options and securities or high-yield securities can involve high risks and are not appropriate for every investor. Indeed, in the case of some investments, the potential losses may exceed the amount of initial investment and, in such circumstances, investors may be required to pay more money to support those losses. Thus, before undertaking any transaction with these instruments, investors should be aware of their operation, as well as the rights, liabilities and risks implied by the same and the underlying stocks. Investors should also be aware that secondary markets for the said instruments may be limited or even not exist.

BBVA or any of its affiliates, as well as their respective executives and employees, may have a position in any of the securities or instruments referred to, directly or indirectly, in this document, or in any other related thereto; they may trade for their own account or for third-party account in those securities, provide consulting or other services to the issuer of the aforementioned securities or instruments or to companies related thereto or to their shareholders, executives or employees, or may have interests or perform transactions in those securities or instruments or related investments before or after the publication of this report, to the extent permitted by the applicable law.

BBVA or any of its affiliates' salespeople, traders, and other professionals may provide oral or written market commentary or trading strategies to its clients that reflect opinions that are contrary to the opinions expressed herein. Furthermore, BBVA or any of its affiliates' proprietary trading and investing businesses may make investment decisions that are inconsistent with the recommendations expressed herein. No part of this document may be (i) copied, photocopied or duplicated by any other form or means (ii) redistributed or (iii) quoted, without the prior written consent of BBVA. No part of this report may be copied, conveyed, distributed or furnished to any person or entity in any country (or persons or entities in the same) in which its distribution is prohibited by law. Failure to comply with these restrictions may breach the laws of the relevant jurisdiction.

In the United Kingdom, this document is directed only at persons who (i) have professional experience in matters relating to investments falling within article 19(5) of the financial services and markets act 2000 (financial promotion) order 2005 (as amended, the "financial promotion order"), (ii) are persons falling within article 49(2) (a) to (d) ("high net worth companies, unincorporated associations, etc.") Of the financial promotion order, or (iii) are persons to whom an invitation or inducement to engage in investment activity (within the meaning of section 21 of the financial services and markets act 2000) may otherwise lawfully be communicated (all such persons together being referred to as "relevant persons"). This document is directed only at relevant persons and must not be acted on or relied on by persons who are not relevant persons. Any investment or investment activity to which this document relates is available only to relevant persons and will be engaged in only with relevant persons. The remuneration system concerning the analyst/s author/s of this report is based on multiple criteria, including the revenues obtained by BBVA and, indirectly, the results of BBVA Group in the fiscal year, which, in turn, include the results generated by the investment banking business; nevertheless, they do not receive any remuneration based on revenues from any specific transaction in investment banking.

BBVA is not a member of the FINRA and is not subject to the rules of disclosure affecting such members.

"BBVA is subject to the BBVA Group Code of Conduct for Security Market Operations which, among other regulations, includes rules to prevent and avoid conflicts of interests with the ratings given, including information barriers. The BBVA Group Code of Conduct for Security Market Operations is available for reference at the following web site: www.bbva.com / Corporate Governance".

BBVA is a bank supervised by the Bank of Spain and by Spain's Stock Exchange Commission (CNMV), registered with the Bank of Spain with number 0182.

This report has been produced by Emerging Markets Unit, Cross-Country Analysis Team

Chief Economist for Emerging Market

Alicia García-Herrero

+852 2582 3281

aliciagarcia-herrero@bbva.com.hk

Chief Economist,

Cross-Country Analysis Emerging Markets

Álvaro Ortiz Vidal-Abarca

+34 630 144 485

alvaro.ortiz@bbva.com

Mario Nigrinis

+ 852 2582 3193

Mario.nigrinis@bbva.com

David Martínez

+34 690 845 429

dmartinez@bbva.com

Alfonso Ugarte

+ 34 91 537 37 35

alfonso.ugarte@bbva.com

With the assistance of:

Carrie Liu

carrie.liu@bbva.com

Vicente Mestre

vicente.mestre@bbva.com

Paul Pozarowski

paul.pozarowski@bbva.com

Juan Ruiz

juan.ruiz.sanchez@bbva.com

Edward Wu

edward.wu@bbva.com

BBVA Research

Group Chief Economist
Jorge Sicilia

Emerging Economies:

Alicia García-Herrero
aliciagarcia-herrero@bbva.com.hk

Cross-Country Emerging Markets Analysis

Álvaro Ortiz Vidal-Abarca
alvaro.ortiz@bbva.com

Asia

Stephen Schwartz
stephen.schwartz@bbva.com.hk

China

India

Sumedh Deorukhkar
deorukhkar@grupobbva.com

Latam Coordination

Joaquín Vial
jvial@bbva.com

Argentina

Gloria Sorensen
gsorensen@bbva.com

Chile

Alejandro Puente
apuente@bbva.com

Colombia

Juana Téllez
juana.tellez@bbva.com

Peru

Hugo Perea
hperea@grupobbva.com.pe

Venezuela

Oswaldo López
oswaldo_lopez@provincial.com

Mexico

Adolfo Albo
a.albo@bbva.bancomer.com

Macroeconomic Analysis Mexico

Julián Cubero
juan.cubero@bbva.bancomer.com

Developed Economies:

Rafael Doménech
r.domenech@bbva.com

Spain

Miguel Cardoso
miguel.cardoso@bbva.com

Europe

Miguel Jiménez
mjimenezg@bbva.com

US

Nathaniel Karp
nathaniel.karp@bbvacompass.com

Financial Systems & Regulation:

Santiago Fernández de Lis
sfernandezdelis@grupobbva.com

Financial Systems

Ana Rubio
arubiog@bbva.com

Pensions

David Tuesta
david.tuesta@bbva.com

Regulation and Public Policies

María Abascal
maria.abascal@bbva.com

Global Areas:

Economic Scenarios

Juan Ruiz
juan.ruiz@bbva.com

Financial Scenarios

Sonsoles Castillo
s.castillo@bbva.com

Innovation & Processes

Clara Barrabés
clara.barrabes@bbva.com

Market & Client Strategy:

Antonio Pulido
ant.pulido@grupobbva.com

Global Equity

Ana Munera
ana.munera@grupobbva.com

Global Credit

Javier Serna
Javier.Serna@bbvauk.com

Interest Rates, Currencies and Commodities

Luis Enrique Rodríguez
luisen.rodriguez@grupobbva.com

Contact details:**BBVA Research**

Paseo Castellana, 81 – 7th floor
28046 Madrid (Spain)
Tel. + 34 91 374 60 00 and + 34 91 537 70 00
Fax. +34 91 374 30 25
bbvaresearch@bbva.com
www.bbvaresearch.com