

Global

Weekly Watch

Madrid, 2 July 2010

Economics Analysis

Financial Scenarios

Daniel Naviadaniel.navia@grupobbva.com
+34 91 537 83 51**Marcos Dal Bianco**marcosjose.dal@grupobbva.com
+34 91 538 63 49**María Martínez Álvarez**maria.martinez.alvarez@grupobbva.com
+34 91 537 66 83**Ignacio González-Panizo**ignacio.gonzalez-panizo@grupobbva.com
+34 91 538 63 50

Renewed doubts about the resilience of the recovery

New macro data releases from the US, particularly on the labor market and consumer confidence, and the Chinese PMI for June helped to raise market concerns about a scenario of weaker growth or even a double-dip. The data flow is still consistent with our forecasts for the US and China, which do not anticipate a marked slowdown. However, uncertainty is increasing and since our figures are below market consensus in all major economies it is quite likely that negative surprises continue as markets adjust their overstretched growth expectations.

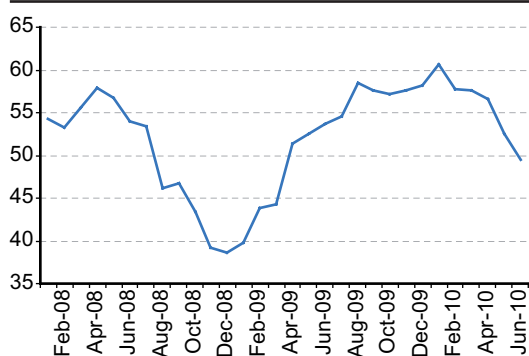
All eyes on Europe,...

In Europe, Germany's industrial production and exports for May and the Eurozone's retail sales for the same month might confirm next week if this trend also applies for the old continent. The ECB meeting will also be at centre stage next week. We do not expect any major change, but there will be a strong demand for explanations regarding liquidity policies.

...although China's exports might also add further uncertainty

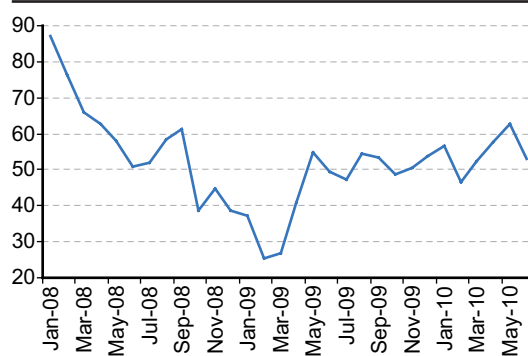
Following the negative surprise in June's PMI, a lower-than-expected export data could intensify the renewed market concerns of a hard landing in China. Nonetheless, we see downward risks to the Chinese economy as more limited than markets are currently pricing.

Chart 1

China: Manufacturing PMI (index)


Source: Datastream and BBVA Research

Chart 2

USA: Consumer confidence index


Source: Datastream and BBVA Research

Highlights

Markets



Highlights



Calendar



Markets Data



ECB's liquidity policies and the implication for Eonia

After the limited amount demanded by banks in June's three month auction, it is expected that liquidity in the Euro area will be much lower. This could move Eonia fairly quickly towards 1%, and the ECB will need to communicate that this is only a normalization of rates, not a change in stance.

Decoupling in M&A activity gives support to emerging currencies

In the last two months, annual accumulated M&A inflows to emerging countries have almost reached the pre-crisis peak, adding an element of support to the appreciation of their currencies.

Strong credit growth in LatAm points to further monetary tightening

Recent data showed that bank credit is growing strongly in the region. Brazil's adjustment in the reserve requirement ratio was expected, but risks are biased to earlier tightening if credit surprises continue.

Markets Analysis

Nicolás Trillo
nicolas.trillo@grupobbva.com
+34 91 537 84 95

Exchange Rates Europe
Chief Strategist
Pablo Zaragoza
pzaragoza@grupobbva.com
+34 91 374 38 64

Strategy
Chief Strategist
Joaquín García Huerga, CFA
jghuerga@grupobbva.com
+34 91 374 68 30

Credit Europe
Chief Analyst
Javier Serna
javier.sernaa@grupobbva.com
+34 91 537 61 08

Global Interest Rates
Aurora Galán
aurora.galan@grupobbva.com
+34 91 537 78 41

Strategy
Critina Varela
cvarela@grupobbva.com
+34 91 537 78 25

Markets

Liquidity auctions stabilise financial risk in Europe

The ECB's liquidity auctions and the weak cyclical indicators are the two factors which have determined financial market trends this week. Although unaggressive demand in liquidity auctions has involved a rise in EONIA rates in line with forecasts, it is important because it has stabilised, or at least eased financial risk in Europe. As a result, the disappointing economic releases in the US are not affecting all assets equally: those linked to the dollar are suffering the most.

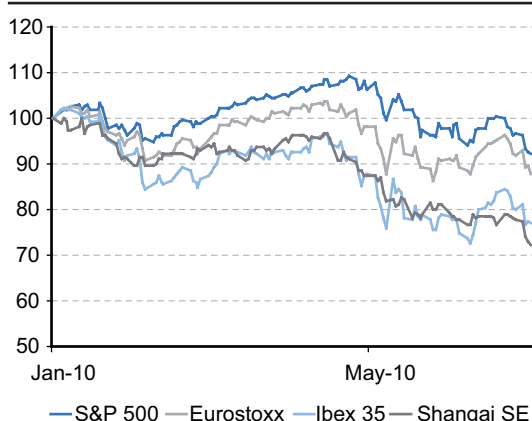
Weaker fundamentals for the USD, slightly stronger for the EUR

During the last few days there has been a slight change in the perception of global and regional risks. On the one hand, macro data in the US and China continue losing gas. On the other, the risk perception in the Euro Zone is decreasing: the unaggressive demand in the ECB's 3M auction has been positive because it reduces the perception of an unstable financial system. This has had a clear impact on exchange rate crosses: i) it has given rise to a certain change in the market positioning (not so aggressively short euros and long dollars). The USD could now be more exposed to US macro data (especially with regard to its crosses with OECD currencies); ii) the JPY and CHF remain the strongest currencies (though there are growing signs that this movement is coming to an end in the short term); iii) in the EURUSD, this situation has allowed for a return to the upper end of the range (EURUSD 1.25), though no further rises are expected; iv) this factor is also weighing on the LatAm currencies which are more closely linked with the USD: the MXN is suffering the most and is already above 13 vs. USD, whereas the BRL is supported by local factors (further monetary tightening) and remains firm at around 1.80.

Cyclical risk will not treat all stock markets equally

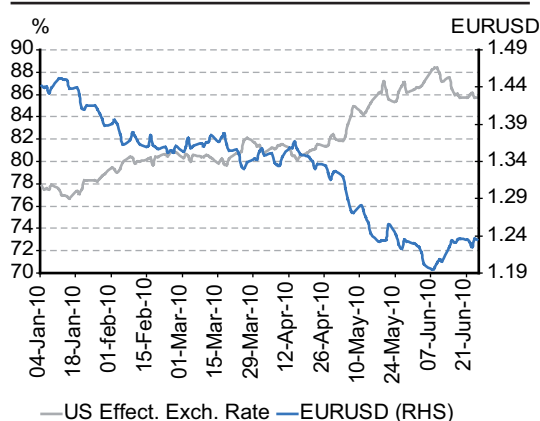
Markets have begun to price in an increase in cyclical risk. The disappointing economic releases have raised uncertainties regarding corporate earnings growth. In our view, cyclical risk will mostly affect the regions whose recent stock market performance has been closely connected with the economic recovery worldwide. In this regard, Chinese equities, down 28% YTD, or the Ibex35, down 23% YTD, have already priced in a cyclical slowdown and therefore should not be hit as hard as the rest of emerging markets or European equities. However, the Spanish market's performance will continue to be driven by banking sector news and sovereign risk, and we expect the Ibex35 relative performance to remain negative medium term.

Chart 3
Performance of main stock market indices



Source: Datastream

Chart 4
EURUSD vs. USD Effective Exchange Rate



Source: Bloomberg

Economics Analysis

Highlights

Financial Scenarios

Daniel Navia

daniel.navia@grupobbva.com
+34 91 537 83 51

Marcos Dal Bianco

marcosjose.dal@grupobbva.com
+34 91 538 63 49

Ignacio González-Panizo

ignacio.gonzalez-panizo@grupobbva.com
+34 91 538 63 50

ECB's liquidity policies and the implication for Eonia

The ECB announced this week the results of the June's 3M LTRO with full allotment. The funds allotted were € 132 bn, with a total number of bidding institutions of 171. The amount is clearly more than what had been given in recent auctions, but is still less than 1/3 of the € 442bn that also expired this week. The implication for EONIA and short-term liquidity conditions in the Euroarea will primarily depend on how much liquidity will remain in the system after this week's maturity. Since the fall in liquidity (around € 170bn) matches the average use of the deposit facility (€ 170bn) since July 2009, this result suggests that almost all the extra-liquidity that was available during the last year will disappear as consequence of this week's maturity. This corroborates our view that the 12-month maturity could press Eonia upwards fairly quickly towards 1%. Nonetheless, as sovereign debt concerns maintain a strong hoarding motive in bank's liquidity policies we do not expect this impact to be immediate.

Decoupling in M&A activity gives support to emerging currencies

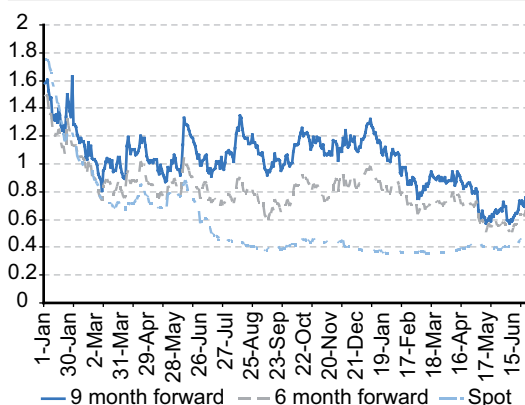
Since the second half of 2009, M&A activity around the world is showing the same decoupling between developed and emerging countries evidenced in other markets. In the last two months, annual accumulated M&A inflows to emerging countries, basically Asia and Latin America, have almost reached the pre-crisis peak, while in developed countries M&A remains at 10-year minimums. Empirical regularities point to M&A flows having a medium term impact on currencies, supporting our view of appreciation pressures for emerging currencies going forward. We expect this diverging pattern of M&A flows to continue in the months to come, as the growth gap between advanced and emerging economies will continue.

Strong credit growth in LatAm points to further monetary tightening

Recent data from Brazil and Peru showed that bank credit is growing at an impressive pace and fuelling strong growth in the whole region. The outstanding loans in Brazil's banking system rose by 2.1% m/m in May. In Peru, last month's data also showed strong credit growth after reaching the highest level since October 2008 (+10% y/y), supported by very favorable economic and financial conditions. This flow of funds is putting additional pressure to domestic central banks for further tightening. In fact, the Brazilian Central Bank has recently announced it will gradually elevate its reserve requirement ratio (RRR) from 42% to 45% in an attempt to curb economic growth and control inflation expectations. The adjustment in RRR and other monetary measures are in line with our view that regional policy makers will try to make use of different tools, but risks would tilt to earlier hikes if surprises in activity and credit continue.

Chart 5

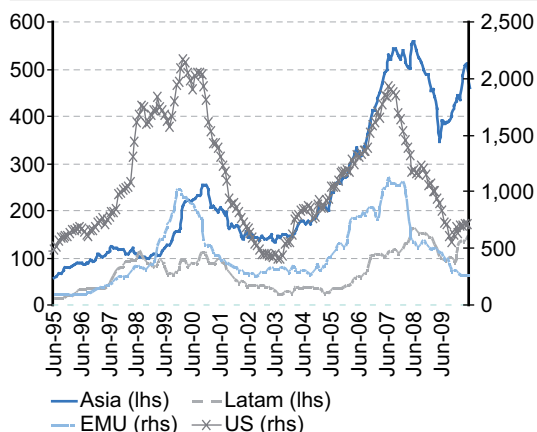
OIS 3 month rates implicit in OIS swaps



Source: Datastream and BBVA Research

Chart 6

M&A inflows to selected areas (annual accumulated, in \$ bn)



Source: Thomson Financial and BBVA Research

Economics Analysis

Europe

Agustín García Serrador
agustin.garcia@grupobbva.com
+34 91 374 7938

US

Kristin Lomicka
kristin.lomicka@bbvacompass.com
+1 713 881 0655

Asia

Stephen Schwartz
stephen.schwartz@bbva.com.hk
+852 2582 3218

Ricard Torne

ricard.torne@bbva.com.hk
+852 2582 3198

Bingje Hu

bingje.hu@bbva.com.hk
+852 2582 3117

Mexico

Julian Cubero
juan.cubero@bbva.bancomer.com
+52 5556214143

Calendar: Indicators

USA: Consumer Credit (April, July 8th)

Forecast: **-\$1.9bn**Consensus: **-\$2.0bn**Previous: **\$1.0bn**

Comment: Consumer credit outstanding is expected to have declined further in April, yet the overall pace should slow. **Market Impact:** This is a lagged indicator that does not have a large market impact. Nevertheless, a negative surprise in this front could indicate that the pace of recovery of consumer spending will be limited by lack of the use of credit.

USA: ISM Non-Manufacturing Index (June, July 6th)

Forecasts: **55.4**Consensus: **55.4**Previous: **55.4**

Comment: Non-manufacturing economic activity will expand for the fifth consecutive month in June, but at the same speed as the prior three months. While expansion is a good sign for employment, the stagnant pace supports our expectation of a slow labor market recovery. **Market Impact:** A negative surprise could indicate that the economy is losing some steam, which would limit the speed of job growth even further.

Germany: Exports (May, July 8th)

Forecasts: **3.1% m/m**Consensus: **4.0% m/m**Previous: **-6.3% m/m**

Comment: After the sharp fall in April, German exports are expected to rise again in May, as assessments of exports order books from EC survey continued to improve in May and June. **Market Impact:** A negative surprise could be very damaging as exports are the main driver of the economic recovery.

Eurozone: Retail sales (May, July 5th)

Forecast: **0.7% m/m**Consensus: **0.5% m/m**Previous: **-1.5% m/m**

Comment: Retail sales are expected to increase slightly in May, but below Q1 figures when private consumption remained virtually stalled. In this regard, May's figures are in line with our view that the rebound of activity expected for Q2 will be supported by net exports instead of consumption. **Market Impact:** A negative surprise could be interpreted as another sign of weakness and fragility that could be very damaging for global markets.

Mexico: CPI (June, July 8th)

Forecast: **0.0% m/m**Consensus: **0.1%**Previous: **-0.6%**

Comment: June should register the first "non-decrease" in CPI after two months of falls, pushed by non-core and processed food items. All in all, the inflation rate is expected to slow from 3.9% to 3.7%. **Market Impact:** Negative surprises in inflation have been one of the drivers behind the evolution of the yield curve over the last two months. Our scenario foresees an upward trend on inflation across H210. An early positive surprise, however, could have an upward impact in the yield curve, particularly if global factors are biased to risk aversion.

China: Export growth (June, July 10th)

Forecast: **31.0%**Consensus: **37.0%**Previous: **48.5%**

Comment: After May's surprisingly high outturn, we expect exports to slow in June, on weaker external demand and the recent removal of the export tax rebate. **Market Impact:** Following the lower-than-expected PMI reading for June, underpinned by a weaker export orders subcomponent, a sluggish export outturn could intensify concerns of a sharp slowdown in China. This would also further reduce expectations of the magnitude of currency appreciation.

Table 1

Market data

		Close	Weekly change	Monthly change	Annual change	
Interest rates (changes in bps)	US	3-month Libor rate	0.53	0	-3	
		2-yr yield	0.63	-2	-35	
		10-yr yield	2.96	-15	-54	
	EMU	3-month Euribor rate	0.79	4	-27	
		2-yr yield	0.67	10	-57	
		10-yr yield	2.59	-2	-75	
Exchange rates (changes in %)	Europe	Dollar-Euro	1.259	2.0	3.4	-10.0
		Pound-Euro	0.83	0.7	-0.5	-3.2
		Swiss Franc-Euro	1.34	-0.9	-4.9	-11.8
	America	Argentina (peso-dollar)	3.93	0.1	0.3	3.5
		Brazil (real-dollar)	1.78	0.1	-2.2	-8.8
		Colombia (peso-dollar)	1896	-0.2	-3.4	-9.3
		Chile (peso-dollar)	539	0.3	0.4	-0.1
		Mexico (peso-dollar)	13.07	3.0	2.0	-1.4
	Asia	Peru (Nuevo sol-dollar)	2.82	-0.1	-0.8	-6.4
		Japan (Yen-Dollar)	87.70	-1.8	-5.0	-8.6
		Korea (KRW-Dollar)	1226.31	1.4	0.9	-3.4
		Australia (AUD-Dollar)	0.846	-2.8	0.9	6.2
Comm. (chg %)		Brent oil (\$/b)	72.3	-7.5	-4.2	10.2
		Gold (\$/ounce)	1201.8	-4.3	-0.4	28.9
		Base metals	473.4	-1.9	0.0	16.4
Stock markets (changes in %)	Euro	Ibex 35	9408	-1.3	1.4	-3.1
		EuroStoxx 50	2551	-3.0	-3.2	7.3
	America	USA (S&P 500)	1026	-4.7	-6.9	14.5
		Argentina (Merval)	2209	-4.7	-1.3	39.9
		Brazil (Bovespa)	61127	-5.7	-2.9	20.0
		Colombia (IGBC)	12389	-1.1	0.5	24.1
		Chile (IGPA)	18739	-1.7	3.2	26.1
		Mexico (CPI)	31355	-3.8	0.1	30.4
		Peru (General Lima)	13866	-2.3	-1.9	7.5
		Venezuela (IBC)	65176	0.1	3.0	46.0
	Asia	Nikkei225	9204	-5.5	-7.2	-6.2
		HSI	19905	-3.8	0.6	9.3
	Credit (changes in bps)	Ind.	Itraxx Main	131	4	11
Itraxx Xover			585	36	26	-153
Sovereign risk		CDS Germany	44	-1	1	11
		CDS Portugal	306	-18	-25	239
		CDS Spain	262	12	9	181
		CDS USA	37	-1	-2	---
		CDS Emerging	276	20	3	-113
		CDS Argentina	1002	36	-124	-998
		CDS Brazil	142	11	8	-36
		CDS Colombia	152	3	-6	-54
		CDS Chile	105	6	5	-25
		CDS Mexico	139	11	8	-69
		CDS Peru	138	10	5	-44

Sources: Bloomberg, Datastream and JP Morgan

DISCLAIMER

This document and the information, opinions, estimates and recommendations expressed herein, have been prepared by Banco Bilbao Vizcaya Argentaria, S.A. (hereinafter called "BBVA") to provide its customers with general information regarding the date of issue of the report and are subject to changes without prior notice. BBVA is not liable for giving notice of such changes or for updating the contents hereof.

This document and its contents do not constitute an offer, invitation or solicitation to purchase or subscribe to any securities or other instruments, or to undertake or divest investments. Neither shall this document nor its contents form the basis of any contract, commitment or decision of any kind.

Investors who have access to this document should be aware that the securities, instruments or investments to which it refers may not be appropriate for them due to their specific investment goals, financial positions or risk profiles, as these have not been taken into account to prepare this report. Therefore, investors should make their own investment decisions considering the said circumstances and obtaining such specialized advice as may be necessary. The contents of this document is based upon information available to the public that has been obtained from sources considered to be reliable. However, such information has not been independently verified by BBVA and therefore no warranty, either express or implicit, is given regarding its accuracy, integrity or correctness. BBVA accepts no liability of any type for any direct or indirect losses arising from the use of the document or its contents. Investors should note that the past performance of securities or instruments or the historical results of investments do not guarantee future performance.

The market prices of securities or instruments or the results of investments could fluctuate against the interests of investors. Investors should be aware that they could even face a loss of their investment. Transactions in futures, options and securities or high-yield securities can involve high risks and are not appropriate for every investor. Indeed, in the case of some investments, the potential losses may exceed the amount of initial investment and, in such circumstances, investors may be required to pay more money to support those losses. Thus, before undertaking any transaction with these instruments, investors should be aware of their operation, as well as the rights, liabilities and risks implied by the same and the underlying stocks. Investors should also be aware that secondary markets for the said instruments may be limited or even not exist.

BBVA or any of its affiliates, as well as their respective executives and employees, may have a position in any of the securities or instruments referred to, directly or indirectly, in this document, or in any other related thereto; they may trade for their own account or for third-party account in those securities, provide consulting or other services to the issuer of the aforementioned securities or instruments or to companies related thereto or to their shareholders, executives or employees, or may have interests or perform transactions in those securities or instruments or related investments before or after the publication of this report, to the extent permitted by the applicable law.

BBVA or any of its affiliates' salespeople, traders, and other professionals may provide oral or written market commentary or trading strategies to its clients that reflect opinions that are contrary to the opinions expressed herein. Furthermore, BBVA or any of its affiliates' proprietary trading and investing businesses may make investment decisions that are inconsistent with the recommendations expressed herein. No part of this document may be (i) copied, photocopied or duplicated by any other form or means (ii) redistributed or (iii) quoted, without the prior written consent of BBVA. No part of this report may be copied, conveyed, distributed or furnished to any person or entity in any country (or persons or entities in the same) in which its distribution is prohibited by law. Failure to comply with these restrictions may breach the laws of the relevant jurisdiction.

This document is provided in the United Kingdom solely to those persons to whom it may be addressed according to the Financial Services and Markets Act 2000 (Financial Promotion) Order 2001 and it is not to be directly or indirectly delivered to or distributed among any other type of persons or entities. In particular, this document is only aimed at and can be delivered to the following persons or entities (i) those outside the United Kingdom (ii) those with expertise regarding investments as mentioned under Section 19(5) of Order 2001, (iii) high net worth entities and any other person or entity under Section 49(1) of Order 2001 to whom the contents hereof can be legally revealed.

The remuneration system concerning the analyst/s author/s of this report is based on multiple criteria, including the revenues obtained by BBVA and, indirectly, the results of BBVA Group in the fiscal year, which, in turn, include the results generated by the investment banking business; nevertheless, they do not receive any remuneration based on revenues from any specific transaction in investment banking.

BBVA and the rest of entities in the BBVA Group which are not members of the New York Stock Exchange or the National Association of Securities Dealers, Inc., are not subject to the rules of disclosure affecting such members.

"BBVA is subject to the BBVA Group Code of Conduct for Security Market Operations which, among other regulations, includes rules to prevent and avoid conflicts of interests with the ratings given, including information barriers. The BBVA Group Code of Conduct for Security Market Operations is available for reference at the following web site: www.bbva.com / Corporate Governance".